


**GLENBROOK HIGH SCHOOLS**  
**Office of the Superintendent**  
**Glenview - Northbrook, Illinois**

To: Board of Education

From: Mike Riggle 

Re: Graduate Follow-Up Study

Date: December 9, 2009

During a number of occasions over the last several years, the board and administration have indicated the need for conducting a follow-up study of Glenbrook graduates to provide insight to the strength of their academic preparation for college and university work and their overall success after leaving our high schools. In the District 225 Comprehensive Planning Process document presented to the board on February 13, 2006, the need for tracking and surveying our graduates was documented as part of Objectives I and V. In addition, a graduate follow-up study has been clearly identified as an integral part of a plan for school improvement efforts required in No Child Left Behind.

To properly conduct a graduate follow-up study, a longitudinal tracking component is required, as well as a formal survey of graduates to assess their perceptions regarding academic preparation and other identified elements of the Glenbrook curriculum and programs including the college counseling program conducted by each school. To accomplish the longitudinal tracking of Glenbrook graduates, we are completing arrangements with the National Student Clearinghouse who can provide us with extensive data on Glenbrook graduates for the last six years for the nominal fee of \$425 per school. There is no other similar service that can provide comparable data. Materials from the National Student Clearinghouse is attached for your review.

The surveying of graduate perceptions, however, is much more difficult and time-consuming if conducted properly. It also requires a level of statistical expertise in constructing and implementing the survey to ensure valid assessments and proper analysis. We do not have adequate staffing or expertise at this time to conduct this portion of a graduate study in-house.

There are a number of agencies in the Chicago area who would be interested in conducting a graduate study of this type. We will need to clearly articulate our objectives for the study and identify the essential questions our district wishes to have answered by the collection of such data. It is the intent of the district and building administrations to pursue competitive bids from area agencies who are capable of working with the district to construct, administer and analyze a survey of recent graduates to be used as a complement to the longitudinal data obtained from the National Student Clearinghouse. As soon as comparable pricing from eligible firms has been received, it will be presented to the board for consideration and possible approval.

<b>USER LOGIN</b>	
User Name	
Password <span style="float: right;">▶</span>	

[High Schools](#)    
 [FTP Login](#)    
 [About Us](#)    
 [Contact Us](#)    
 [Home](#)

## Measure the College Success of Your High School Graduates

StudentTracker for High Schools is a unique program designed to help high school districts more accurately gauge the college success of their graduates by answering such key questions as:

- ▶ Where do my high school graduates enroll in college?
- ▶ How long do their educational efforts persist?
- ▶ Do they transfer between colleges?
- ▶ Do they graduate from college?
- ▶ What degrees do they earn?
- ▶ What courses of study do they pursue?

[Sign Up for StudentTracker for High Schools & Get FREE Electronic Transcript Exchange!](#)

## Track Postsecondary Enrollment Anywhere in the US

StudentTracker enables administrators at high school districts to access the Clearinghouse's records on over 100 million students, which represent postsecondary enrollments and achievements nationwide. We maintain these records on behalf of the more than 3,300 [colleges and universities](#) that enroll 17 million students — 92% of total U.S. enrollment in higher education. These institutions have authorized the Clearinghouse to provide this information to high schools and high school districts in order to help them improve their educational programs.

Learning the educational outcomes of your former students will help you better assess the performance of your district's programs to prepare your students for higher education. Through StudentTracker, you can obtain this data more quickly, easily, inexpensively and comprehensively than ever before.

## How to Participate in StudentTracker for High Schools

Participating in StudentTracker for High Schools can help you better prepare your high school students for college. If you would like to participate or learn more, contact us at **703-742-4200** or [service@studentclearinghouse.org](mailto:service@studentclearinghouse.org).

For information and documentation on implementing StudentTracker for High Schools, [click here](#).

### Resource Center

- [StudentTracker for High Schools Agreement](#)
- [Credit Card Authorization Form](#)
- [Participating School Districts](#)
- [Clearinghouse Colleges](#)
- [Implementation Guide](#)
- [Excel Guide](#)
- [Secure FTP Access FAQs](#)
- [Sample Report Flyer](#)
- [FERPA Compliance Research Services Web Site](#)
- [Contact Us](#)

**Are you a student or alumni? Visit our student section.**



Copyright (c) 2009  
 by National Student Clearinghouse. All Rights Reserved  
[Terms of Use](#) | [Privacy Policy](#) | [Site Map](#) | [Problems Using This Web Site?](#)  
[web-master@studentclearinghouse.org](mailto:web-master@studentclearinghouse.org)



# NATIONAL STUDENT CLEARINGHOUSE<sup>®</sup>

StudentTracker for High Schools

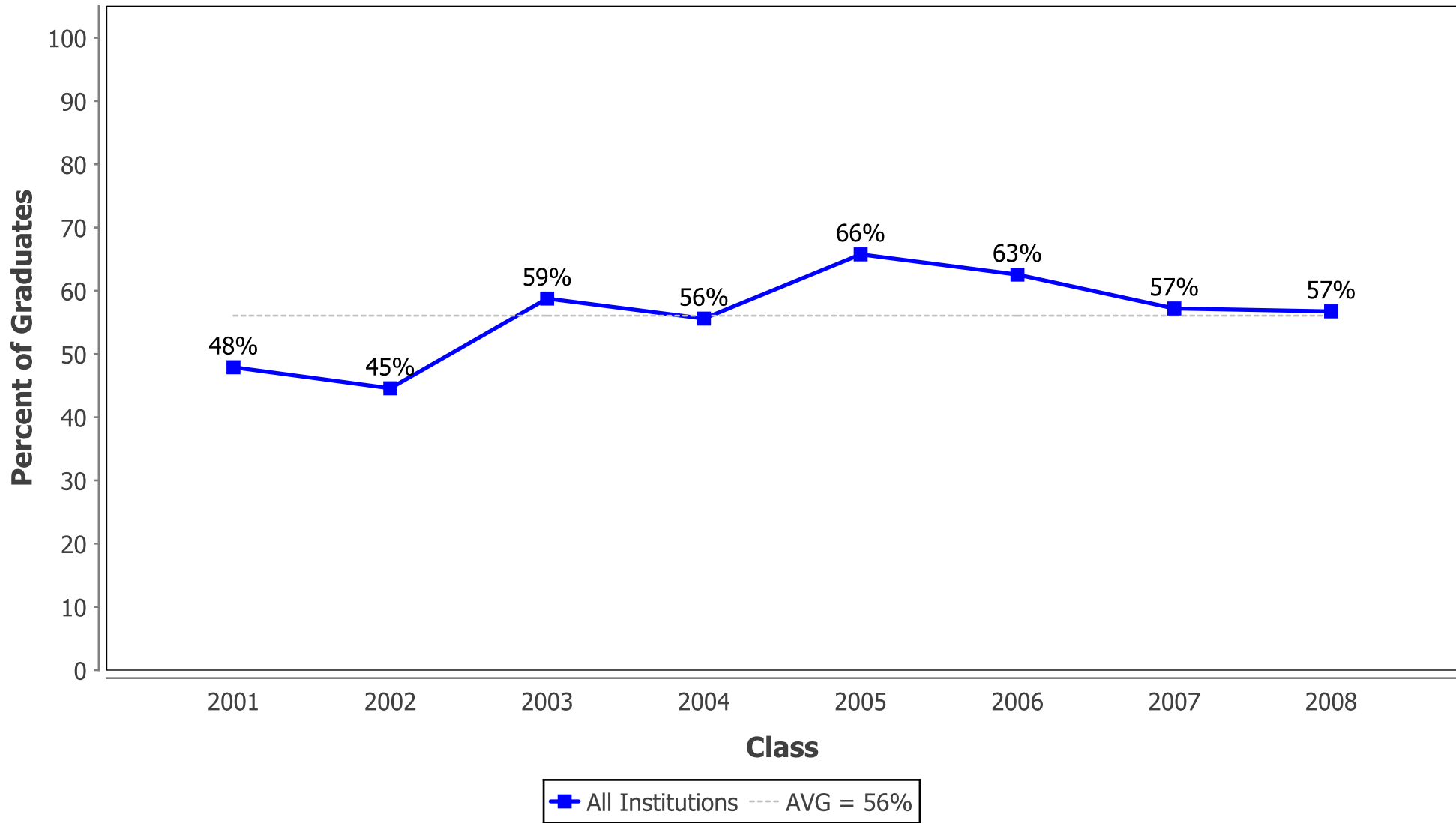
Aggregate Report

Prepared for  
USA HIGH SCHOOL

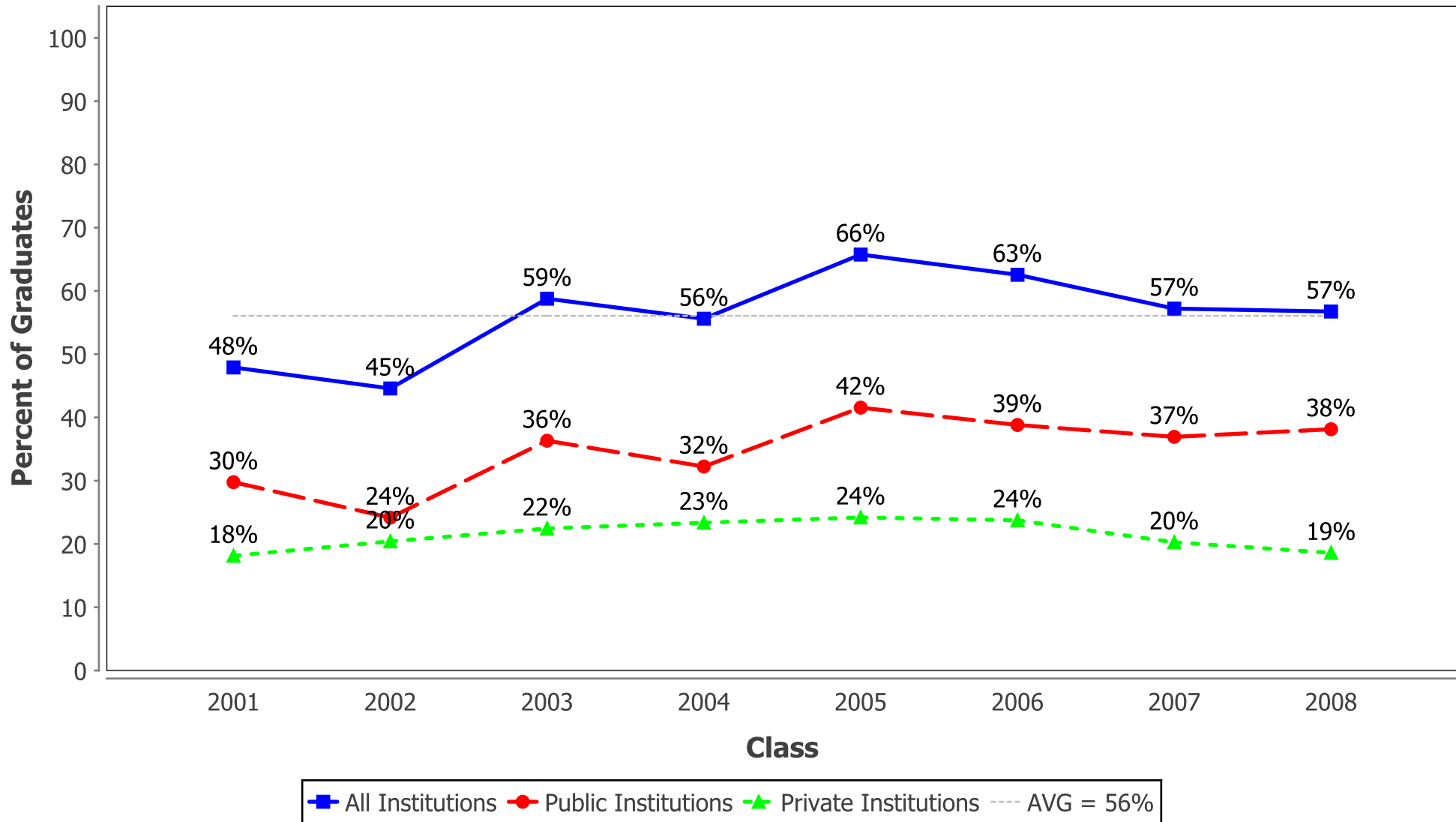
NATIONAL STUDENT  
CLEARINGHOUSE<sup>®</sup>

(c) 2009 National Student Clearinghouse. All rights reserved.

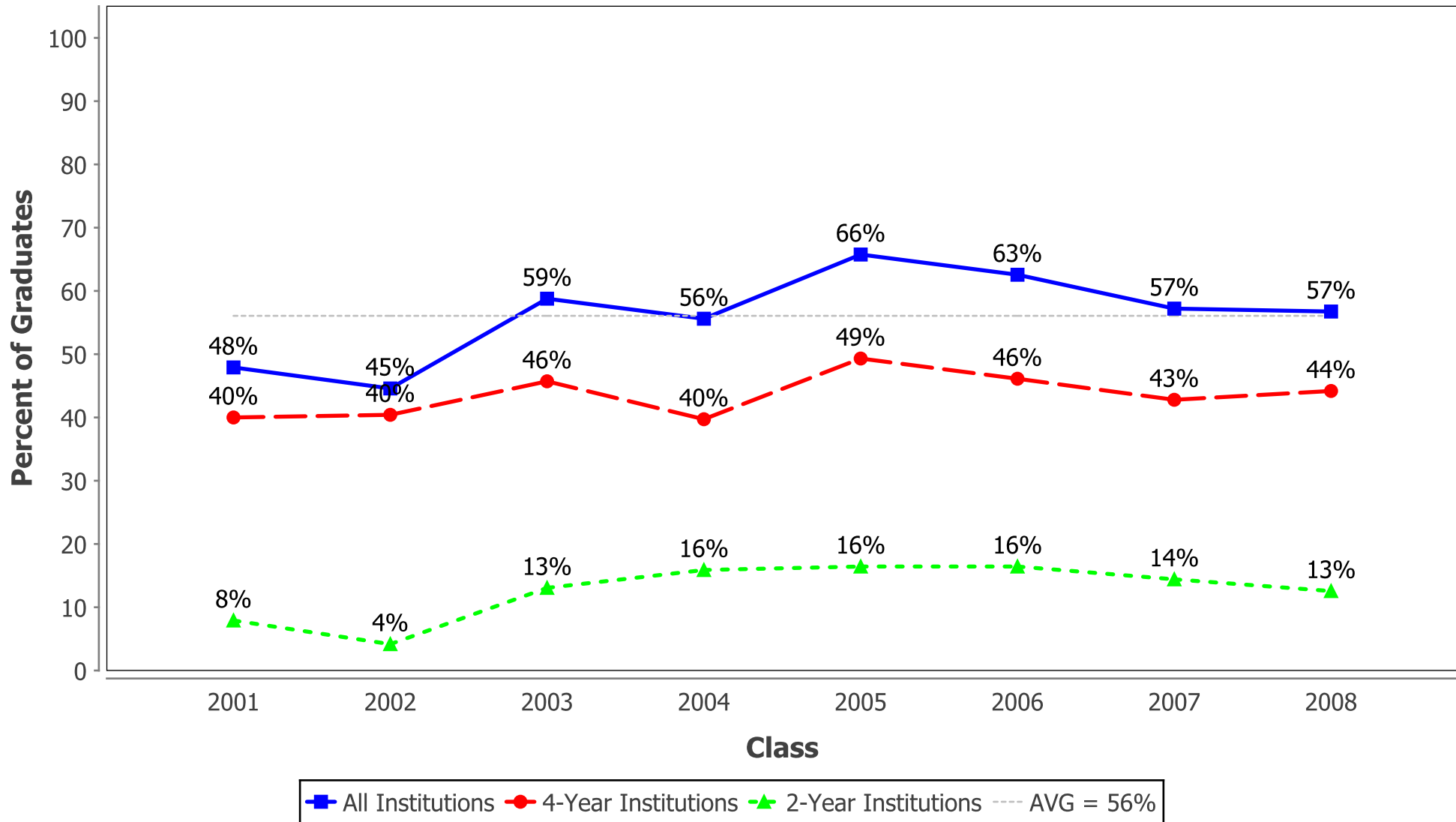
# Percent of Students Enrolled in College the Fall Immediately Following Graduation From High School



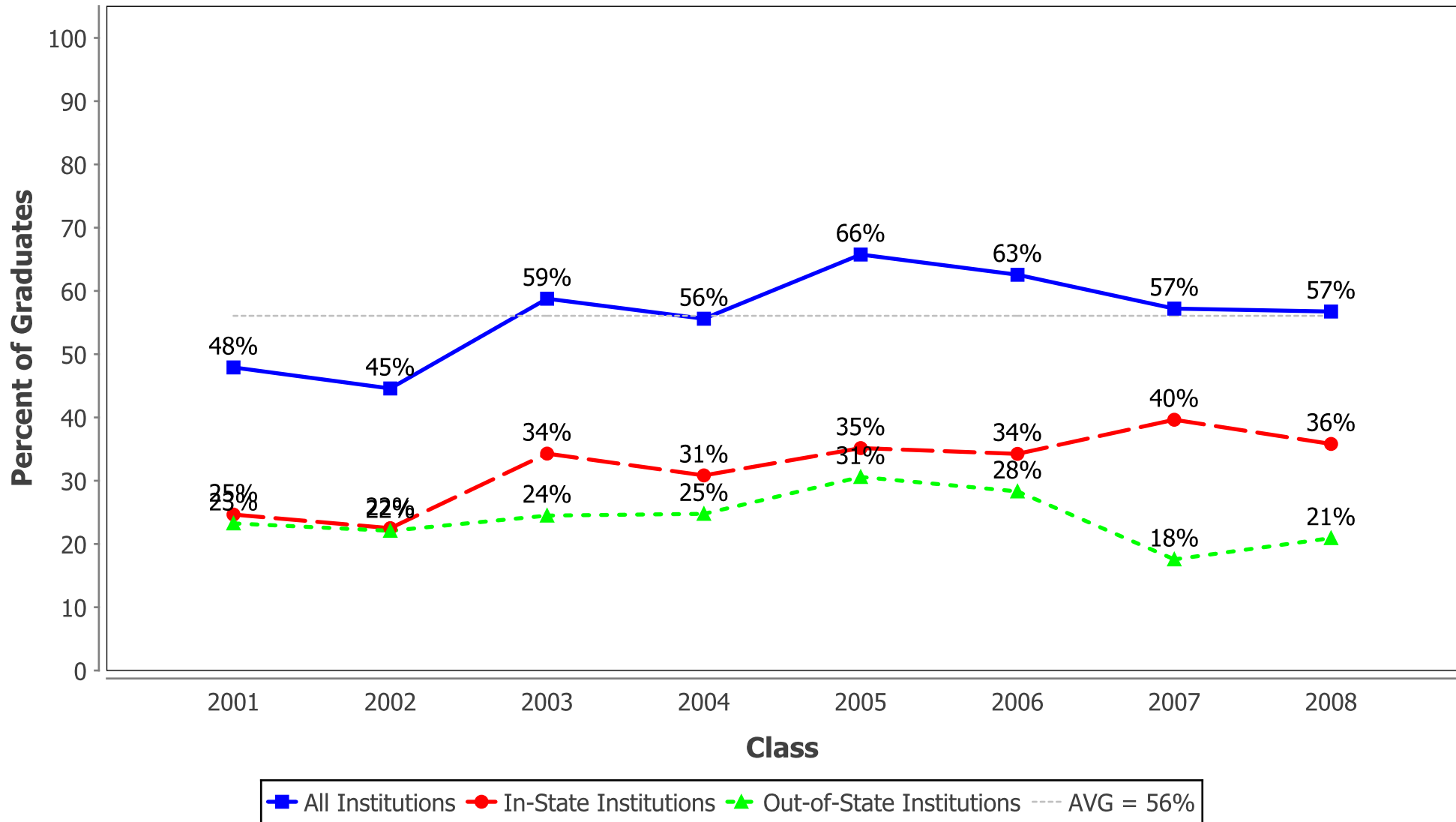
# Percent of Students Enrolled in College the Fall Immediately Following Graduation From High School by Institutional Type



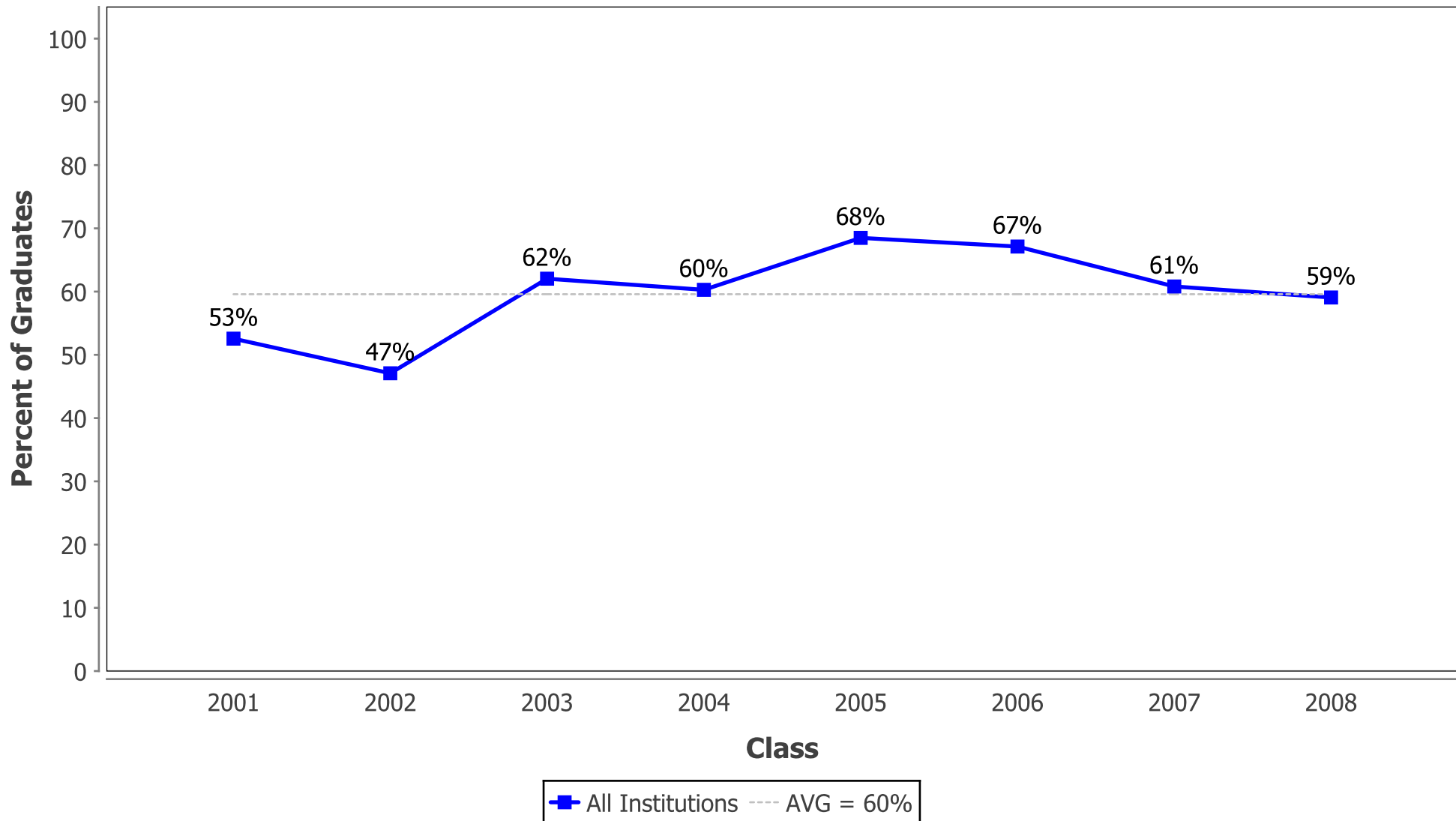
# Percent of Students Enrolled in College the Fall Immediately Following Graduation From High School by Institutional Level



# Percent of Students Enrolled in College the Fall Immediately Following Graduation From High School by Institutional Location

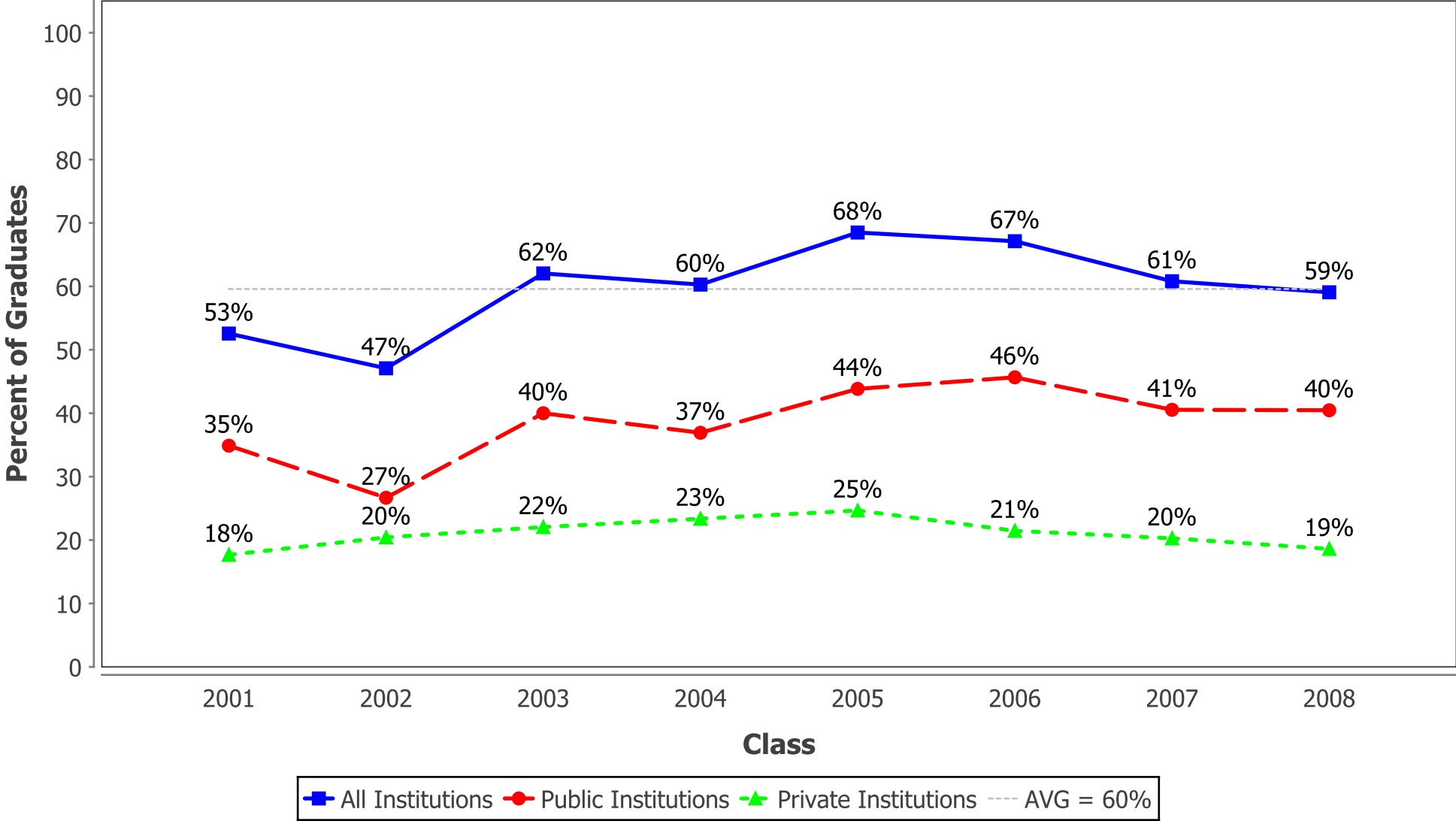


# Percent of Students Enrolled in College at Any Time During the First Year After High School

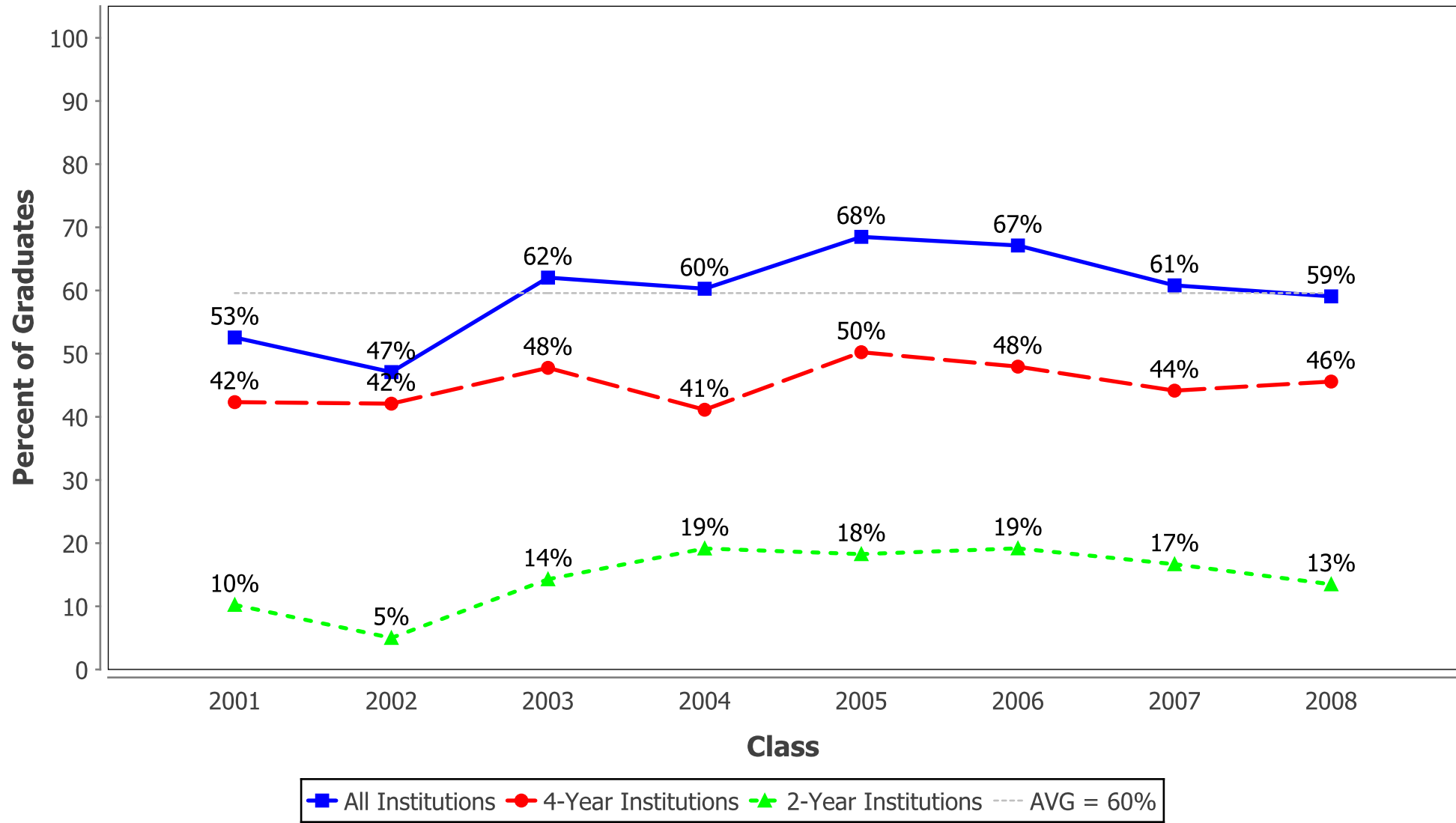




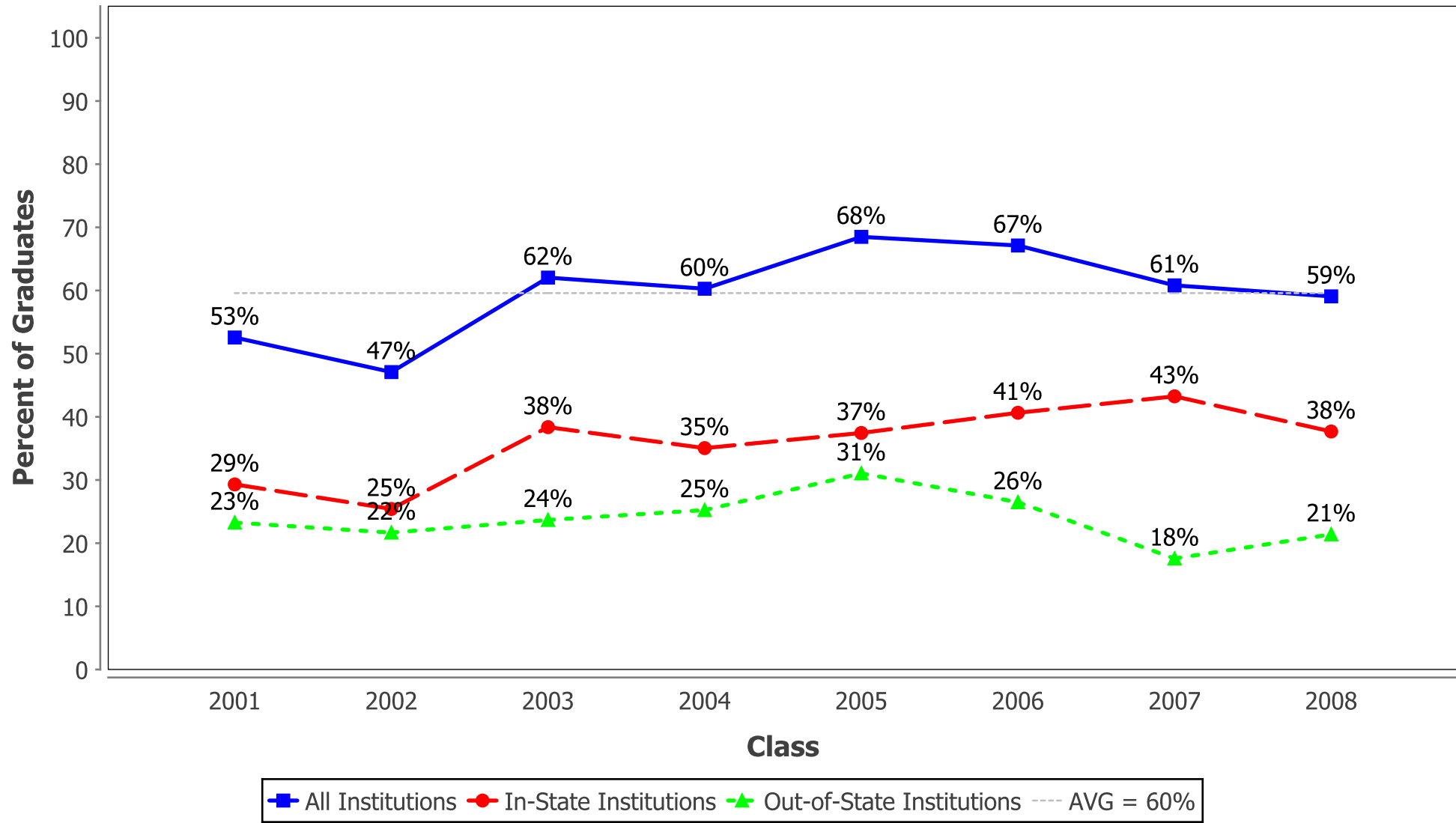
# Percent of Students Enrolled in College at Any Time During the First Year After High School by Institutional Type



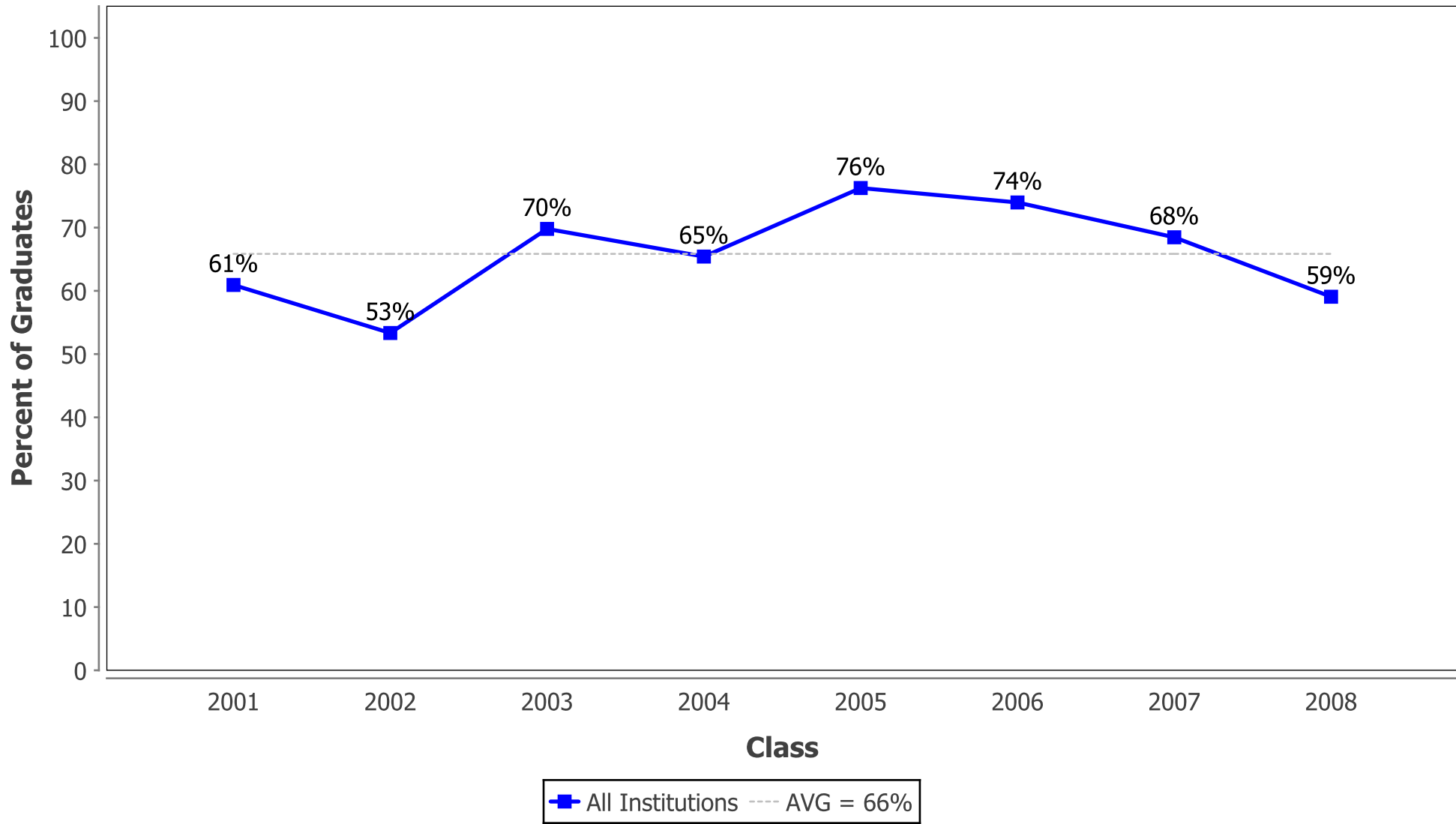
# Percent of Students Enrolled in College at Any Time During the First Year After High School by Institutional Level



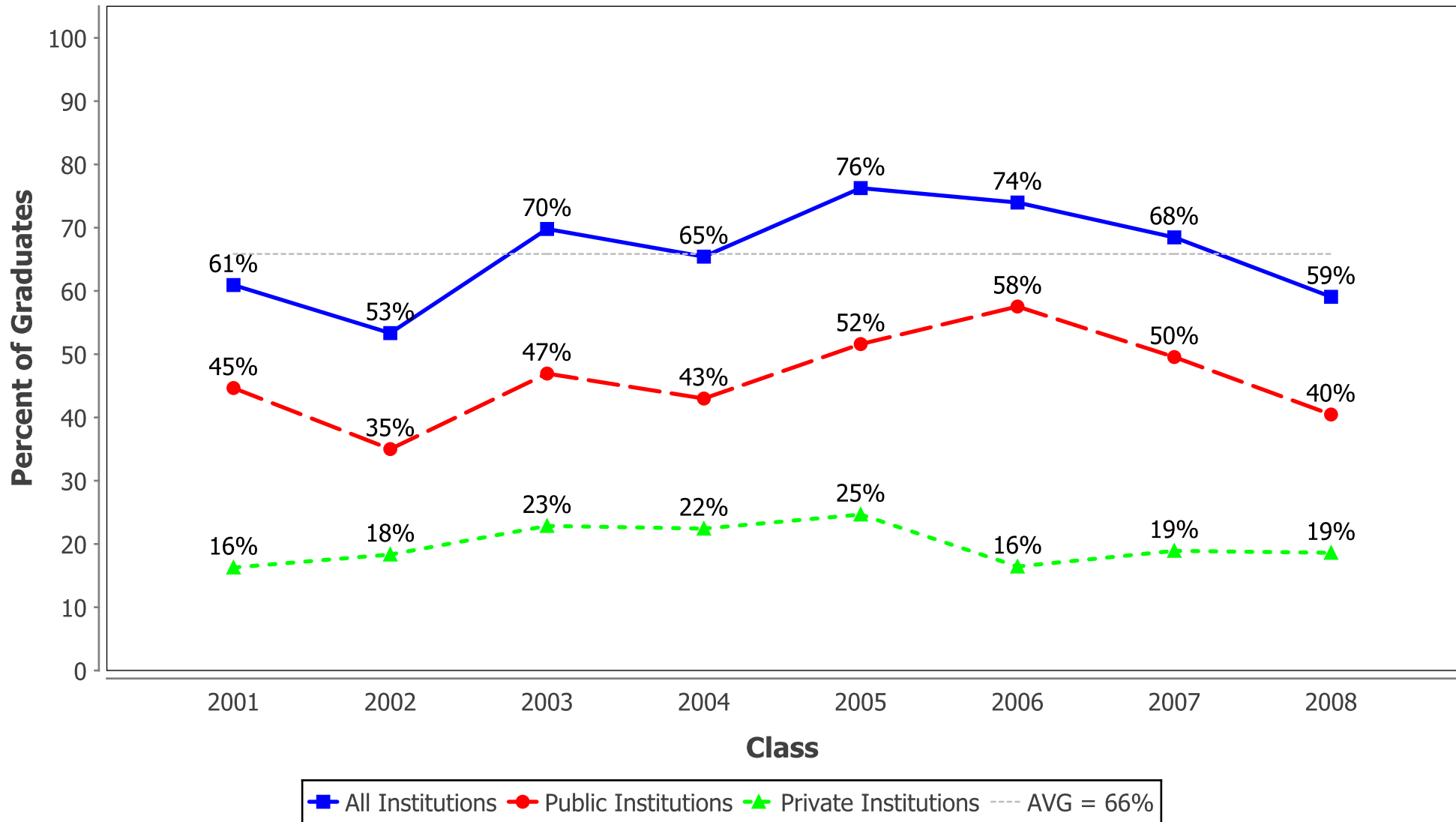
# Percent of Students Enrolled in College at Any Time During the First Year After High School by Institutional Location



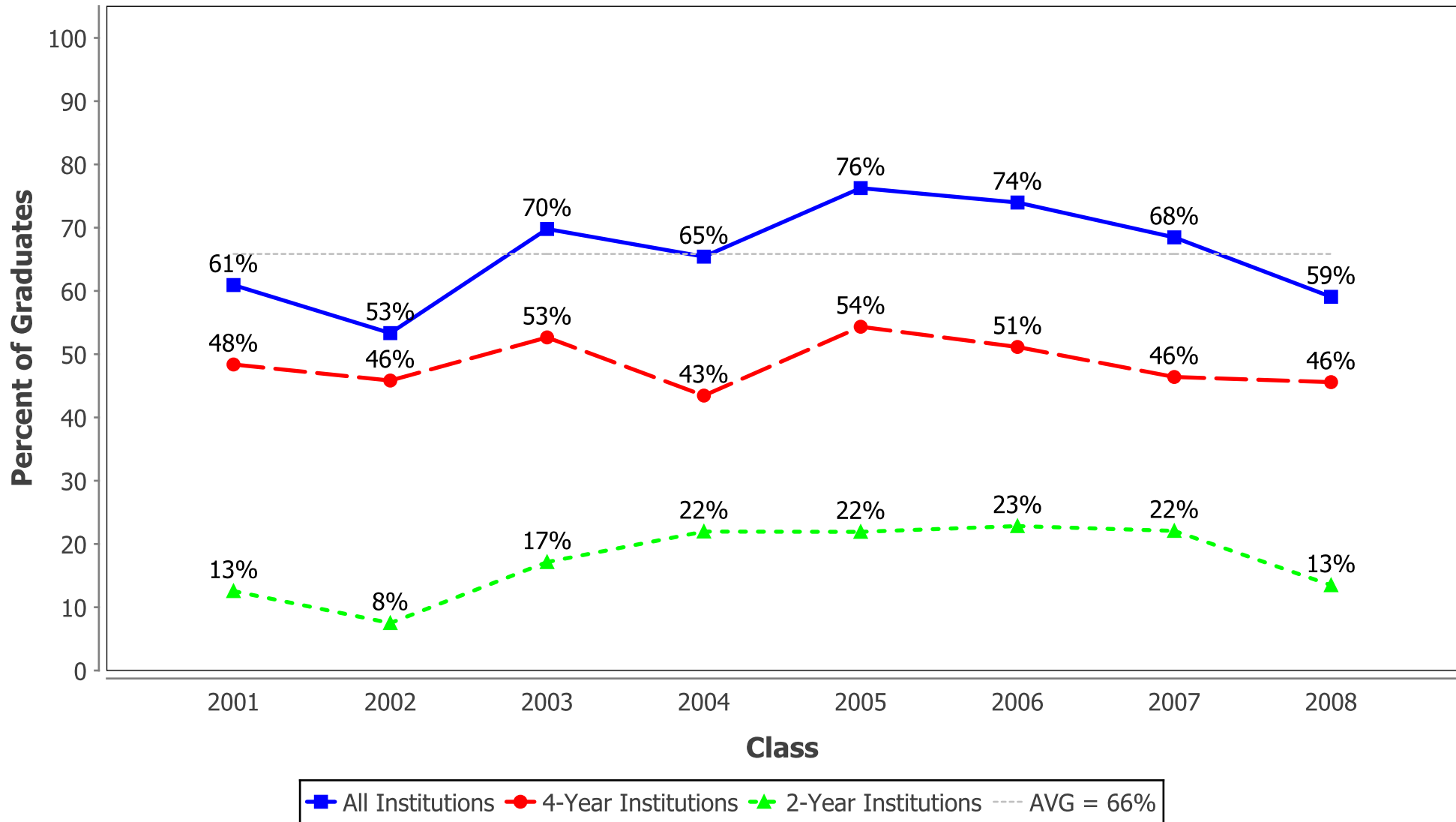
# Percent of Students Enrolled in College at Any Time During the First Two Years After High School



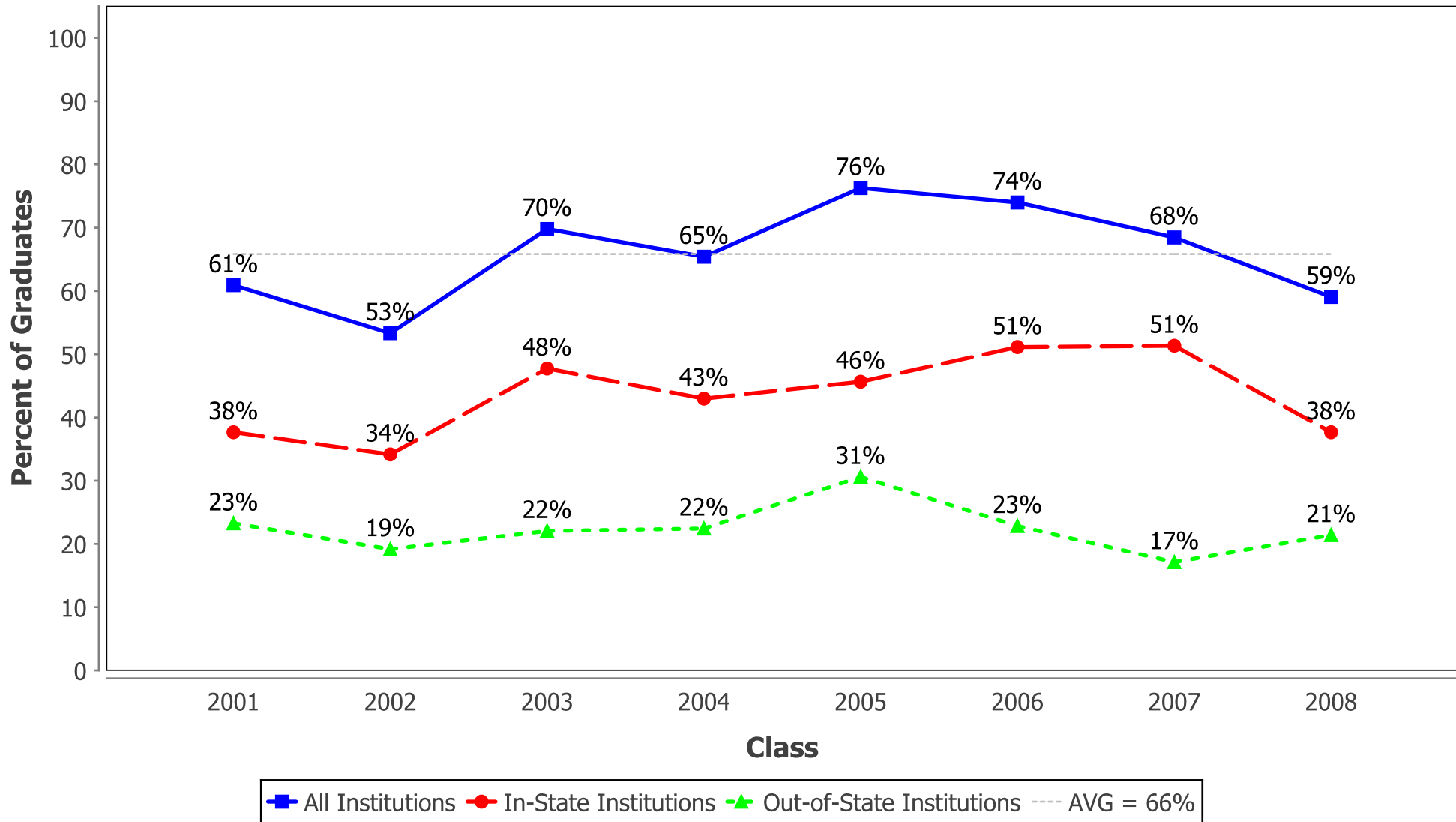
# Percent of Students Enrolled in College at Any Time During the First Two Years After High School by Institutional Type



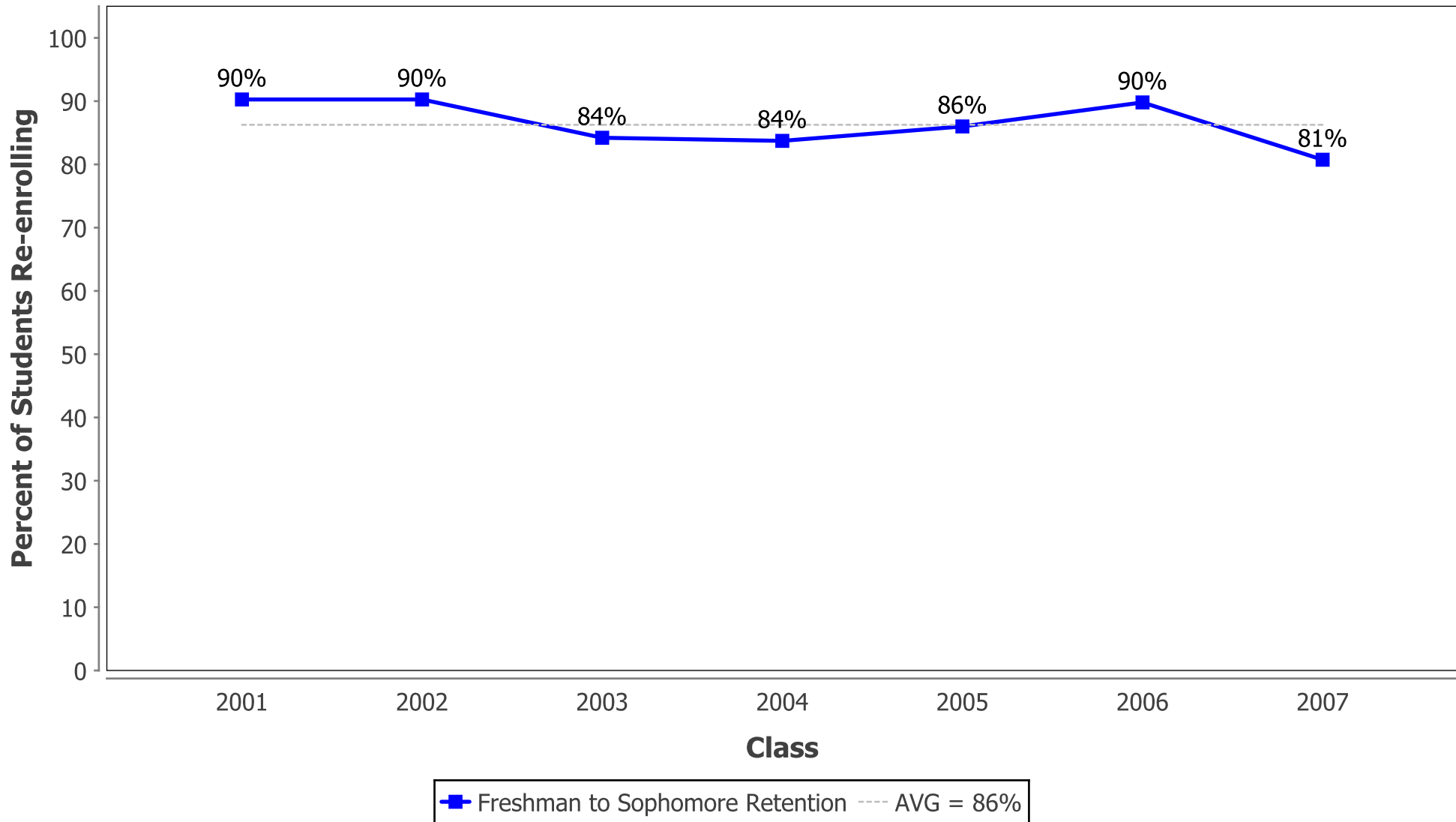
# Percent of Students Enrolled in College at Any Time During the First Two Years After High School by Institutional Level



# Percent of Students Enrolled in College at Any Time During the First Two Years After High School by Institutional Location

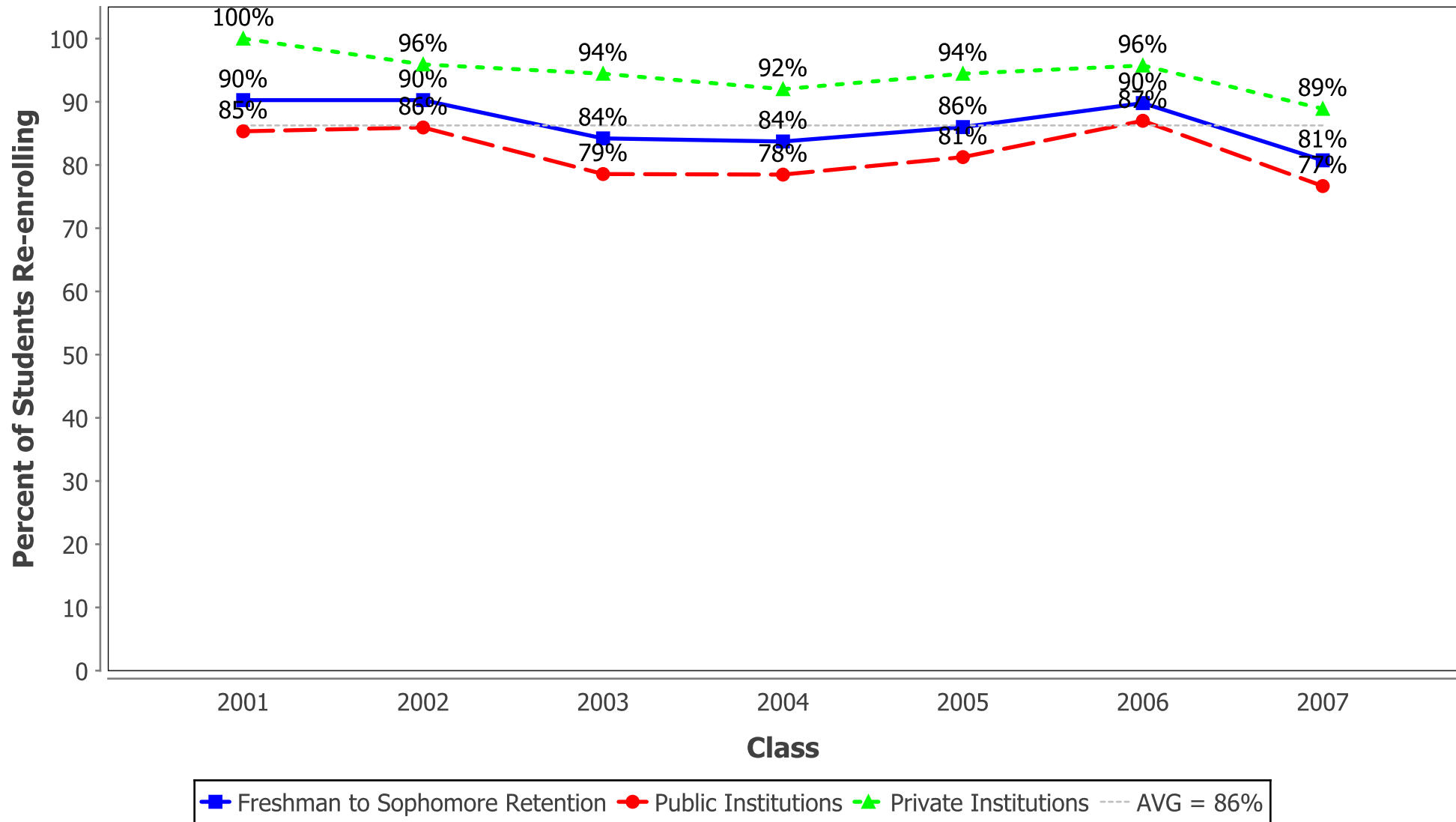


# Percent of Students Enrolled in College the First Year After High School Who Returned for a Second Year (Freshman to Sophomore Retention)

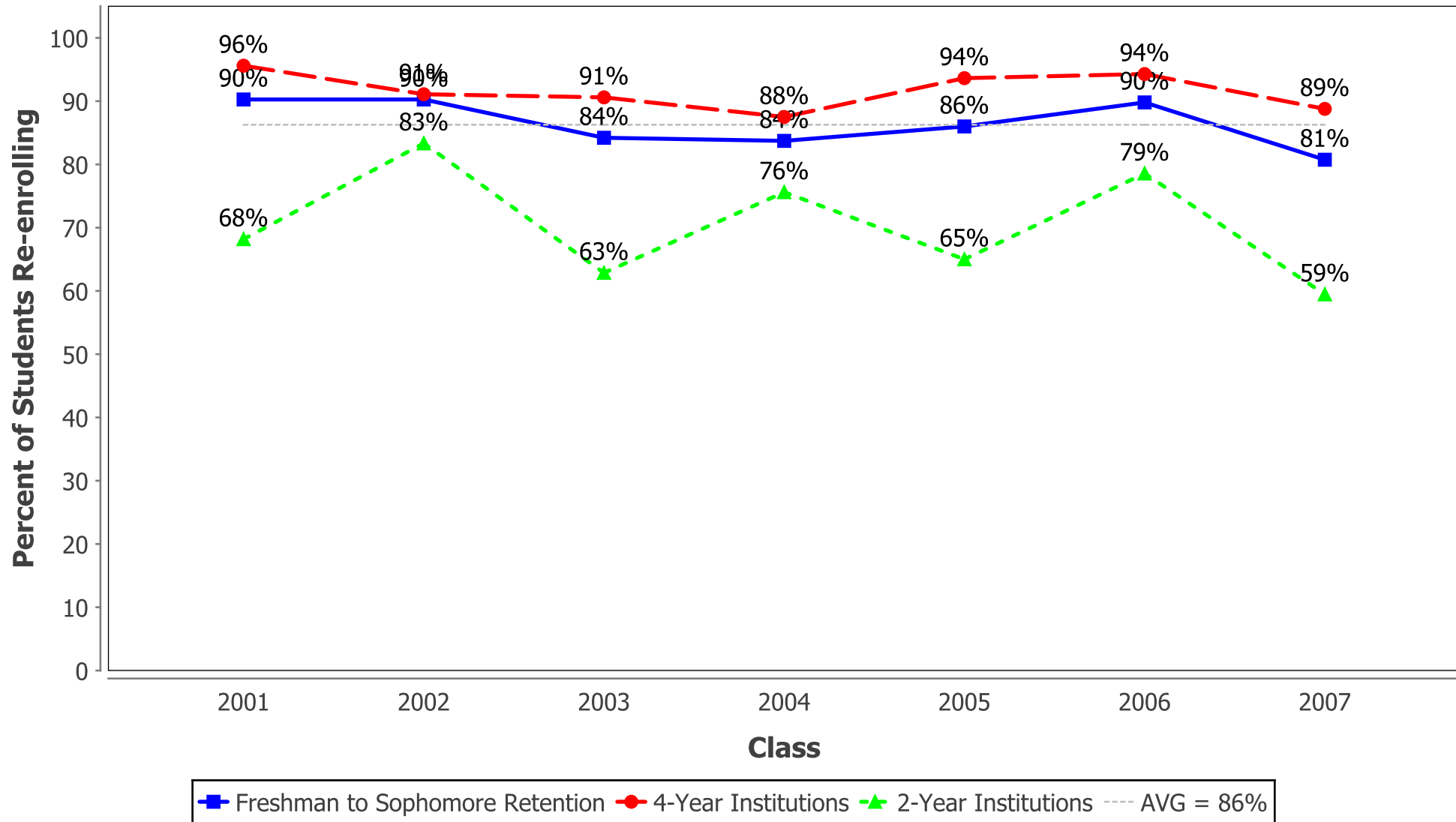




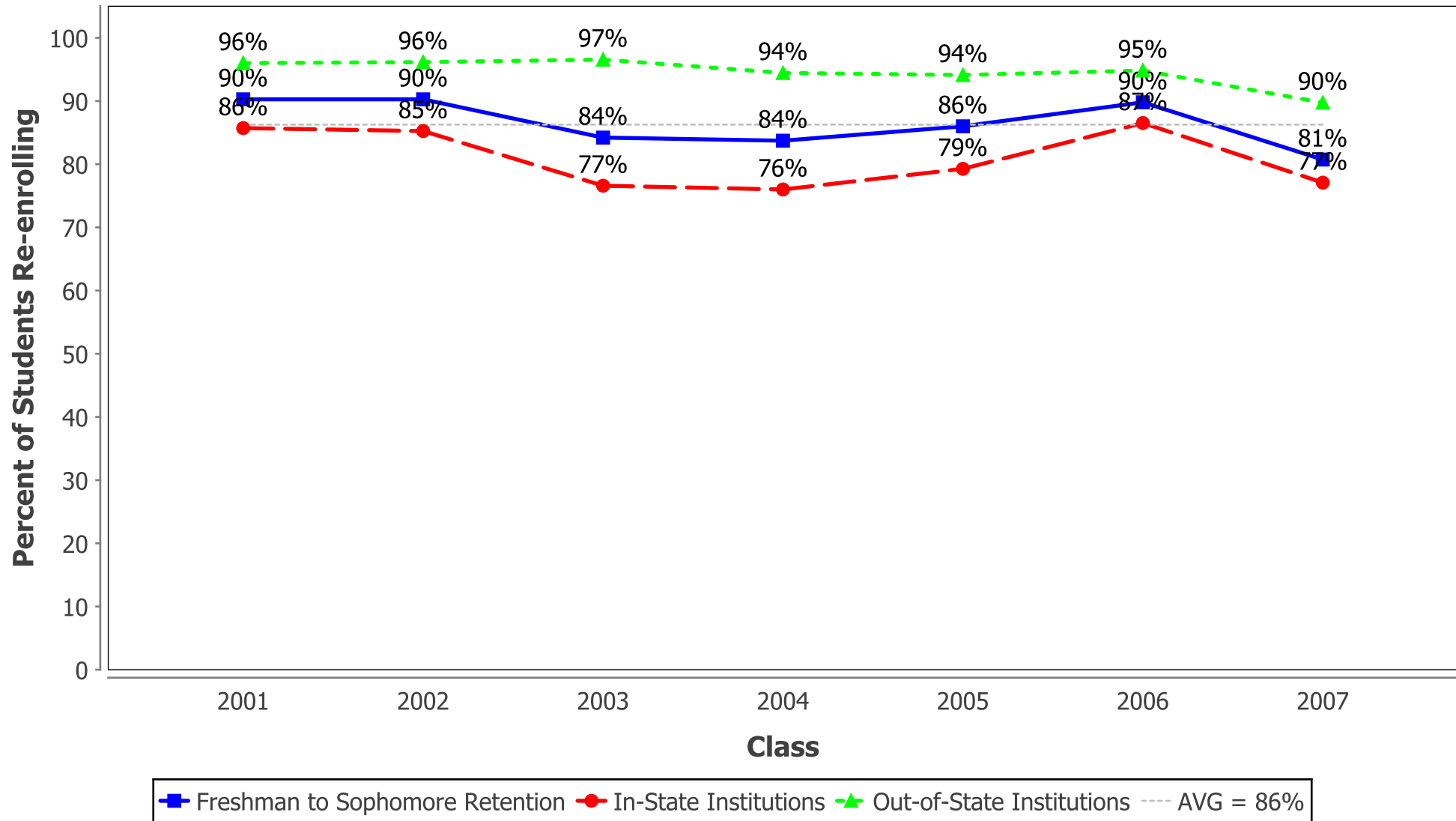
## Percent of Students Enrolled in College the First Year After High School Who Returned for a Second Year (Freshman to Sophomore Retention) by Institutional Type



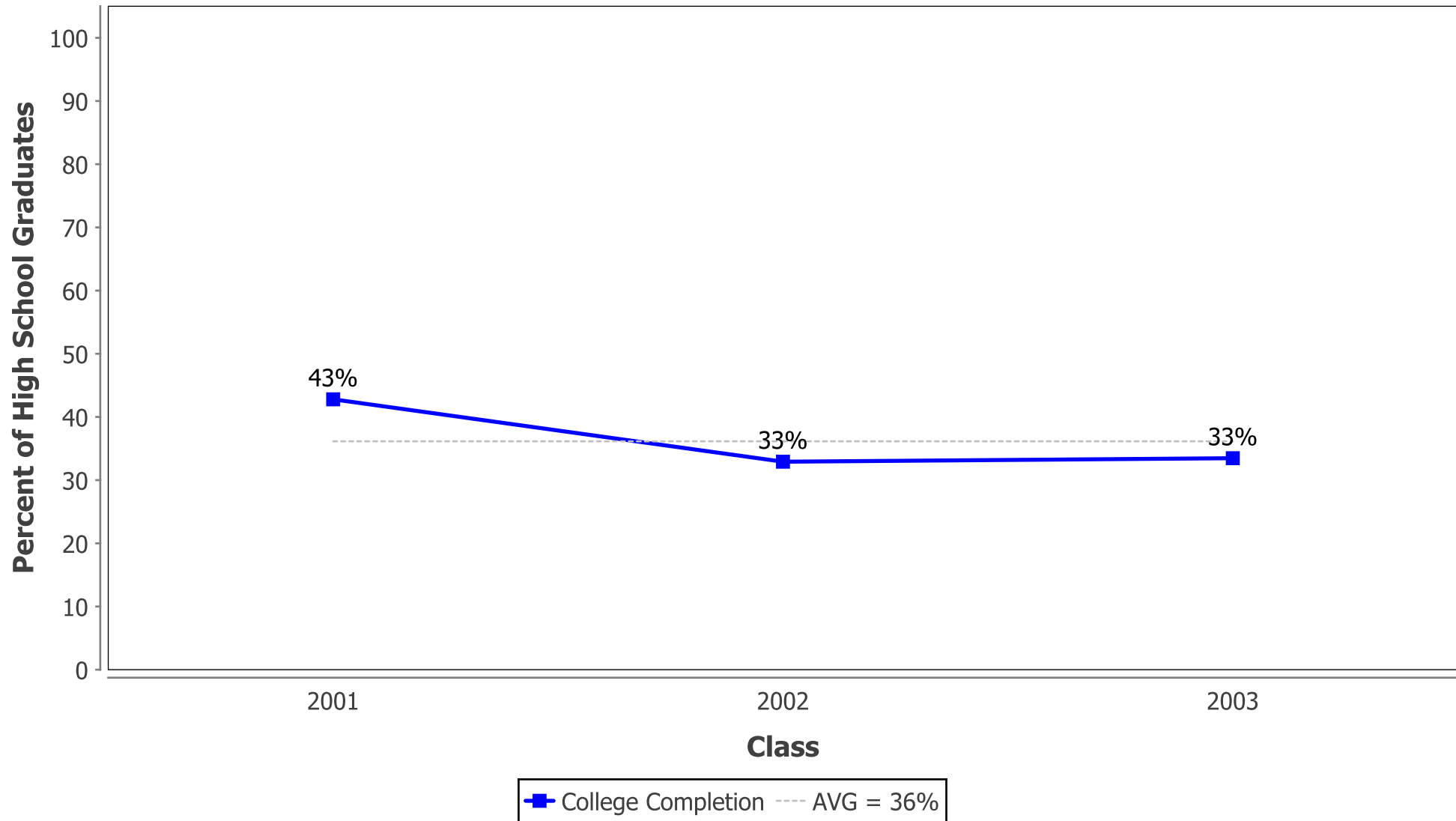
## Percent of Students Enrolled in College the First Year After High School Who Returned for a Second Year (Freshman to Sophomore Retention) by Institutional Level



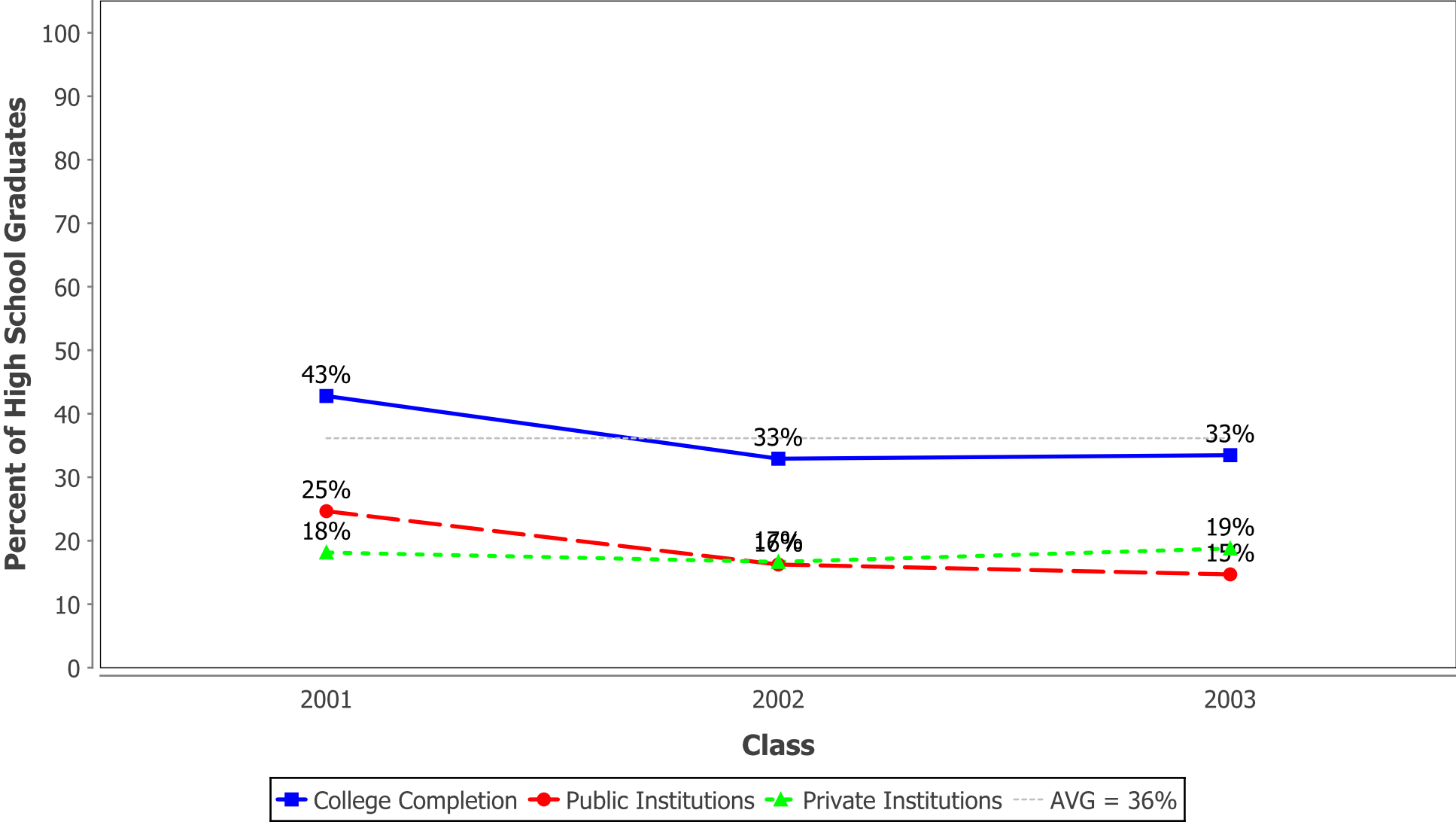
## Percent of Students Enrolled in College the First Year After High School Who Returned for a Second Year (Freshman to Sophomore Retention) by Institutional Location



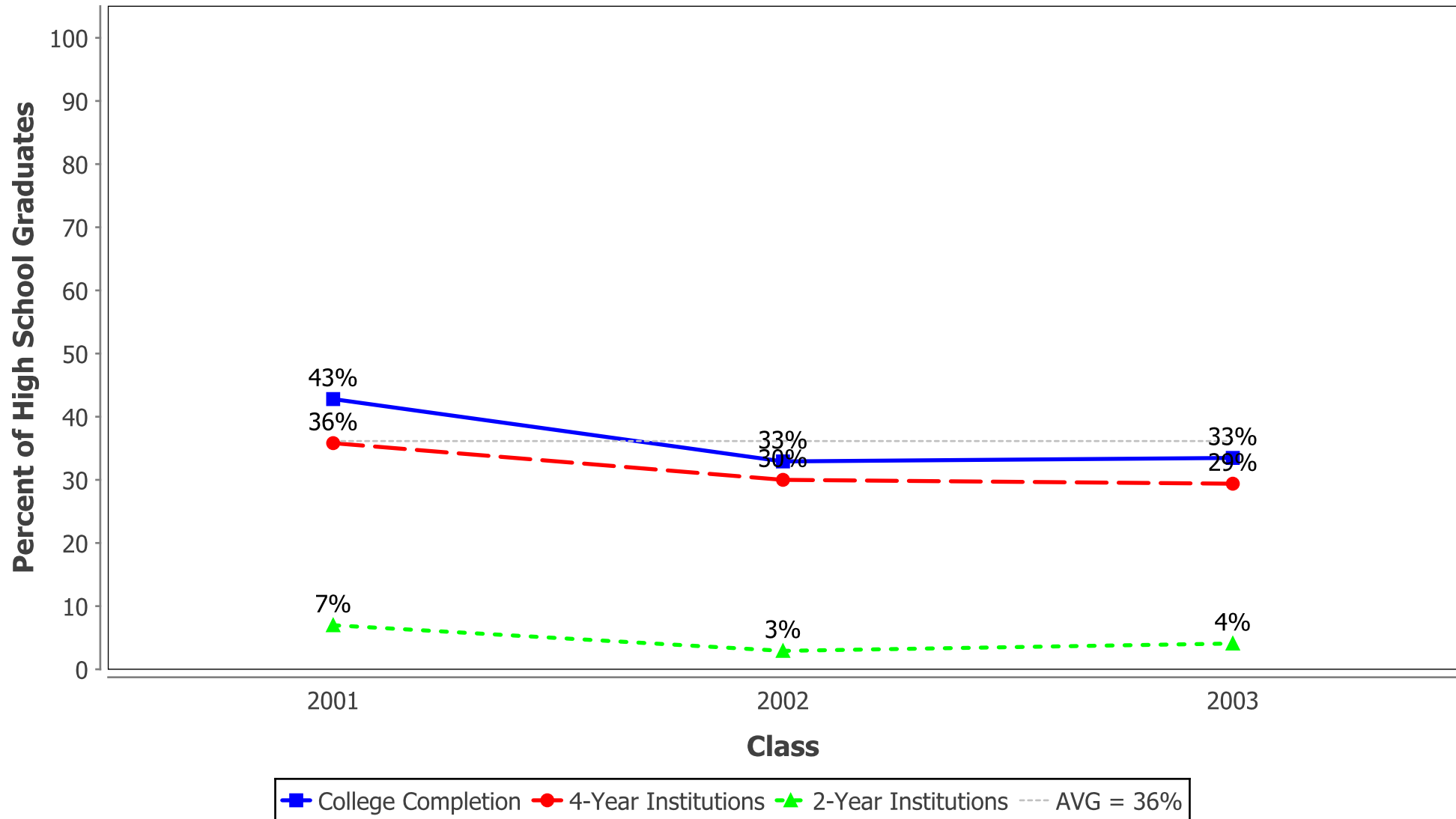
# Percent of High School Class with a College Degree



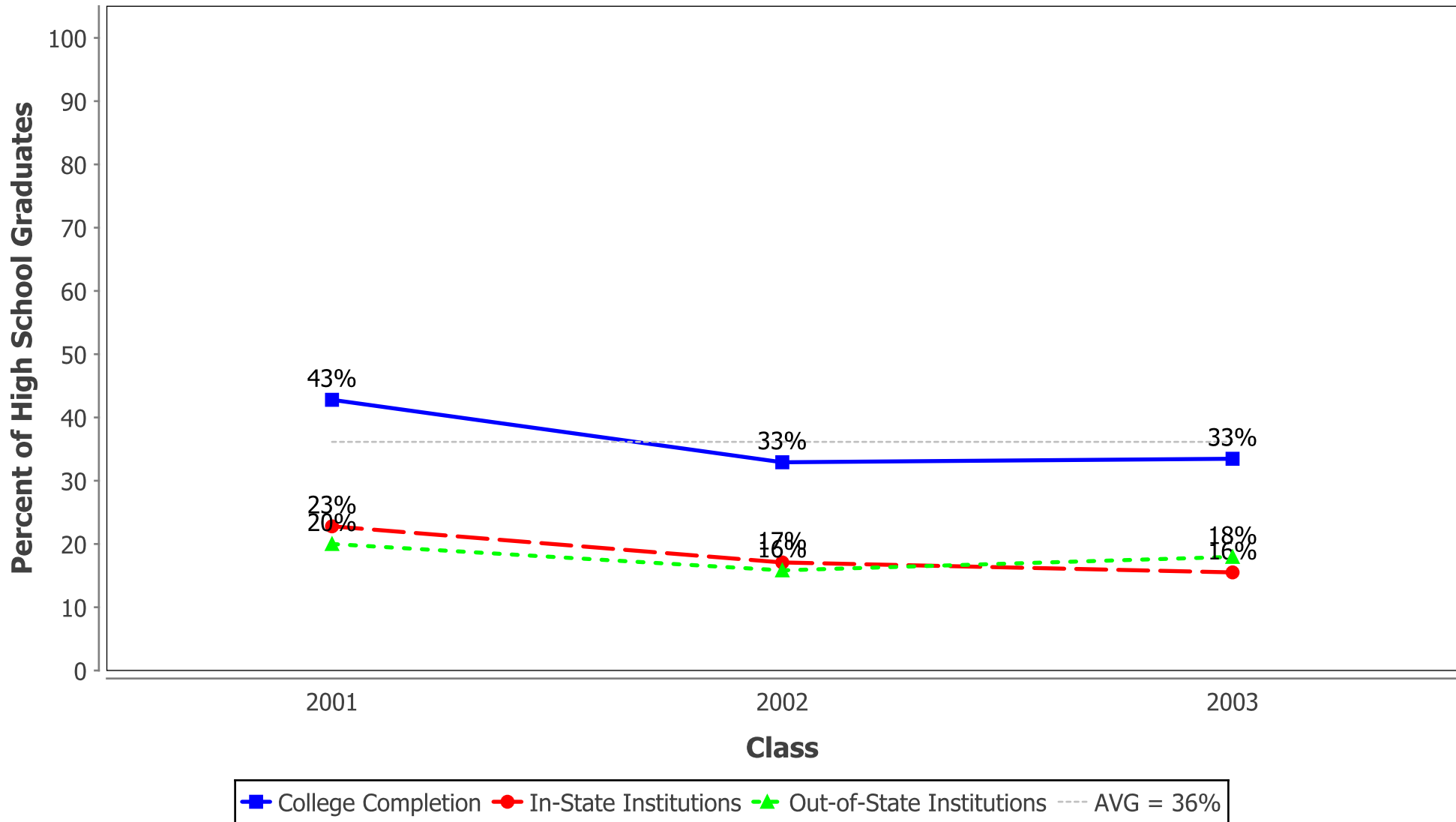
# Percent of High School Graduates with a College Degree by Institutional Type



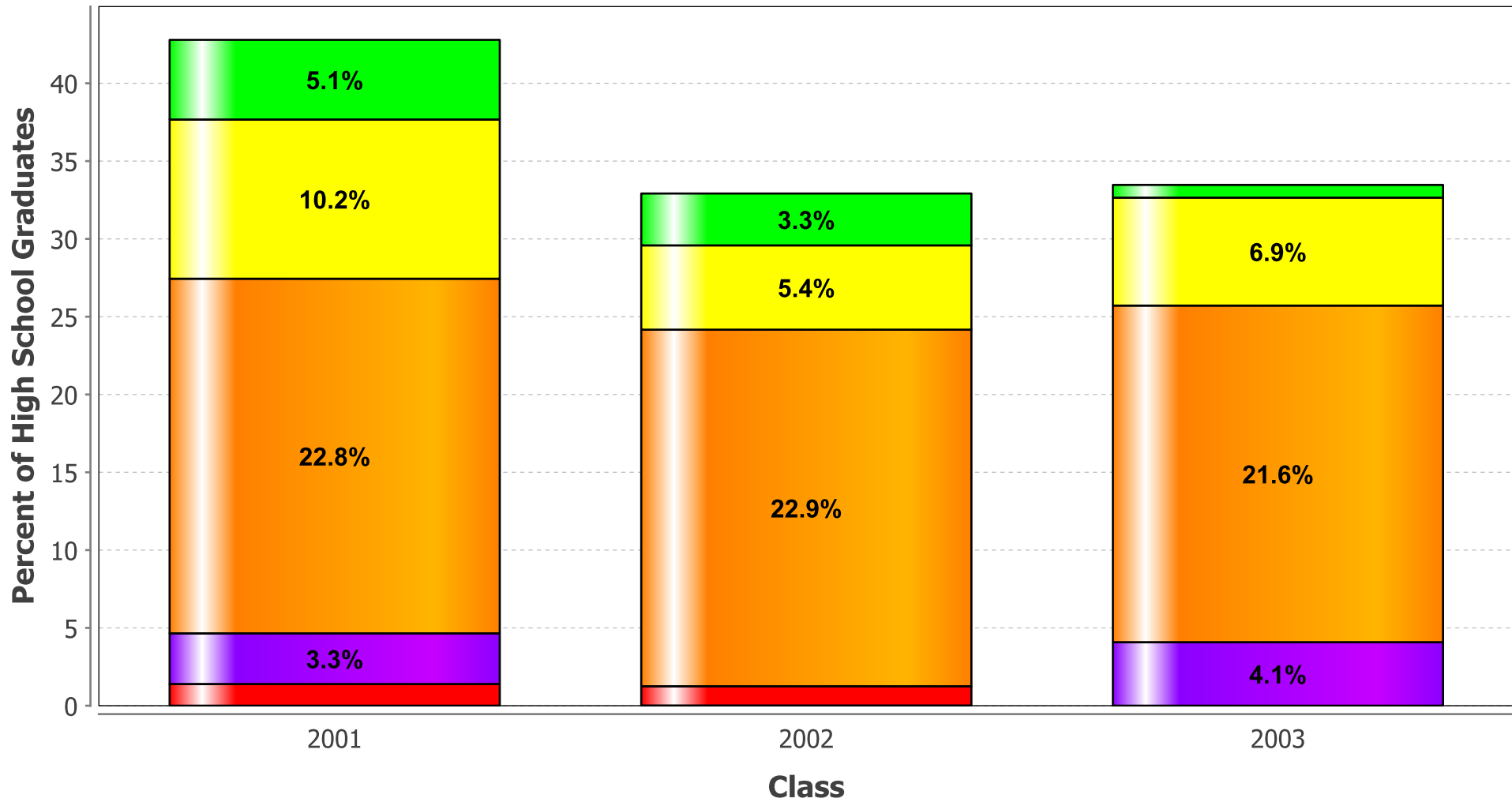
# Percent of High School Graduates with a College Degree by Institutional Level



# Percent of High School Graduates with a College Degree by Institutional Location



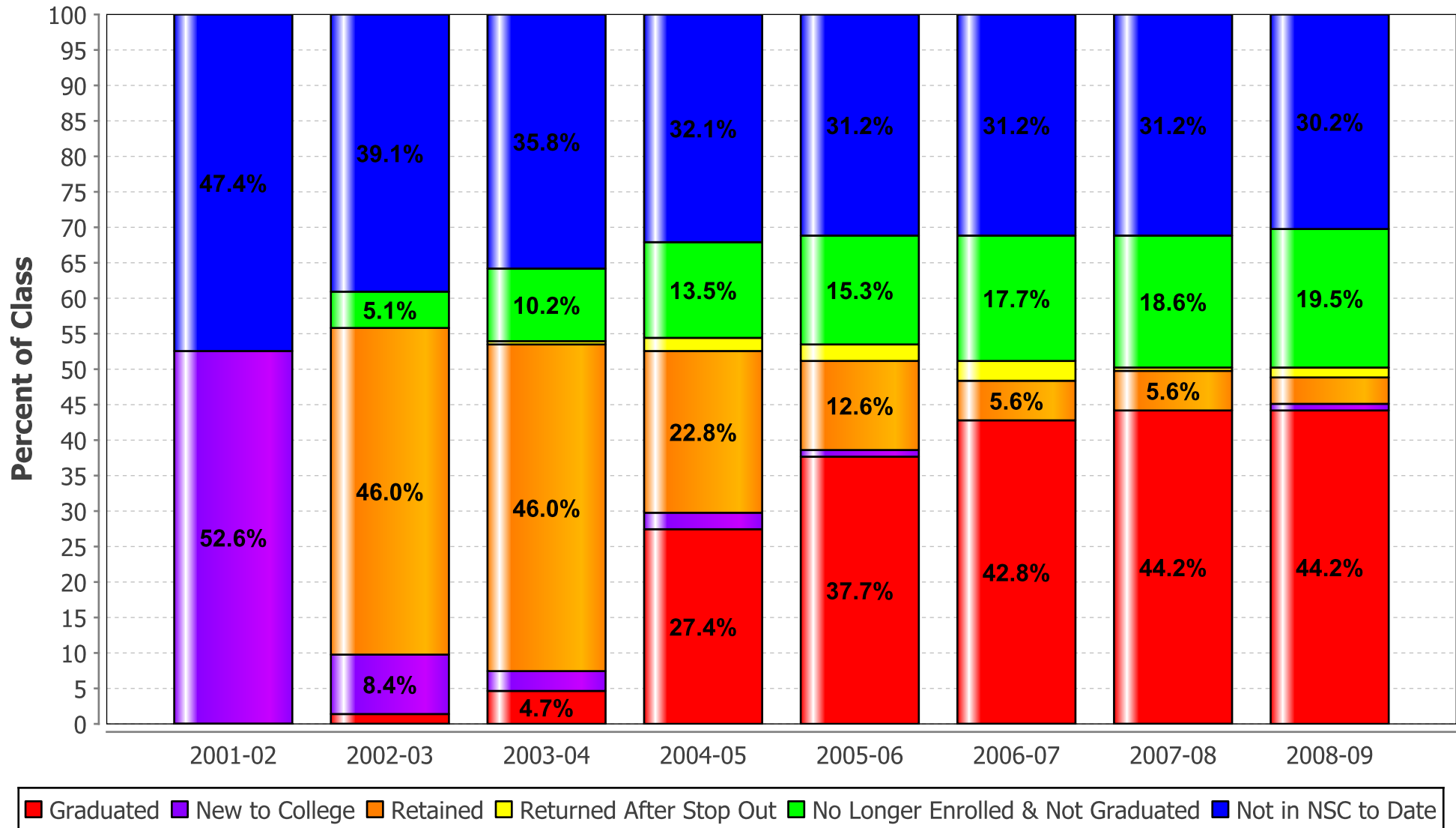
# Time to College Graduation Within Six Years (Associate's, Bachelor's and Higher)



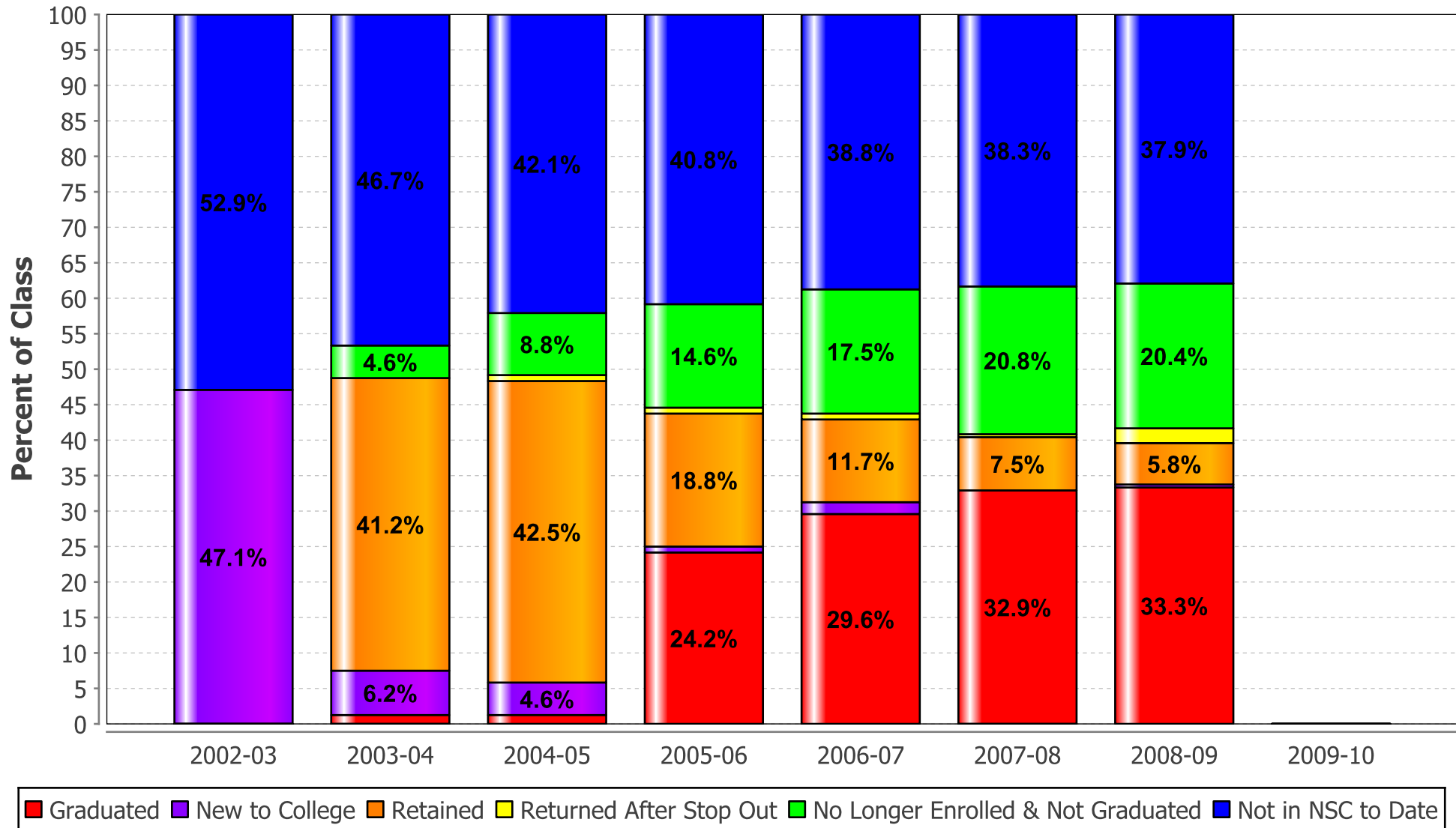
■ Graduated in 2 Years or Less 
 ■ Graduated in 3 Years 
 ■ Graduated in 4 Years 
 ■ Graduated in 5 Years 
 ■ Graduated in 6 Years



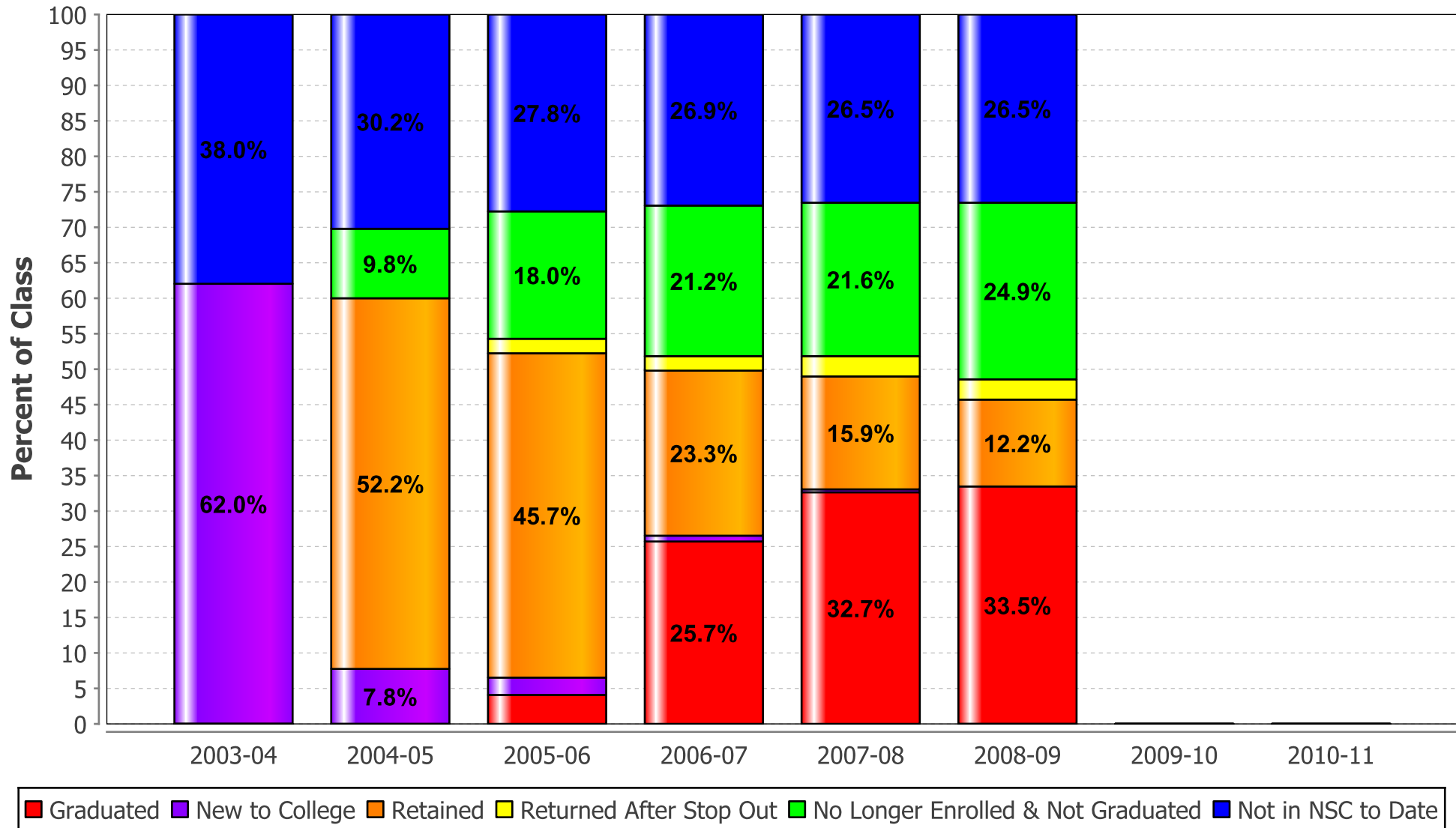
# Class of 2001 Postsecondary Enrollment and Progress



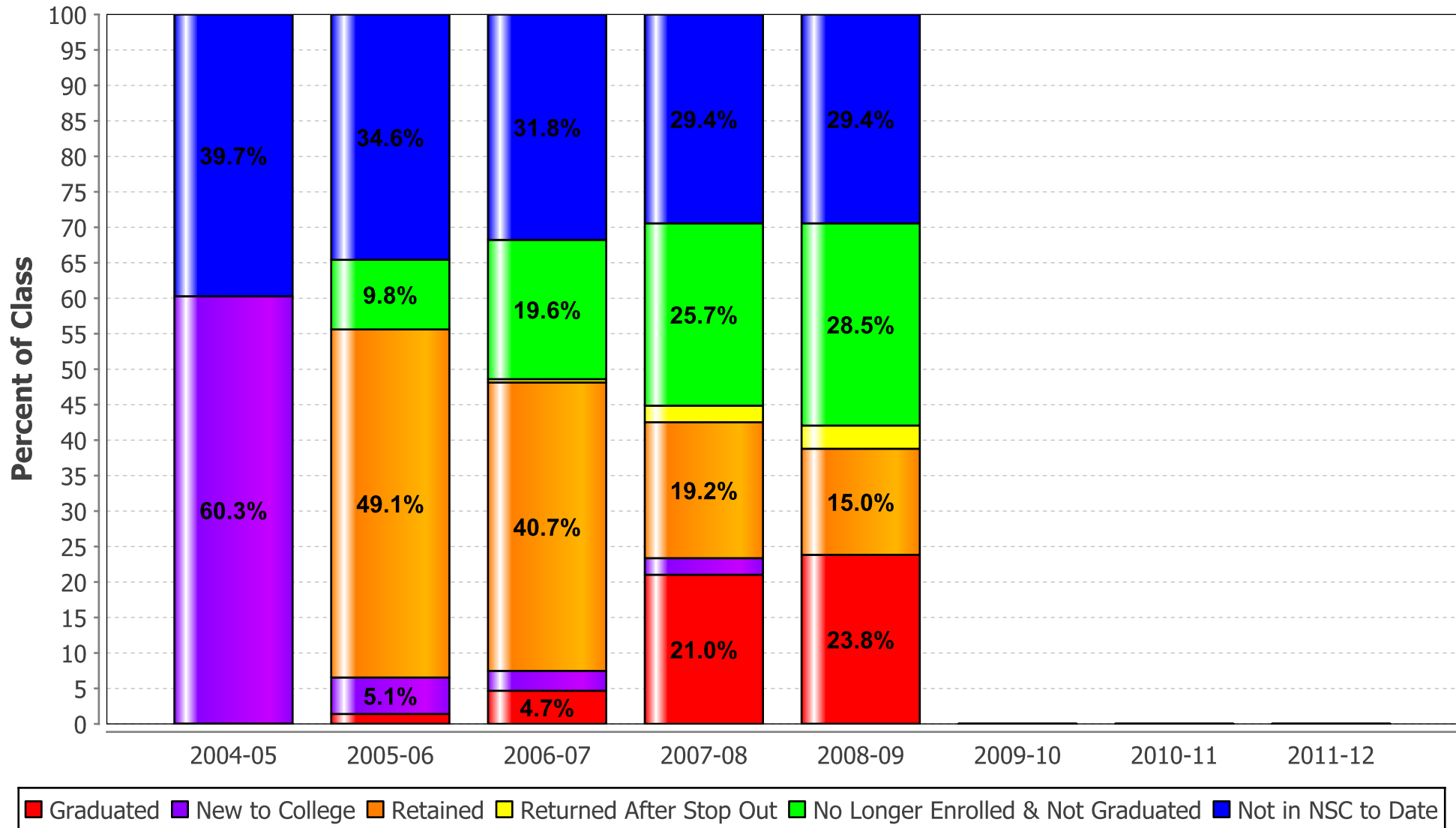
# Class of 2002 Postsecondary Enrollment and Progress



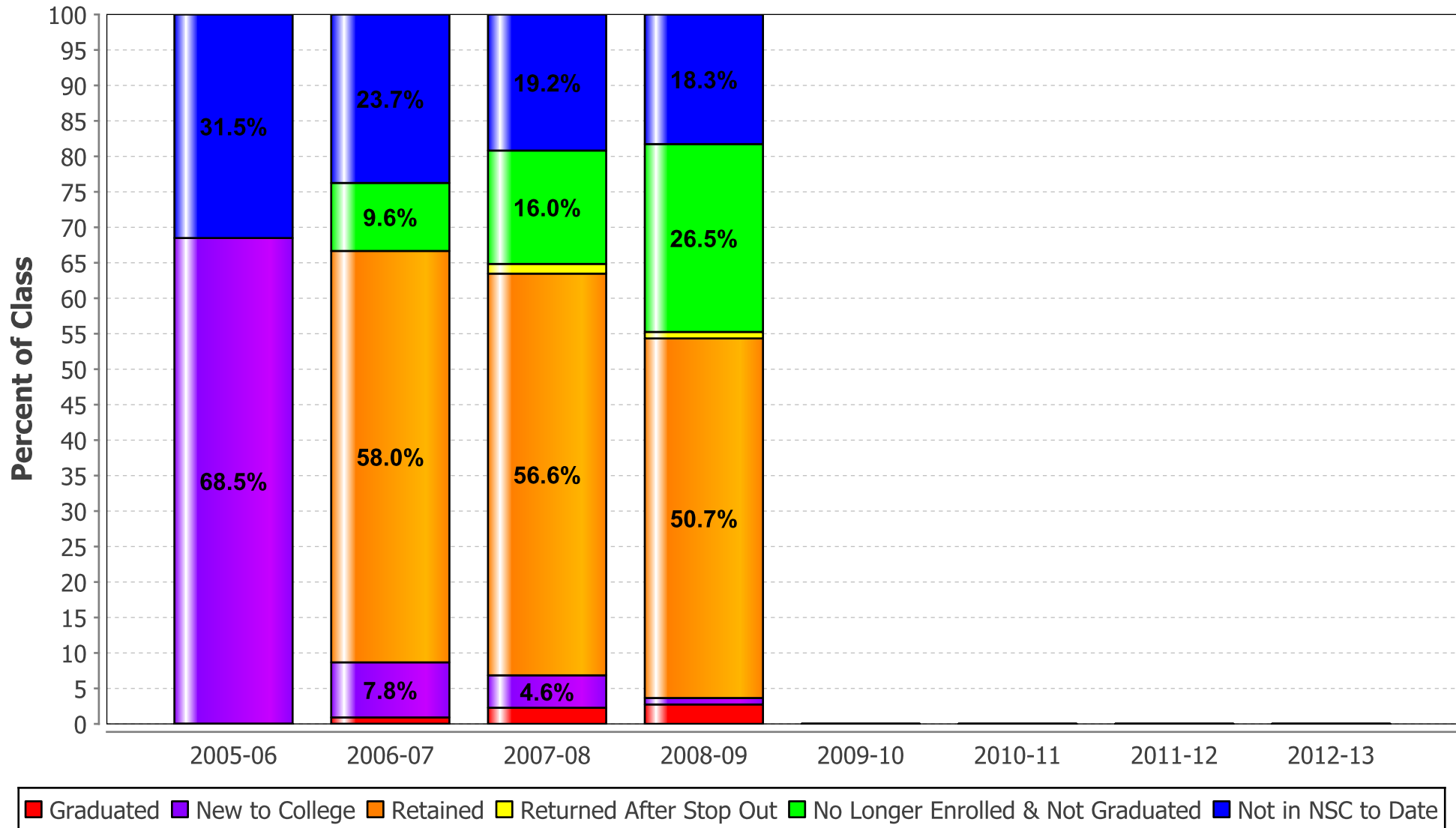
## Class of 2003 Postsecondary Enrollment and Progress



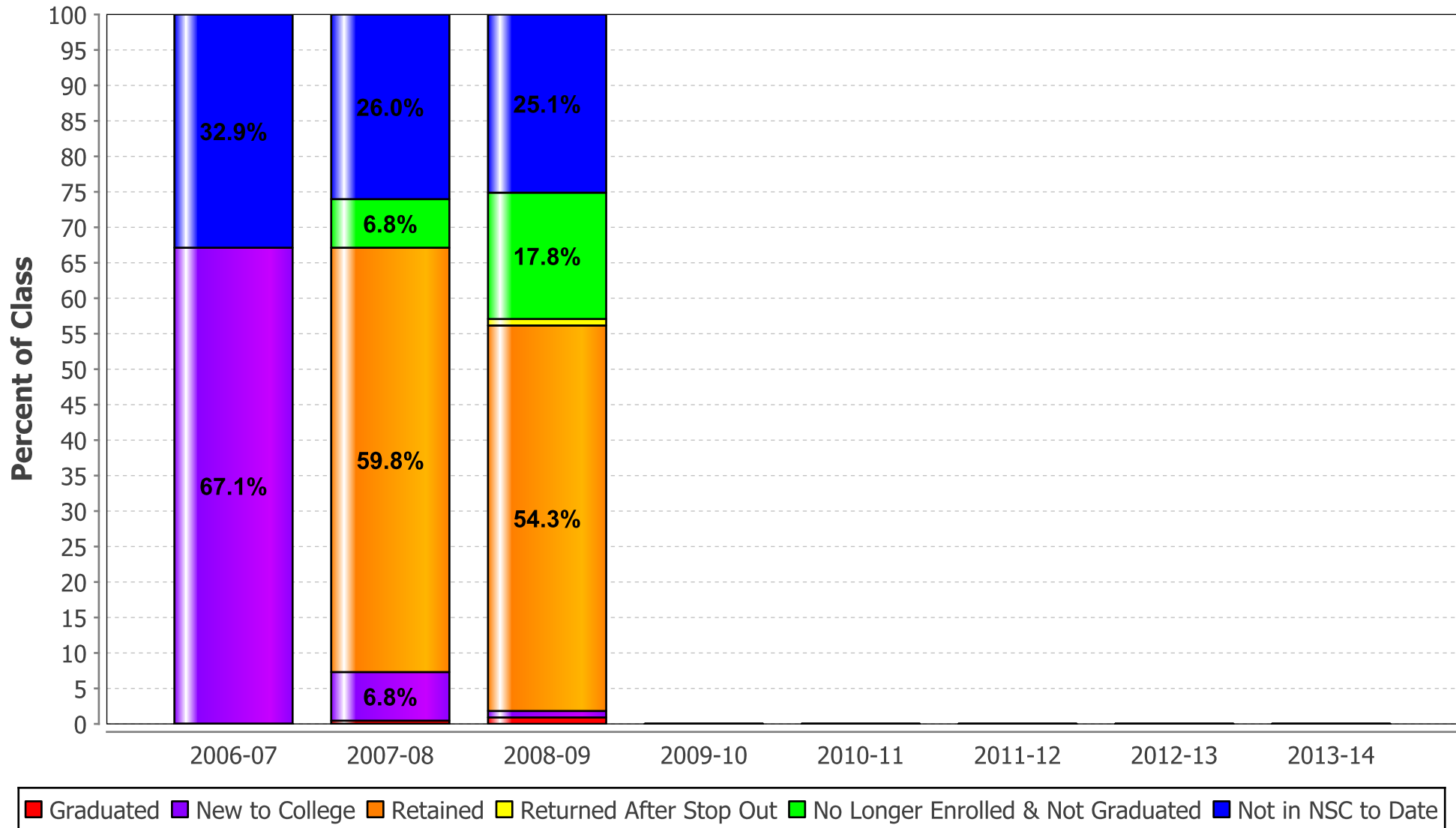
# Class of 2004 Postsecondary Enrollment and Progress



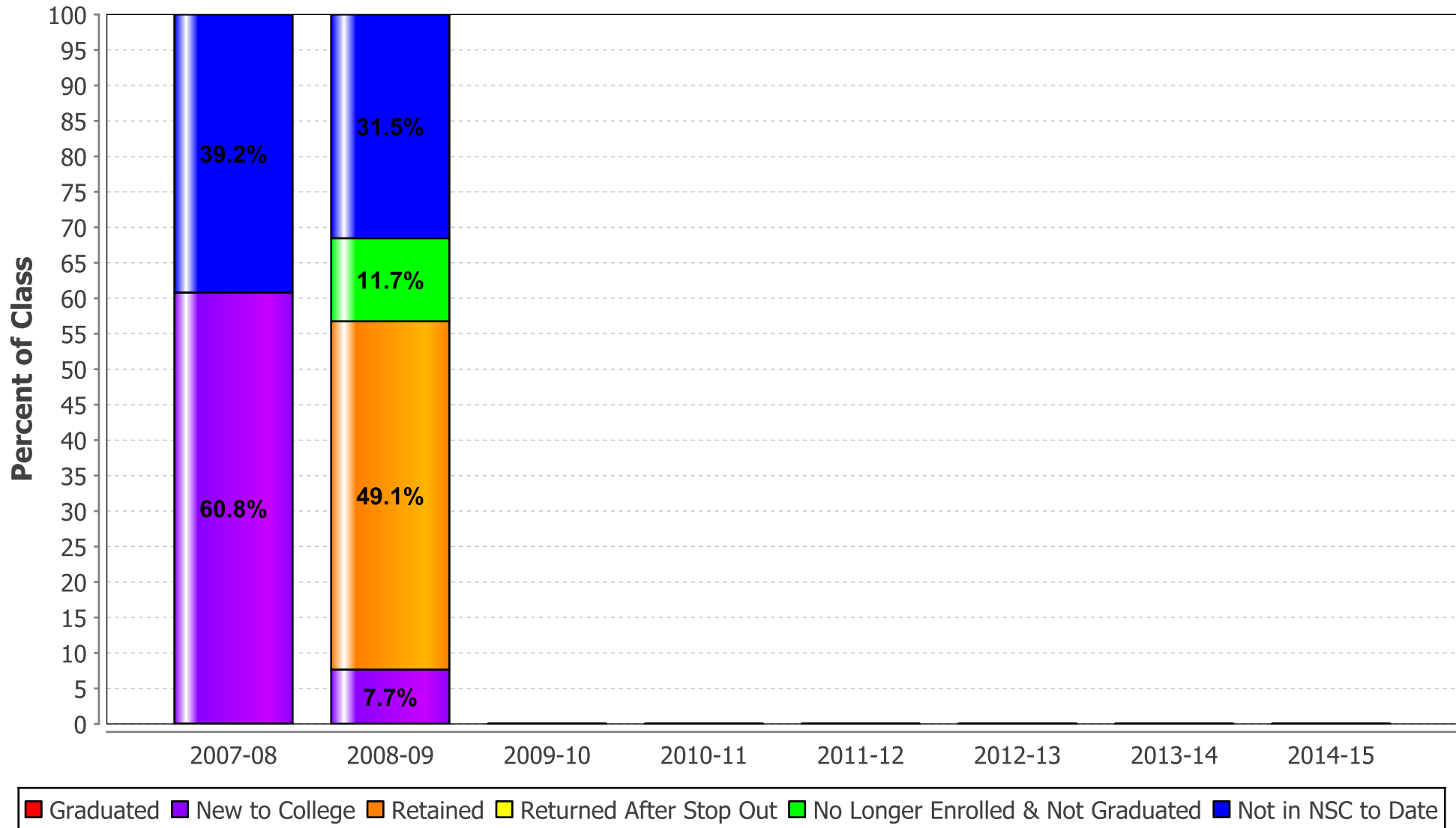
# Class of 2005 Postsecondary Enrollment and Progress



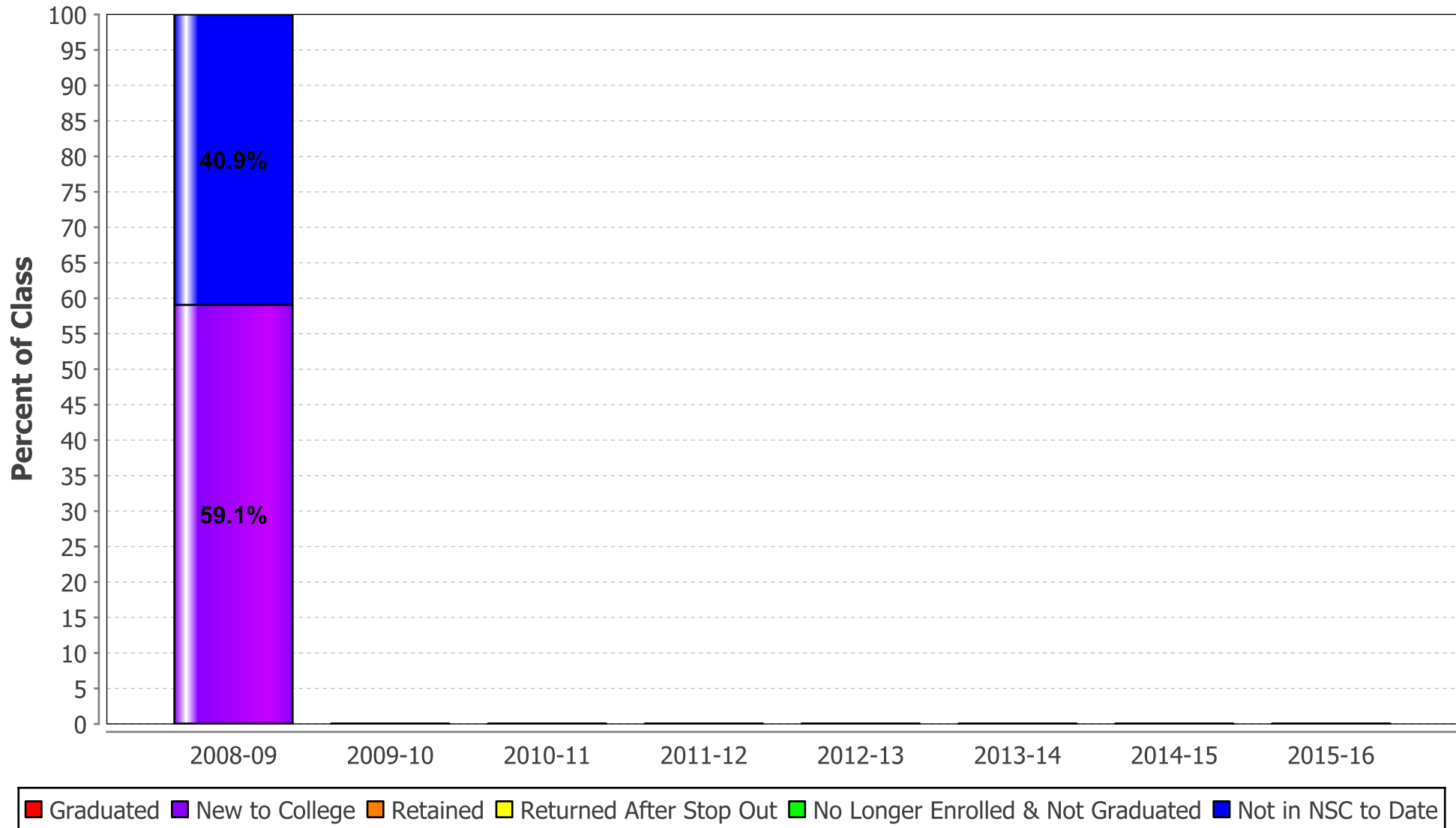
# Class of 2006 Postsecondary Enrollment and Progress



# Class of 2007 Postsecondary Enrollment and Progress



# Class of 2008 Postsecondary Enrollment and Progress





## Most Common Institutions of Initial Enrollment for All Classes – by Number of Students

1. SOUTHERN MAINE COMMUNITY COLLEGE
2. UNIVERSITY OF SOUTHERN MAINE
3. UNIVERSITY OF MAINE, ORONO
4. UNIVERSITY OF NEW HAMPSHIRE
5. UNIVERSITY OF MAINE, FARMINGTON
6. SAINT JOSEPH'S COLLEGE OF MAINE
7. BOWDOIN COLLEGE
8. UNIVERSITY OF NEW ENGLAND
9. BOSTON UNIVERSITY
10. PLYMOUTH STATE UNIVERSITY
11. STONEHILL COLLEGE
12. BATES COLLEGE
13. ENDICOTT COLLEGE
14. MAINE MARITIME ACADEMY
15. BRYANT UNIVERSITY
16. SALVE REGINA UNIVERSITY
17. WENTWORTH INSTITUTE OF TECHNOLOGY
18. JOHNSON & WALES UNIVERSITY
19. UNIVERSITY OF VERMONT & STATE AGRICULTURAL COLLEGE
20. NORTHEASTERN UNIVERSITY
21. SUFFOLK UNIVERSITY
22. UNIVERSITY OF RHODE ISLAND
23. GEORGE WASHINGTON UNIVERSITY
24. SUSQUEHANNA UNIVERSITY
25. AMERICAN UNIVERSITY

## Appendix

<b>Graphs (in order of appearance)</b>	<b>Description</b>
Percent of Students Enrolled in College the Fall Immediately Following Graduation From High School (pp. 2-5)	Percentage of high school students who enrolled in a two- or four-year postsecondary institution with an enrollment status of full-time, half-time or less-than half-time in the fall semester immediately following graduation. The fall semester immediately following graduation is defined as any term that begins before October 1st of the graduation year and ends after October 1st of the graduation year.
Percent of Students Enrolled in College at Any Time During the First Year After High School (pp. 6-9)	Percentage of high school students who enrolled in a two- or four-year postsecondary institution with an enrollment status of full-time, half-time or less-than half-time in the academic year immediately following graduation. The first year after high school includes any collegiate term that ends after August 15 of the graduation year and before August 14 of the following year.
Percent of Students Enrolled in College at Any Time During the First Two Years After High School (pp. 10-13)	Percentage of high school students who enrolled in a two- or four-year postsecondary institution with an enrollment status of full-time, half-time or less-than half-time in the two academic years immediately following graduation. The first two years includes all academic terms defined above plus all terms ending in the following year from August 15 - August 14 (including all semesters, quarters, trimesters, and periodic collegiate terms within the two-year window).
Percent of Students Enrolled in College the First Year After High School Who Returned for a Second Year (pp. 14-17)	Percentage of students who remained enrolled in postsecondary education from the first year to the second year as defined above. The graphs show the percentage of students who remained enrolled at any postsecondary institution, not retention at the same institution.
Percent of High School Class with a College Degree	The six-year degree completion at two- and four-year institutions. (Note: These graphs will only display for high school classes with at least six years of postsecondary enrollment data available. Only associate's, bachelor's and advanced degrees are counted in these rates. Certificates are not included.)
Time to College Graduation Within Six Years (Associate's, Bachelor's and Higher)	This graph shows the time to first degree broken down by the number of years since the students graduated from high school. It uses the same academic year measure defined above.
Class of XXXX Postsecondary Enrollment and Progress (each class year is on its own page)	<p>Progress of a single class of students through postsecondary education. Each segment of the bar chart corresponds to one of the following definitions:</p> <p><b>GRADUATED:</b> Student has completed an associate's, bachelor's or higher degree (certificates are not included). Once a student is counted as a graduate, he or she is not counted again elsewhere in the report. A graduated record is reported before all other possible categories (e.g., New to College, Retained, etc.)</p> <p><b>NEW TO COLLEGE:</b> First year that the student was found in the Clearinghouse database.</p> <p><b>RETAINED:</b> Student was enrolled during the previous year and continues to be enrolled in the current year. The graphs show the student's continued enrollment at any postsecondary institution, not retention at the same institution.</p> <p><b>RETURNED AFTER STOP OUT:</b> Student was enrolled, did not appear in postsecondary education the following year, and reappeared in a year thereafter.</p> <p><b>NO LONGER ENROLLED &amp; NOT GRADUATED:</b> Student was enrolled in postsecondary education, but currently is not and there is no record of completion.</p> <p><b>NOT IN NSC TO DATE:</b> Student was not found in the Clearinghouse database. (Note: Institutions that participate in the Clearinghouse represent more than 95% of the nation's two- and four-year postsecondary enrollment. Students who are enrolled in postsecondary institutions that do not participate in the Clearinghouse are not in the Clearinghouse database.)</p>
Most Common Institutions of Initial Enrollment for All Classes - by Number of Students	List of the postsecondary institutions where students are most likely to enroll first after they graduate high school.

<b>Term</b>	<b>Definition</b>
Institutional Level	Indicates the level of degree predominantly offered by the institution (i.e., two-year or four-year).
Institutional Type	Indicates whether the institution is controlled publically or by a private entity.
Institutional Location	Indicates if an institution is in-state or out-of-state based on the comparison between the states where the institution and the high school are located.

# NATIONAL STUDENT CLEARINGHOUSE<sup>®</sup>

StudentTracker for High Schools

Student-Level Detail Report

On the following page you will find a sample of the student-level detail data included with your StudentTracker report. This data can be combined with your own information to analyze educational trends and patterns by any variable you choose

STUDENT DETAIL DATA SAMPLE\*  
USA HIGH SCHOOL

Your Unique ID	Name First	Name Mid	Name Last	Requestor Suf.	Return Field	Record Found	High School Code	High School Grad Date	College Code	College Name	College State	2/4 Year	Public/Private	Period of Enrollment	Enroll Status	Grad?	Grad Date	Degree Title	Major	
9876543210	SUSAN	M	SMART		CBA321	Y	100001	20020501	222222-00	LOCAL COMMUNITY COLI	NY	2	Public	20020823	20021215	F	N			
9876543210	SUSAN	M	SMART		CBA321	Y	100001	20020501	222222-00	LOCAL COMMUNITY COLI	NY	2	Public	20030118	20030510	F	N			
9876543210	SUSAN	M	SMART		CBA321	Y	100001	20020501	222222-00	LOCAL COMMUNITY COLI	NY	2	Public	20030828	20031220	F	N			
9876543210	SUSAN	M	SMART		CBA321	Y	100001	20020501	222222-00	LOCAL COMMUNITY COLI	NY	2	Public	20040122	20040516	F	N			
9876543210	SUSAN	M	SMART		CBA321	Y	100001	20020501	654321-00	LEARNED COLLEGE	CT	4	Private	20040827	20041219	H	N			
9876543210	SUSAN	M	SMART		CBA321	Y	100001	20020501	654321-00	LEARNED COLLEGE	CT	4	Private	20050122	20050515	H	N			
9876543210	SUSAN	M	SMART		CBA321	Y	100001	20020501	654321-00	LEARNED COLLEGE	CT	4	Private	20050826	20051218	H	N			
9876543210	SUSAN	M	SMART		CBA321	Y	100001	20020501	654321-00	LEARNED COLLEGE	CT	4	Private	20060121	20060514	F	N			
9876543210	SUSAN	M	SMART		CBA321	Y	100001	20020501	654321-00	LEARNED COLLEGE	CT	4	Private	20060825	20061217	F	N			
9876543210	SUSAN	M	SMART		CBA321	Y	100001	20020501	654321-00	LEARNED COLLEGE	CT	4	Private	20070120	20070515	F	Y	20070515	BA	HISTORY
5675675675	NANCY	P	SMITH		MNO678	Y	100001	20030501	011462-00	CITY INSTITUTE OF TECH-	TX	4	Private	20030901	20031231	F	N			
5675675675	NANCY	P	SMITH		MNO678	Y	100001	20030501	011462-00	CITY INSTITUTE OF TECH-	TX	4	Private	20030901	20031231	W	N			
1029384757	FRANK	Z	JONES		BLA729	N	100001	20040515												

\*NOTE: The three examples above are of students who exhibit the following characteristics:

1. Susan Smart enrolled in college and persisted through graduation.
2. Nancy Smith enrolled in college and withdrew before graduating.
3. Frank Jones did not enroll in a college that participates in the Clearinghouse.