

# GLENBROOK SOUTH HIGH SCHOOL

*Northfield Township High School District 225*

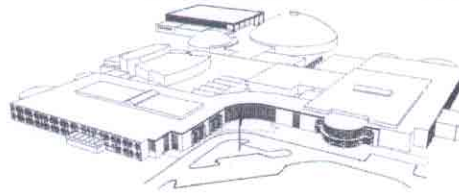
*Office of the Principal*

**To:** Dr. Mike Riggle

**From:** Brian K. Wegley

**Re:** Band Tour

**Date:** May 8, 2009



4000 WEST LAKE AVENUE  
GLENVIEW, IL 60026  
Web: [gbs.glenbrook.k12.il.us](http://gbs.glenbrook.k12.il.us)  
Telephone: 847.729.2000  
Fax: 847.486.4462

Attached is a travel request for the Glenbrook South Marching Band that has been invited to perform at Disney World with the top high school bands in the nation at the new Foundation Stage at the Epcot Center. This year's Disney program will celebrate *Our United States Heritage*. The tentative itinerary is attached.

This student travel is defined as an Educational Tour by Board Policy 7230. It involves student travel that is conducted by District but not financed by the District. Therefore, this tour will be paid for by individual students through the GBS Instrumental League

Students will leave on Wednesday, November 25, 2009, will return on Monday, November 30, 2009, and will miss Monday's day of school.

I support this tour and, as has been the case with similar band tours in the past, I believe this student travel will be a great experience.

Please let me know if you need anything further.

# GLENBROOK HIGH SCHOOLS

## Travel Requests Requiring Board of Education Approval

I. School    GBN \_\_\_ GBS X GBE \_\_\_ GBOC \_\_\_ District 225

II. Initiator    GREGORY A. WOJCIK Phone 4435  
 Position    DIRECTOR OF BANDS Date of Submission 5/2/09

III. Dates and Times of Leave/Return  
 Total Number of School Days Missed per Person    ONE DAY 11/30/09  
 Departure Date/Time    11/25/2009 Return Date/Time    11/30/09

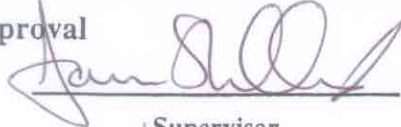
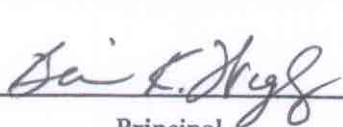
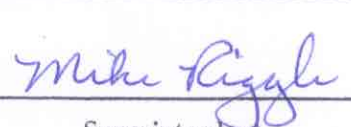
IV. Name of Individuals Participating in Tour: (Attach list if necessary.)  
 Teachers and Staff    GREGORY A. WOJCIK NEW ASSISTANT  
                                   BAND PARENT BOARD - BAND PARENTS  
 Students    1 CHAPERONE FOR EVERY 8 STUDENTS  
                                   172 - STUDENTS

V. Description, Destination, and Reason for Trip  
DUE TO OUR RECENT GRAMMY AWARD, THE GLENBROOK SOUTH H.S. MARCHING BAND HAS BEEN INVITED TO PERFORM AT DISNEY WITH THE TOP H.S. BANDS IN THE NATION AT THE NEW "FOUNTAIN STAGE" IN EPOCT. THIS THANKSGIVING SPECTACULAR WILL CELEBRATE OUR UNITED STATES HERITAGE.

VI. Cost of Trip    TRIP WILL BE PAID FOR BY INDIVIDUAL STUDENTS THROUGH THE BASIS.  
 Was this trip included in your Dept. \_\_\_\_\_ Bldg. \_\_\_\_\_ District \_\_\_\_\_ Budget? \_\_\_\_\_

	Total Amount	Per Person	Account #
Registration	\$ 1000 <sup>00</sup>	\$ 6.00	—
Lodging	\$ 60,200 <sup>00</sup>	\$ 350.00	—
Meals (Advance)	\$ 25,800 <sup>00</sup>	\$ 150.00	—
<del>PARK</del> Lodging	\$ 24,980 <sup>00</sup>	\$ 140.00	—
Substitute Teacher	—	N/A	—
Transportation	INSTRUMENTS \$27,520	\$ 160.00	—
Air	\$ 85,140 <sup>00</sup>	\$ 495 <sup>00</sup>	—
Bus/Car	\$ 23,908 <sup>00</sup>	\$ 139 <sup>00</sup>	—
District Total	—	N/A	N/A
Cost to Student	\$ 247,648 <sup>00</sup>	\$ 1440.00	N/A

VII. Approval

Supervisor
Principal
Superintendent

5/5/09
5/8/09
5/8/09

Date
Date
Date

Reminder: No purchases or expenses prior to Board of Education approval.

Form approved by Board of Education 12/15/97.



BOB ROGERS TRAVEL

Group Travel Specialists

“WE OFFER PERSONALIZED SERVICE...SECOND TO NONE”

**GLENBROOK SOUTH HIGH SCHOOL BAND**

**DIRECTORS: GREG WOJCIK**

**DESTINATION: ORLANDO, FLORIDA**

**DATES: NOVEMBER 25-30, 2009**

**SUGGESTED ITINERARY**

**AS OF**

**APRIL 9, 2009**

**WEDNESDAY, NOVEMBER 25**

*Morning* Depart out of Milwaukee Airport aboard Miami Air Charter (172 passengers)  
AM 172 passengers arrive at Sanford Airport

*Upon arrival* Load motor coaches; depart for **Downtown Disney**  
*Indulge in big-city fun in an area teeming with excitement, unique shops, restaurants and entertainment! Explore **Downtown Disney® Marketplace**, home to the largest Disney character store in the world.*

*Afternoon* Lunch at Downtown Disney (student cost)

**Suggestion:** Eat at **Earl of Sandwich**

3:30 PM Load motor coaches; depart for the Rosen Centre Hotel  
9840 International Drive  
Orlando, FL 32819  
(407) 996-9840  
[www.RosenCentre.com](http://www.RosenCentre.com)

4:30 PM **Pizza dinner** at the hotel

5:30 PM **Director's Meeting**

*Evening* **Music Rehearsal**

*-Private nighttime security at the hotel (10:30 pm-5:30 am)-*

\*\* You can book Disney restaurants 6 months in advance by calling (407) WDW-DINE.



6808 HOBSON VALLEY DRIVE, UNIT 110 WOODBRIDGE IL 60517

PHONE: (630) 824-4343 FAX: (630) 824-4349

E-MAIL: [info@bobrogerstravel.com](mailto:info@bobrogerstravel.com)

[www.bobrogerstravel.com](http://www.bobrogerstravel.com)





BOB ROGERS TRAVEL

Group Travel Specialist

**THURSDAY, NOVEMBER 26**

- 4:30 AM Load coaches; depart for Epcot®
- 5:00 AM Marching Band rehearsal in the park
- 8:00 AM **Buffet breakfast at the Millennium Village**  
*Educational kick-off, overview and celebration of the Thanksgiving Parade of Bands at Walt Disney World® Resort*
- 9:30 AM Change into uniforms and warm-up
- 10:15 AM Parade begins
- 10:30 AM Glenbrook South H.S. Band performance, along with some of our nation's top high school bands are featured at the **Fountain Stage in a Thanksgiving Spectacular** celebrating the United States' heritage.
- 11:00 AM Parade back to the United Kingdom.
- 12:00 PM Spend the remainder of the day in Epcot®  
*Touch the future and travel the world with an amazing array of attractions and live performances.*
- Don't Miss: **Soarin'™**  
*Take a free-flying adventure across the natural wonders of the Golden State aboard this thrilling Disney's California Adventure™ park attraction. With the wind in your hair, glide 40 feet in the air as you look down upon the breathtaking vistas of Yosemite and redwood forests. Soar as high as your imagination over a world of wonders.*
- Afternoon Lunch in park (student cost)
- Don't Miss: **Mission: Space!**  
*Blast into Mission: SPACE for this summer's most exhilarating, brand-new sensory thrill ride. Dare to experience the reality of space flight as this awesome new adventure puts you and your crew in command of an out-of-this-world journey. It is filled with all the risk and excitement of trying to reach Mars - so get ready to get*
- Evening **Thanksgiving Dinner at the World Showcase in Epcot**
- 9:00 PM **View IllumiNations: Reflections of Earth**  
*The sky erupts with light and fire as this nighttime spectacular celebrates our world. It's the most magnificent show of its kind in our history, with dazzling special effects, colorful lasers, brilliant fireworks, and fiery torches all choreographed to an incredible musical score.*
- 9:45 PM Load motor coaches; return to the hotel

*-Private nighttime security at the hotel (10:30 pm-5:30 am)-*



6808 HOBSON VALLEY DRIVE, UNIT 110 WOODBRIDGE IL 60517

PHONE: (630) 824-4343 FAX: (630) 824-4349

E-MAIL: [info@bobrogerstravel.com](mailto:info@bobrogerstravel.com)

[www.bobrogerstravel.com](http://www.bobrogerstravel.com)





BOB ROGERS TRAVEL  
Group Travel Specialist

**FRIDAY, NOVEMBER 27**

- 7:30 AM Buffet breakfast at the hotel
- 8:30 AM Load motor coaches; depart for rehearsal  
**TBD Marching rehearsal**
- 11:30 AM **Boxed lunches** delivered
- Following Change into uniform
- 1:00 PM Arrive backstage (dressed in uniform)
- 2:30 PM **Thanksgiving Parade of Bands at the Walt Disney World Resort:** Glenbrook South H.S. Band along with some of our nation's top high school bands have been selected to lead the **Disney Dreams Come True Parade**  
*Take in this dazzling and delightful parade as it winds its way between Town Square on Main Street, U.S.A.® and Frontierland®. Discover your favorite Disney Characters, feast your eyes on the amazing floats, move your feet to your favorite Disney music and set your imagination soaring!*
- 3:30 PM Spend the remainder of the day in the **Magic Kingdom Park®**  
*Welcome to the place where storybook fantasy is everyday reality, and Disney classics are brought to life.*
- 7:30 PM Load motor coaches; depart for **Disney's Animal Kingdom®** Theme Park
- 8:00 PM **Private party** for all the bands  
*Party to include dinner, a dj, games in Dinoland, Dinoland rides and Expedition Everest®!*
- 11:30 PM Load motor coaches; return to the hotel

*-Private nighttime security at the hotel (10:30 pm-5:30 am)-*



6808 HOBSON VALLEY DRIVE, UNIT 110 WOODBRIDGE IL 60517  
PHONE: (630) 824-4343 FAX: (630) 824-4349  
E-MAIL: info@bobrogerstravel.com  
www.bobrogerstravel.com





BOB ROGERS TRAVEL  
Group Travel Specialist

**SATURDAY, NOVEMBER 28**

- 8:30 AM Buffet breakfast at the hotel
- 9:30 AM Load motor coaches; depart for **Disney's Hollywood Studios (formerly MGM)**
- Don't miss** **Rockin' Rollercoaster starring Aerosmith!** *Aerosmith's having a backstage party across town and you're invited. Ready to brave the LA freeways? Zoom from 0-60 mph with the force of a supersonic F-14, take in high-speed loops and turns synchronized to a specially recorded Aerosmith soundtrack and zip through Tinseltown in the biggest, loudest limo you've ever seen.*
- Afternoon* Lunch in park (student cost)
- 3:00 PM Join the **Block Party Bash**  
*Featuring over 20 Disney Pixar characters including Woody, Buzz, Mike and Sulley, this incredible parade doubles as a high-energy street spectacular, complete with amazing music, fantastic floats, one-of-a-kind trampoline units, aerial acrobatics and endless surprises.*
- PM Dinner in park (**Disney dining card** provided)
- 8:30 PM View **FANTASMIC**  
*Sorcerer Mickey takes on some wicked villains in one of the most Explosive nighttime extravaganzas ever. It's an action-packed showdown between good and evil with lasers, lights, pyrotechnics, and dancing waters, all set to favorite Disney music.*
- 9:30 PM Load motor coaches; return to the hotel

-Private nighttime security at the hotel (10:30 pm-5:30 am)-



6808 HOBSON VALLEY DRIVE, UNIT 110 WOODBRIDGE IL, 60517  
PHONE: (630) 824-4343 FAX: (630) 824-4349  
E-MAIL: [info@bobrogerstravel.com](mailto:info@bobrogerstravel.com)  
[www.bobrogerstravel.com](http://www.bobrogerstravel.com)





BOB ROGERS TRAVEL  
Group Travel Specialists

**SUNDAY, NOVEMBER 29**

- 7:15 AM Buffet breakfast at the hotel
- 8:15 AM Load motor coaches; depart for your Disney workshop
- OPTION:** Glenbrook South H.S. Band participates in **Disney's "You're Instrumental" Workshop**  
*Takes concert bands into a recording studio and gives them the unique chance to record their own soundtrack to a portion of a Disney animated feature. (based on acceptance. Cost not currently included in proposal)*
- 11:45 AM Load motor coaches; depart for the **Magic Kingdom Park®**  
*Welcome to the place where storybook fantasy is everyday reality, and Disney classics are brought to life.*
- Afternoon* Lunch in park (student cost)
- Evening* Dinner in park (**Disney dining card** provided)
- TBD** View the **SpectroMagic Parade**  
*It's the next generation of nighttime parades as your favorite Disney Characters light up with magical fiber-optic light and dance down Main Street, U.S.A., and John Debney's magnificent score fills the air. There are enough memorable moments in the procession to brighten your dreams for many nights to come.*
- TBD** View **Wishes™ Nighttime Spectacular** Fireworks Display  
*The biggest ongoing fireworks spectacular. It features an original soundtrack, character voices from several Disney animated films and narration by Jiminy Cricket. During the show guests will witness the wishes being made by Disney characters.*
- 10:45 PM Load motor coaches; return to the hotel

*-Private nighttime security at the hotel (10:30 pm-5:30 am)-*

**OPTION:**

- Evening* Load motor coaches; depart for **Downtown Disney**
- PM Glenbrook South H.S. Jazz Band *Performance* at the **Waterside Stage**  
*(based on acceptance)*



6808 ROBSON VALLEY DRIVE, UNIT 110 WOODBRIDGE IL 60517  
PHONE: (630) 824-4343 FAX: (630) 824-4349  
E-MAIL: [info@bobrogerstravel.com](mailto:info@bobrogerstravel.com)  
[www.bobrogerstravel.com](http://www.bobrogerstravel.com)





BOB ROGERS TRAVEL  
Group Travel Specialist

**MONDAY, NOVEMBER 30**

8:30 AM Buffet breakfast at the hotel  
*Morning* **Pool time**  
10:30 AM Check-out of the hotel; begin loading motor coaches  
11:00 AM Depart for **Planet Hollywood**  
11:30 AM **Group lunch**

2:15 PM Everyone loads motor coaches and departs for Sanford Airport

*Evening* 172 passengers depart out of Sanford Airport aboard Miami Air Charter  
PM 172 passengers arrive at Milwaukee Airport



6808 HOBSON VALLEY DRIVE, UNIT 110 WOODBRIDGE IL 60517  
PHONE: (630) 824-4343 FAX: (630) 824-4349  
E-MAIL: [info@bobrogerstravel.com](mailto:info@bobrogerstravel.com)  
[www.bobrogerstravel.com](http://www.bobrogerstravel.com)







BOB ROGERS TRAVEL  
Group Travel Specialist

**"WE OFFER PERSONALIZED SERVICE...SECOND TO NONE"**

**GLENBROOK SOUTH HIGH SCHOOL BAND  
DIRECTORS: GREG WOJCIK  
DESTINATION: ORLANDO, FLORIDA  
DATES: NOVEMBER 25-30, 2009**

**PROPOSAL IS BASED ON 172 PASSENGERS**

### SUMMARY OF INCLUSIONS

- Personal SERVICE and ATTENTION
- Round-trip airfare out of Milwaukee to Sanford Airport (172 seats)  
*(Group must pay for all 172 seats. This charter is subject to an additional fuel surcharge\*. Please refer to your Charter Air Contract for details regarding a possible fuel surcharge.)*
- Ground transportation in Orlando aboard deluxe motor coaches
- Gratuities for your motor coach drivers
- Five (5) night's accommodation at an Orlando hotel
- Private nighttime security at the hotel
- Four (4) **breakfasts** at the hotel
- **Pizza dinner**
- **Group lunch at Planet Hollywood**
- Two (2) **Disney dining cards**
- One (1) **box lunch**
- **Walt Disney World® 4-Day park hopper**
- Participation in the Thanksgiving Parade of Bands at the **Walt Disney World® Resort**
  - *Performance in the Thanksgiving Spectacular at the Fountain Stage in Epcot*
  - *Performance in the Disney Dreams Come True Parade as part of the **Thanksgiving Parade of Bands at the Walt Disney World Resort***
  - *Buffet breakfast at Epcot*
  - *Thanksgiving dinner*
  - *Private party at Disney's Animal Kingdom to include dinner, dj, games and various rides.*
- Four (4) **COMPLIMENTARY Director Packages**
- Insurance Coverage as Recommended by Student Youth Travel Association
- \$200,000 Consumer Protection Plan
- Bob Rogers Travel Director's Tour Manual and Bob Rogers Travel Hotel Contract

**INCLUSIONS CONTINUE ON NEXT PAGE. TOUR PACKAGE COSTS ARE ON THE NEXT PAGE!**



6808 HOBSON VALLEY DRIVE, UNIT 110 WOODBRIDGE IL, 60517  
PHONE: (630) 824-4343 FAX: (630) 824-4349  
E-MAIL: [info@bobrogerstravel.com](mailto:info@bobrogerstravel.com)  
[www.bobrogerstravel.com](http://www.bobrogerstravel.com)





BOB ROGERS TRAVEL  
Group Travel Specialist

### SUMMARY OF INCLUSIONS (CONTINUED)

- **Create-A Video Souvenir Memory Package**
- *A great keepsake of a fabulous trip! Digital cameras will be sent. Take pictures throughout your trip, then mail back the cameras AND a recording of your music. A souvenir video will be created, and each traveler will receive a copy.*
- **Luggage Tags**
- **Company Tour Escort:** *On-site trip coordinator who manages all trip details at your destination.*

### OPTIONS/NON-INCLUSIONS

- Meals which state student cost
- **Disney's "You're Instrumental" Workshop-** \$27/person
- Ground transportation to/from Milwaukee Airport
- **Potential fuel surcharges – I recommend padding our costs \$25/person.**

### DISNEY 4 DAY PARK HOPPER

The prices below **include** a Disney 4 Day park hopper – the three day passport includes 4 days admission to the **Magic Kingdom®** Park, **Epcot®**, **Disney's Hollywood Studios**, and **Disney's Animal Kingdom®** Theme Parks.

### ESTIMATED TOUR PACKAGE COSTS (based on filling 172 passenger charter plane)

\$1,440.00/person (based on quad occupancy)  
\$1,500.00/person (based on triple occupancy)  
\$1,561.00/person (based on double occupancy)  
\$1,802.00/person (based on single occupancy)

*"You create the music...we'll do the rest!"*

April 9, 2009



6808 HOBSON VALLEY DRIVE, UNIT 110 WOODBRIDGE IL 60517  
PHONE: (630) 824-4343 FAX: (630) 824-4549  
E-MAIL: [info@bobrogerstravel.com](mailto:info@bobrogerstravel.com)  
[www.bobrogerstravel.com](http://www.bobrogerstravel.com)

