
OFFICE OF THE ASSISTANT SUPERINTENDENT FOR EDUCATIONAL SERVICES

TO: DR. MIKE RIGGLE
FROM: DR. ROSANNE WILLIAMSON
SUBJECT: STUDENT ACHIEVEMENT AND DASHBOARD REPORTS
DATE: SEPTEMBER 11, 2009
CC: BOARD OF EDUCATION

At the September 21 Board meeting, we will be bringing to the Board pertinent data related to student achievement, especially as evidenced by the Prairie State Achievement Exam (PSAE) and Advanced Placement exams administered last spring. School Report Cards will be released by the state board of education at the end of October, so it is appropriate that, in advance of that date, we review what we know relative to No Child Left Behind and our adequate yearly progress (AYP). The attached dashboard reports will provide you with necessary background information for the PowerPoint presentation at the Board meeting on this topic.

At the October 26 Board meeting, we will provide the Board with pertinent student and teacher demographic data. At a Board meeting later this spring, we will present the Board with the financial dashboards from the business office. This comprehensive document incorporates data from earlier reports and will assist administrators and the Board in future planning.



Dashboard Reports

Glenbrook High Schools
Northfield Township District 225
2009-2010

TABLE OF CONTENTS

Student Demographics

Student Graduation Rate	1
Students Continuing on to College	1

Student Achievement

Average All-Subject Credits Taken by Graduates	2
Average Number Credits Taken by Graduates	2
Average GPA	2
Average ACT	3
PSAE Performance Levels by Subject Matter	4
PSAE Performance by Ethnicity	5
PSAE Performance Levels – IEP Students	6
Average Academic GPA by Quartile	7
Advanced Placement Exams	8
Average Composite ACT Score (By Ethnicity)	9
Average Reading PSAE Score	10
Average Math PSAE Score	11
Average Science PSAE Score	12
Average Reading PSAE Score (By Ethnicity)	13
Average Math PSAE Score (By Ethnicity)	14
Average Science PSAE Score (By Ethnicity)	15
Average PSAE Score by Subject Area (Low Income Students)	16
Average PSAE Score by Subject Area (Special ED)	17
PSAE Percentage of Student Meeting or Exceeding in at least one PSAE Subject Area	18
PSAE – Low Income Students Performance Levels	19

Student Graduation Rate

	2004(%)	2009 (%)
GBN	97.0%	99.4%
GBS	95.7%	99.0%
District 225	96.3%	99.4%
State	86.6%	N/A

Source Data: Illinois School Report Card

Students Continuing on to College

2004						
% of Graduates that Continued to College		% of Students that Continued on to College Attending a 2 or 4 year college				
%	Count	2-Year		4-Year		
		%	Count	%	Count	
GBN	98.4%	(490)	11.2%	(55)	88.8%	(435)
GBS	96.0%	(560)	18.0%	(105)	78.0%	(455)

2009						
% of Graduates that Continued to College		% of Students that Continued on to College Attending a 2 or 4 year college				
%	Count	2-Year		4-Year		
		%	Count	%	Count	
GBN	97.0%	(443)	9.6%	(47)	90.4%	(443)
GBS	97.7%	(597)	19.1%	(117)	78.6%	(480)

Source Data: GBN and GBS College Counselor.

Student Achievement Executive Summary

Average All-Subject Credits Taken by Graduates

GBN
GBS

2004	
GBN	27.44
GBS	26.56

2009	
GBN	27.75
GBS	27.12

Source Data: District 225 OutCASTS and SASI-XP Database

Average Number Credits Taken by Graduates

GBN
GBS

2009				
	English	Mathematics	Science	Social Studies
GBN	4.51	3.91	3.88	3.72
GBS	4.63	3.78	3.5	3.62

Source Data: District 225 OutCASTS and SASI-XP Database

Average GPA

GBN
GBS

2004	
All Subject	Academic
GBN	3.17
GBS	3.10
	3.27
	3.11

2009	
All Subject	Academic
GBN	3.19
GBS	3.08
	3.29
	3.10

Source Data: District 225 OutCASTS and SASI-XP Database

Average ACT

	2009						
	Composite	English	Math	Reading	Science	Core (# of Students Tested)	Non-Core (# of Students Tested)
GBN	25.6	26.5	25.9	25.2	24.4	26.0 (383)	24.5 (86)
GBS	24.4	24.6	24.7	24.1	23.7	25.6 (440)	22.2 (188)
District	25.0	25.6	25.3	24.7	24.1	25.8	23.4
State	20.8	20.5	20.7	20.8	20.7	22.7	19.0

Source Data: ACT H.S. Profile Report - Graduating Class of 2009

Average ACT Score by Ethnicity for the District

	Count	2009			
		English Score	Math Score	Reading Score	Science Score
Caucasian	710	26	25	25	24
African American	14	23	22	22	21
Asian	163	26	27	25	25
Hispanic	51	20	21	20	21

The 2009 ACT H.S. Profile Report summarizes the preparation and performance of 2009 graduates who took the ACT Assessment during the 2006-07, 2007-08 or 2008-09 academic years. The most recent set of test score is used in this report for students testing more than one time.

Source Data: ACT H.S. Profile Report - Graduating Class of 2009

PSAE Performance Level By Subject Matter - District

	Reading			Mathematics			Science		
	2007	2008	2009	2007	2008	2009	2007	2008	2009
Exceeds	26.4%	24.4%	24.4%	28.6%	30.1%	27.9%	24.4%	22.9%	25.4%
Meets Standards	54.2%	51.9%	53.4%	56.7%	51.8%	54.1%	54.6%	56.0%	50.4%
Below Standards	18.1%	20.6%	19.6%	12.2%	15.5%	16.4%	19.4%	18.7%	22.4%
Academic Warning	1.3%	3.1%	2.6%	2.4%	2.5%	1.6%	1.7%	2.4%	1.8%

PSAE Assessment Scores Summary Report

PSAE Performance Level By Subject Matter - 2009

	Reading		Mathematics		Science	
	GBN	GBS	GBN	GBS	GBN	GBS
Exceeds	25.6%	23.4%	29.6%	26.5%	27.8%	23.6%
Meets Standards	57.3%	50.5%	55.8%	52.7%	50.7%	50.2%
Below Standards	15.9%	22.5%	13.7%	18.6%	20.5%	23.9%
Academic Warning	1.2%	3.6%	0.8%	2.2%	1.0%	2.3%

PSAE Assessment Scores Summary Report

*Due to rounding, percents may not sum to 100.

PSAE Performance Level By Ethnicity for the DISTRICT - READING

	White		African American		Hispanic		Asian/Pacific Islander	
	2009	N	2009	N	2009	N	2009	N
Exceeds	26.0%	224	0.0%	0	9.8%	7	26.3%	40
Meets Standards	56.3%	485	0.0%	0	40.7%	26	48.2%	78
Below Standards	16.6%	144	50.0%	5	34.7%	25	23.4%	40
Academic Warning	1.3%	11	50.0%	5	15.0%	12	2.2%	5

PSAE Assessment Scores Summary Report

PSAE Performance Level By Ethnicity for the DISTRICT - MATH

	White		African American		Hispanic		Asian/Pacific Islander	
	2009	N	2009	N	2009	N	2009	N
Exceeds	27.4%	236	0.0%	0	6.4%	5	43.7%	68
Meets Standards	57.4%	495	40.0%	4	46.2%	29	45.5%	79
Below Standards	14.1%	122	60.0%	6	44.3%	33	10.0%	15
Academic Warning	1.3%	11	0.0%	0	3.2%	3	0.9%	2

PSAE Assessment Scores Summary Report

PSAE Performance Level By Ethnicity for the DISTRICT - SCIENCE

	White		African American		Hispanic		Asian/Pacific Islander	
	2009	N	2009	N	2009	N	2009	N
Exceeds	26.9%	232	0.0%	0	8.5%	7	30.0%	42
Meets Standards	52.0%	449	70.0%	7	37.4%	24	46.6%	83
Below Standards	20.3%	176	30.0%	3	47.9%	33	21.7%	35
Academic Warning	1.0%	8	0.0%	0	6.3%	6	1.8%	4

PSAE Assessment Scores Summary Report

PSAE Performance Level - IEP Students - READING

	GBN						GBS					
	2007	N	2008	N	2009	N	2007	N	2008	N	2009	N
Exceeds	14.3%	9	21.3%	13	12.5%	6	10.9%	6	7.3%	4	4.3%	2
Meets Standards	49.2%	31	45.9%	28	41.7%	20	30.9%	17	38.2%	21	21.7%	10
Below Standards	30.2%	19	26.2%	16	39.6%	19	47.3%	26	40.0%	22	52.2%	24
Academic Warning	6.3%	4	6.6%	4	6.3%	3	10.9%	6	14.5%	8	21.7%	10
	100%	63	100%	61	100%	48	100%	55	100%	55	100%	46

PSAE Assessment Scores Summary Report

PSAE Performance Level - IEP Students - MATH

	GBN						GBS					
	2007	N	2008	N	2009	N	2007	N	2008	N	2009	N
Exceeds	12.7%	8	9.8%	6	14.6%	7	9.1%	5	5.5%	3	0.0%	0
Meets Standards	36.5%	23	42.6%	26	37.5%	18	29.1%	16	36.4%	20	27.7%	13
Below Standards	36.5%	23	41.0%	25	41.7%	20	36.4%	20	34.5%	19	48.9%	23
Academic Warning	14.3%	9	6.6%	4	6.3%	3	25.5%	14	23.6%	13	23.4%	11
	100%	63	100%	61	100%	48	100%	55	100%	55	100%	47

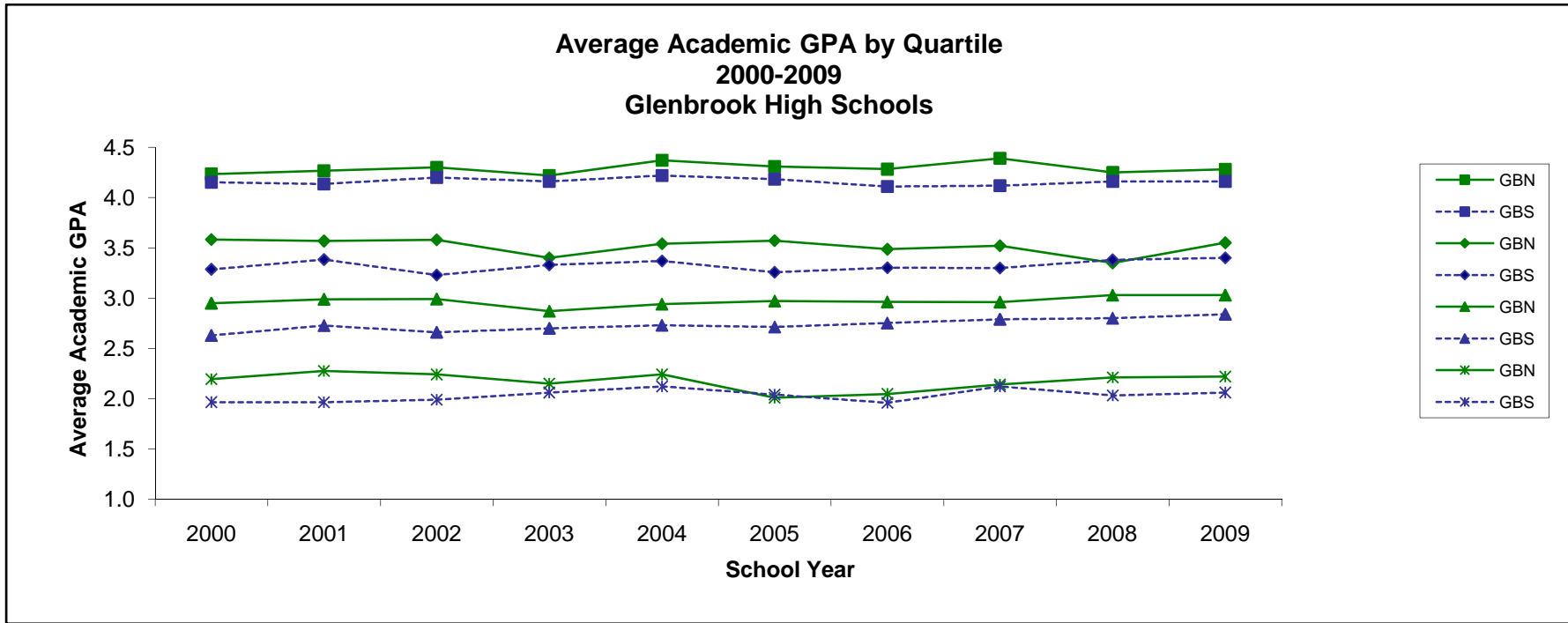
PSAE Assessment Scores Summary Report

PSAE Performance Level - IEP Students - SCIENCE

	GBN						GBS					
	2007	N	2008	N	2009	N	2007	N	2008	N	2009	N
Exceeds	12.7%	8	9.8%	6	14.3%	7	3.6%	2	9.1%	5	2.1%	1
Meets Standards	36.5%	23	45.9%	28	28.6%	14	30.4%	17	27.3%	15	23.4%	11
Below Standards	42.9%	27	37.7%	23	51.0%	25	46.4%	26	40.0%	22	59.6%	28
Academic Warning	7.9%	5	6.6%	4	6.1%	3	17.9%	10	23.6%	13	14.9%	7
	100%	63	100%	61	100%	49	98%	55	100%	55	100%	47

PSAE Assessment Scores Summary Report

Due to rounding, percents may not sum to 100.

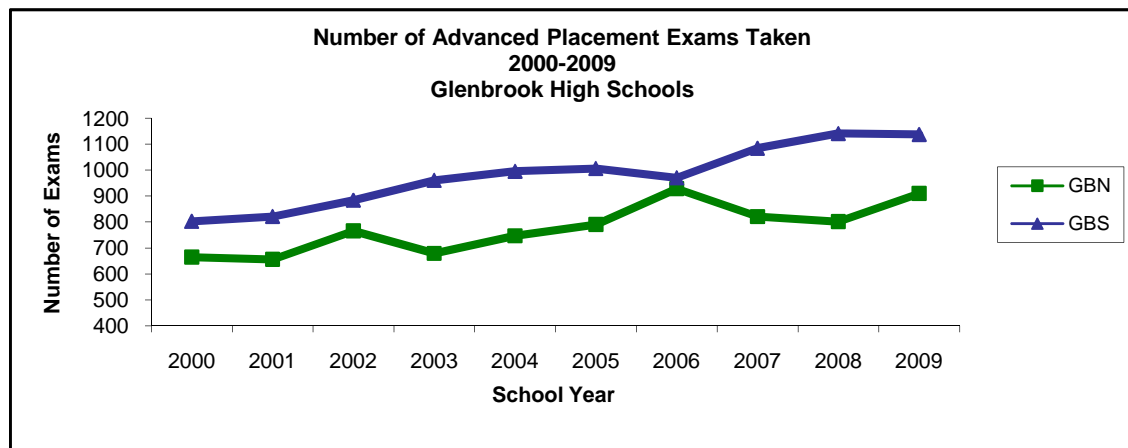


* Academic Grade Point Average (GPA) includes only those courses in the areas of English, Foreign Language, Mathematics, Science, Social Studies and Honors level courses in elective areas. Grades are weighted according to course level. The range for Academic GPA = 0.0-5.0.

	1st quartile		2nd quartile		3rd quartile		4th quartile	
	GBN	GBS	GBN	GBS	GBN	GBS	GBN	GBS
2000	4.24	4.15	3.58	3.29	2.95	2.63	2.19	1.97
2001	4.27	4.14	3.57	3.38	2.99	2.73	2.27	1.96
2002	4.30	4.20	3.58	3.23	2.99	2.66	2.24	1.99
2003	4.22	4.16	3.40	3.33	2.87	2.70	2.15	2.06
2004	4.37	4.22	3.54	3.37	2.94	2.73	2.24	2.12
2005	4.31	4.18	3.57	3.26	2.97	2.71	2.01	2.04
2006	4.28	4.11	3.49	3.30	2.96	2.75	2.05	1.96
2007	4.39	4.12	3.52	3.30	2.96	2.79	2.14	2.12
2008	4.25	4.16	3.35	3.38	3.03	2.80	2.21	2.03
2009	4.28	4.16	3.55	3.40	3.03	2.84	2.22	2.06

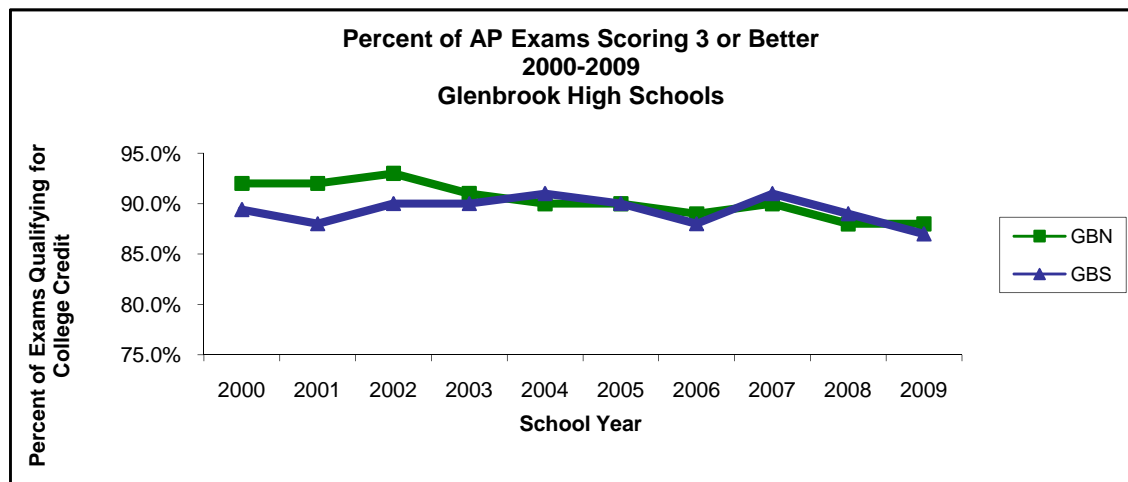
Quartile is determined by taking the total number of students, ranking the GPA, dividing the total number of student by four and taking the average GPAs of the students.

Advanced Placement Exams



Number of AP exams taken

	GBN	GBS
2000	665	803
2001	656	822
2002	766	884
2003	679	961
2004	747	996
2005	791	1007
2006	929	971
2007	821	1085
2008	802	1142
2009	910	1138



% qualified for college credit

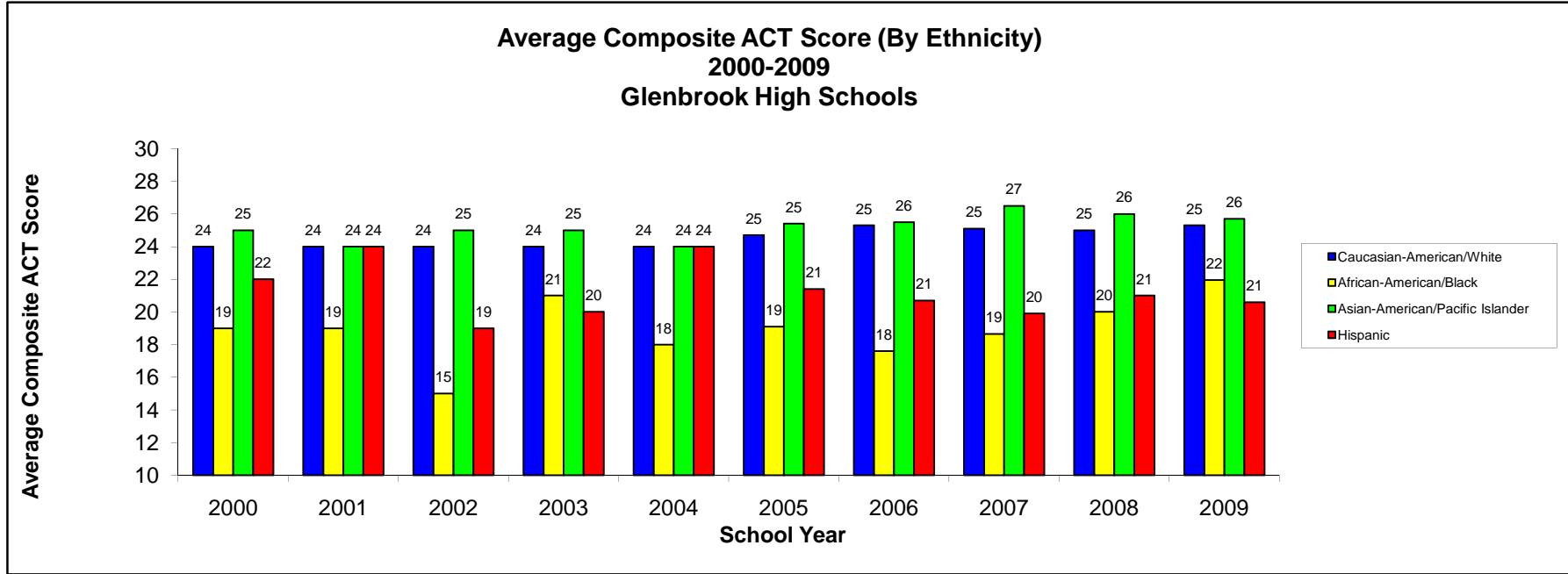
	GBN	GBS
2000	92% (612)	89% (718)
2001	92% (604)	88% (723)
2002	93% (712)	90% (792)
2003	91% (617)	90% (862)
2004	90% (675)	91% (907)
2005	90% (712)	90% (909)
2006	89% (826)	88% (855)
2007	90% (738)	91% (986)
2008	88% (704)	89% (1025)
2009	88% (795)	87% (993)

Analysis:

The number of AP exams taken has increased over the past 10 years, with approximately 90% of all students who take AP exams qualifying for college credit .

The test scores range 0-5.

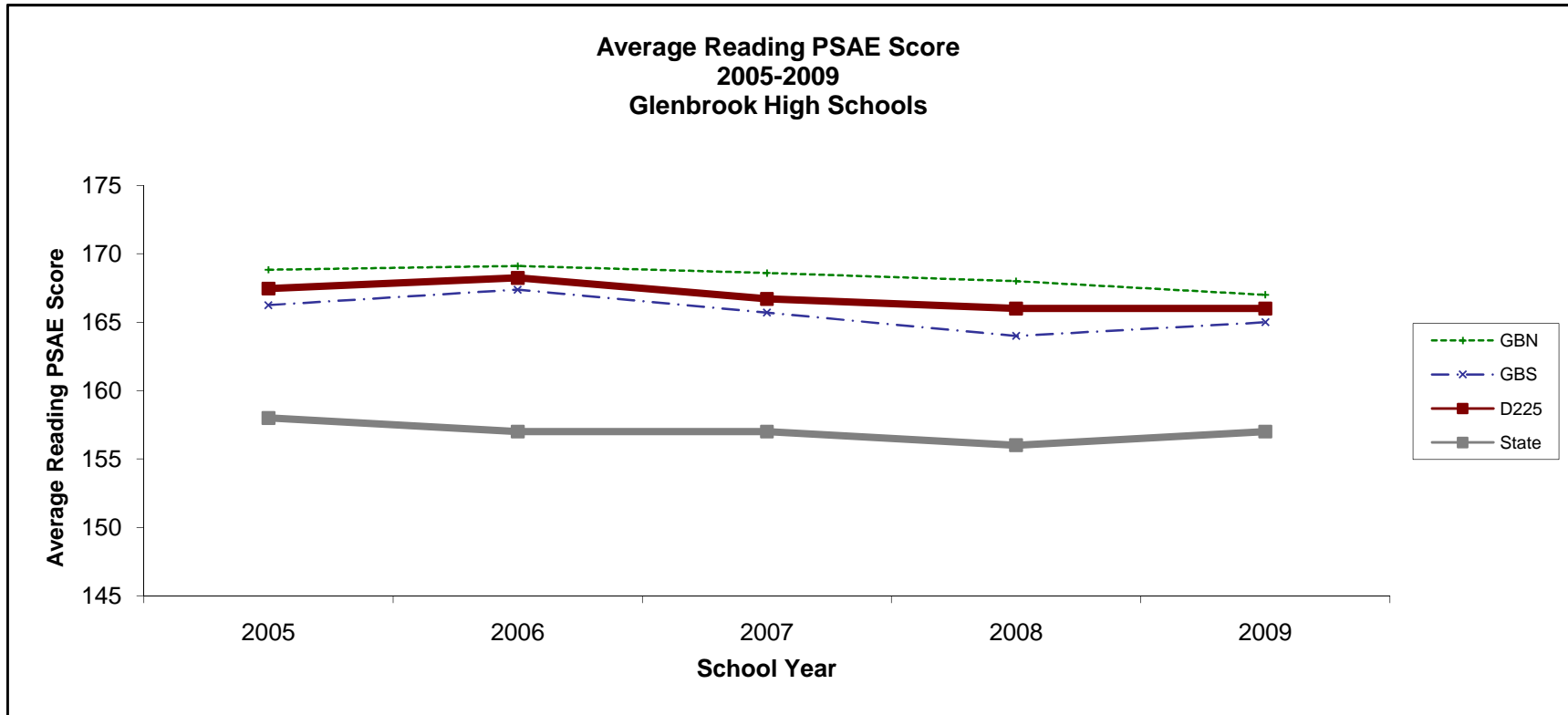
By Ethnicity



* ACT scores range 1-36. These scores include all graduating seniors who took the ACT during their sophomore, junior or senior year. If a student tested more than once, only their most recent test scores are used. There were fewer than two American Indian/Alaskan native test takers each year. Note: Starting in 2001, the ACT scores include those taken as part of the Prairie State Achievement Exam.

Average Composite ACT Score (By Ethnicity)

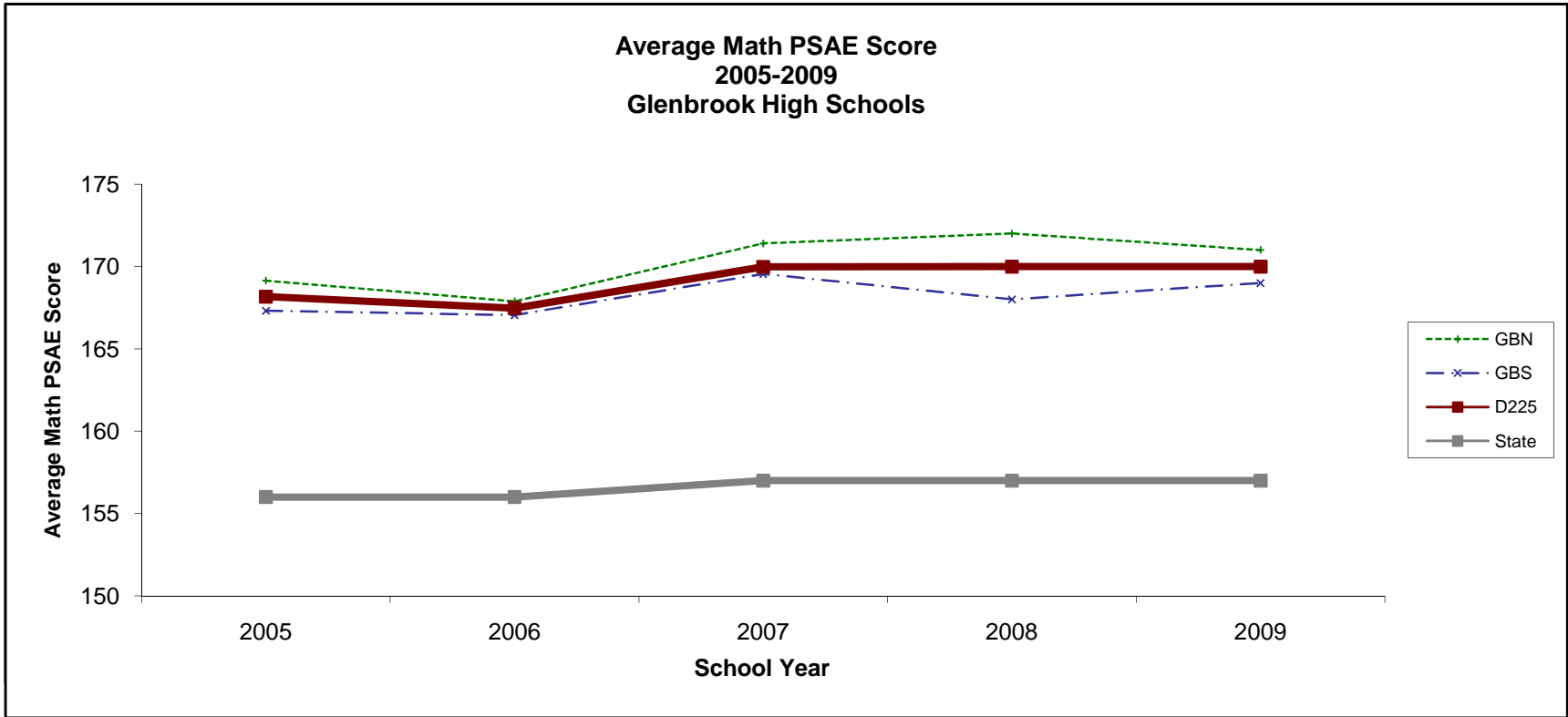
	Caucasian- American/White	African- American/Black	Asian- American/Pacific Islander	Hispanic
2000	24 (640)	19 (7)	25 (172)	22 (20)
2001	24 (608)	19 (5)	24 (85)	24 (15)
2002	24 (655)	15 (8)	25 (156)	19 (31)
2003	24 (700)	21 (13)	25 (160)	20 (33)
2004	24 (727)	18 (11)	24 (143)	24 (32)
2005	25 (691)	19 (11)	25 (175)	21 (38)
2006	25 (659)	18 (5)	26 (134)	21 (27)
2007	25 (619)	19 (13)	27 (161)	20 (44)
2008	25 (719)	20 (15)	26 (157)	21 (43)
2009	25 (710)	22 (14)	26 (163)	21 (51)



* Prairie State Achievement Exam (PSAE) is an Illinois state mandated test for all juniors beginning in 2001. PSAE Reading Scores range 120-200.

Average Reading PSAE Score

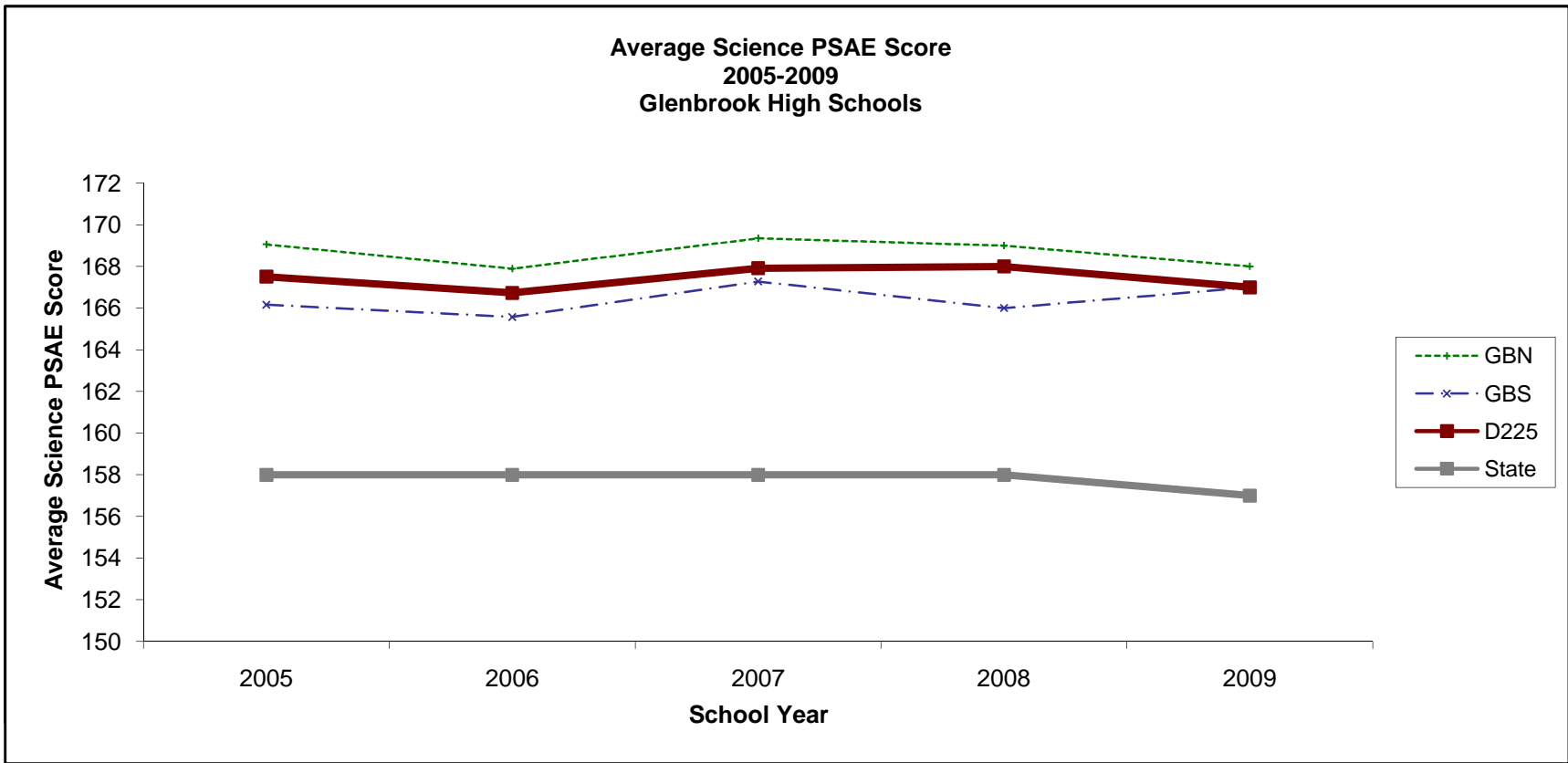
	GBN	GBS	D225	State
2005	169	166	167	158
2006	169	167	168	157
2007	169	166	167	157
2008	168	164	166	156
2009	167	165	166	157



* Prairie State Achievement Exam (PSAE) is an Illinois state mandated test for all juniors beginning in 2001. PSAE Math Scores range 120-200.

Average Math PSAE Score

	GBN	GBS	D225	State
2005	169	167	168	156
2006	168	167	167	156
2007	171	170	170	157
2008	172	168	170	157
2009	171	169	170	157

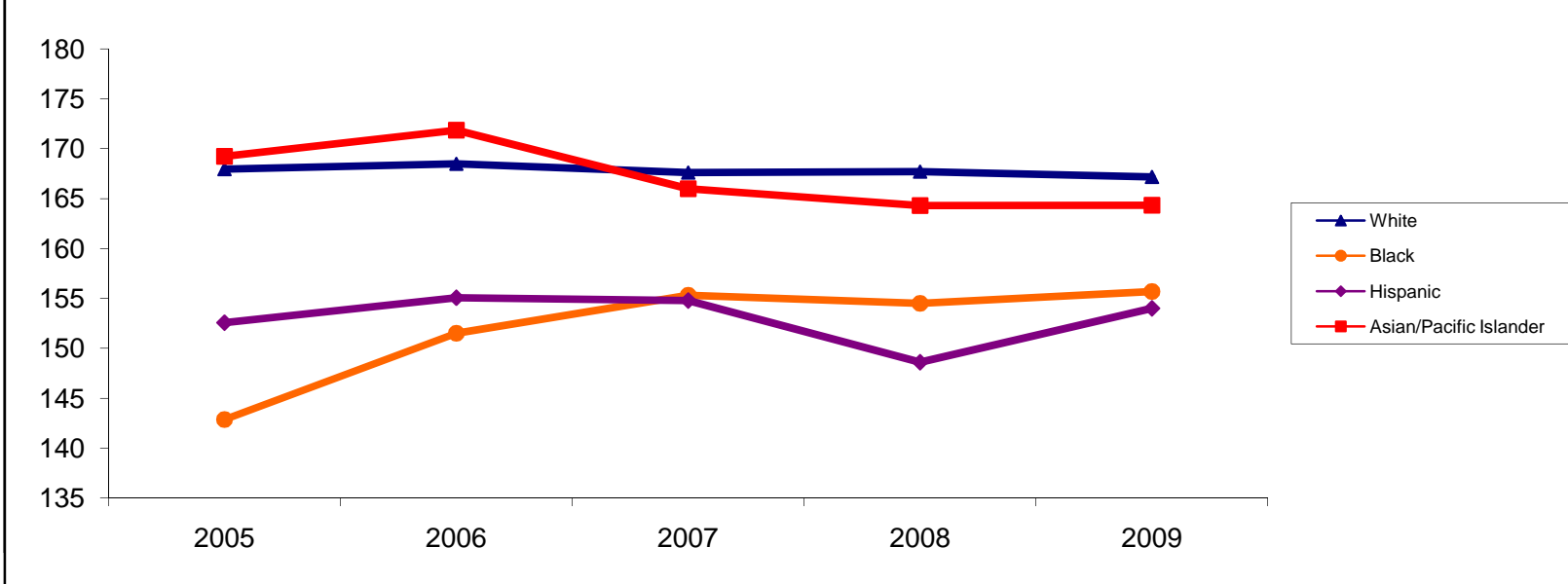


* Prairie State Achievement Exam (PSAE) is an Illinois state mandated test for all juniors beginning in 2001. PSAE Science Scores range 120-200.

Average Science PSAE Score

	GBN	GBS	D225	State
2005	169	166	168	158
2006	168	166	167	158
2007	169	167	168	158
2008	169	166	168	158
2009	168	167	167	157

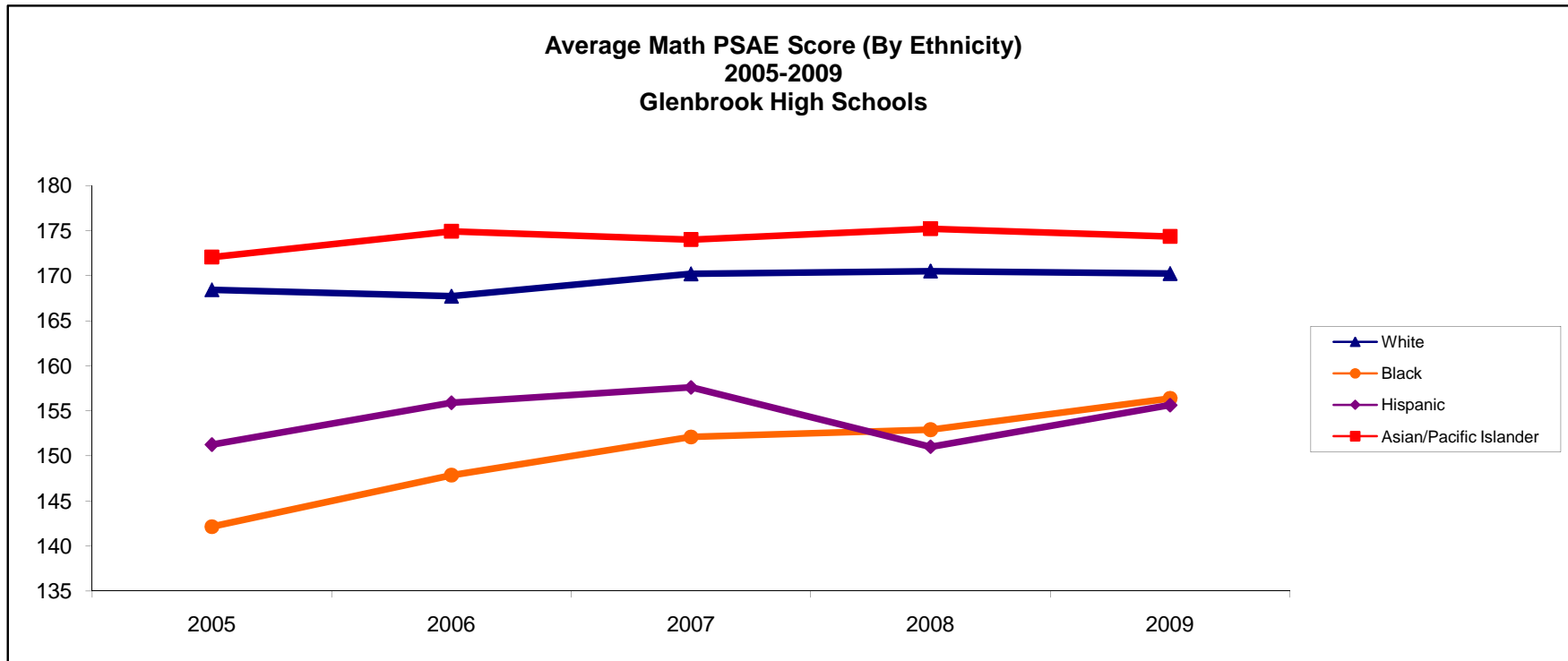
**Average Reading PSAE Score (By Ethnicity)
2005-2009
Glenbrook High Schools**



* Prairie State Achievement Exam (PSAE) is an Illinois state mandated test for all juniors beginning in 2001. PSAE Reading Scores range 120-200.

Average Reading PSAE Score (By Ethnicity)

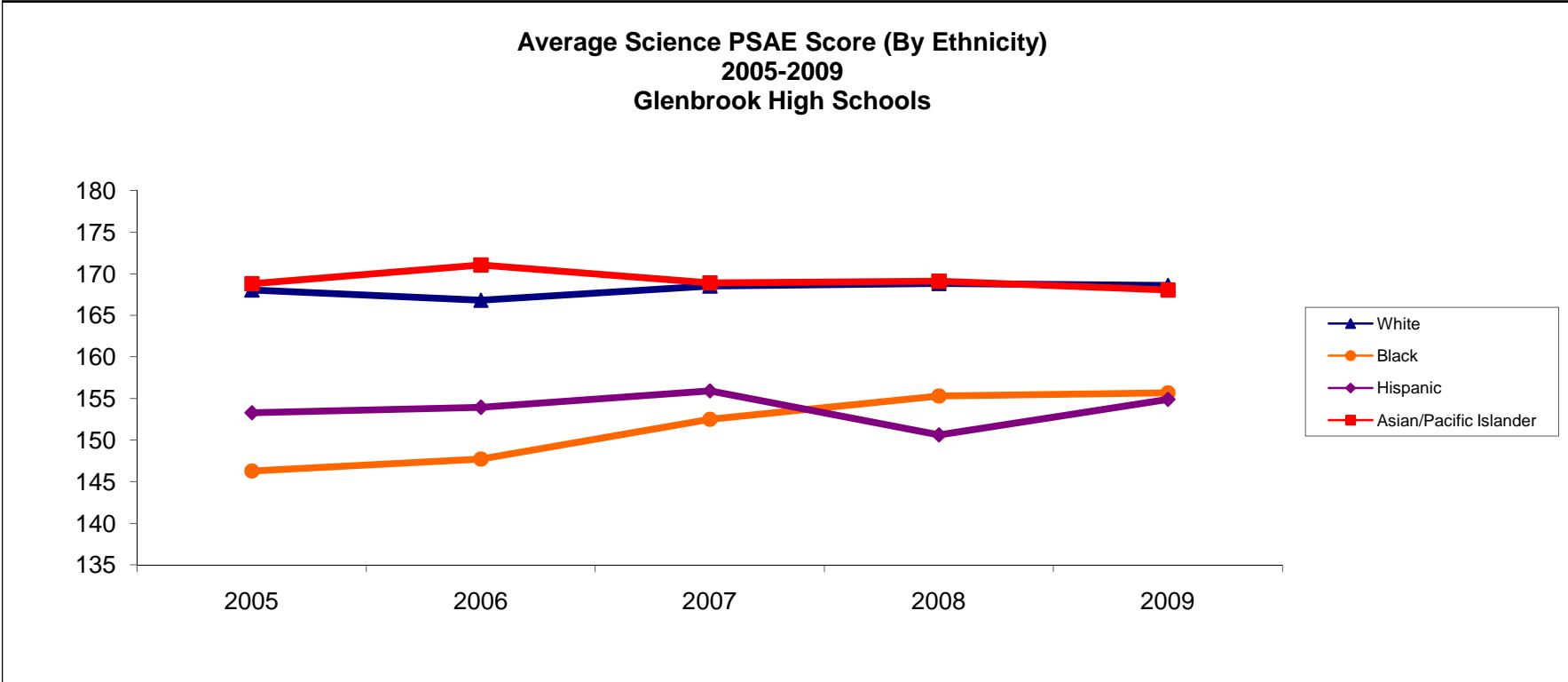
	White	Black	Hispanic	Asian/Pacific Islander
2005	168.0	142.9	152.6	169.2
2006	168.5	151.5	155.1	171.9
2007	167.6	155.3	154.8	166.0
2008	167.7	154.5	148.6	164.3
2009	167.2	155.7	154.0	164.3



* Prairie State Achievement Exam (PSAE) is an Illinois state mandated test for all juniors beginning in 2001. PSAE Math Scores range 120-200.

Average Math PSAE Score (By Ethnicity)

	White	Black	Hispanic	Asian/Pacific Islander
2005	168.4	142.1	151.2	172.1
2006	167.7	147.9	155.9	174.9
2007	170.2	152.1	157.6	174.0
2008	170.5	152.9	151.0	175.2
2009	170.2	156.4	155.6	174.4

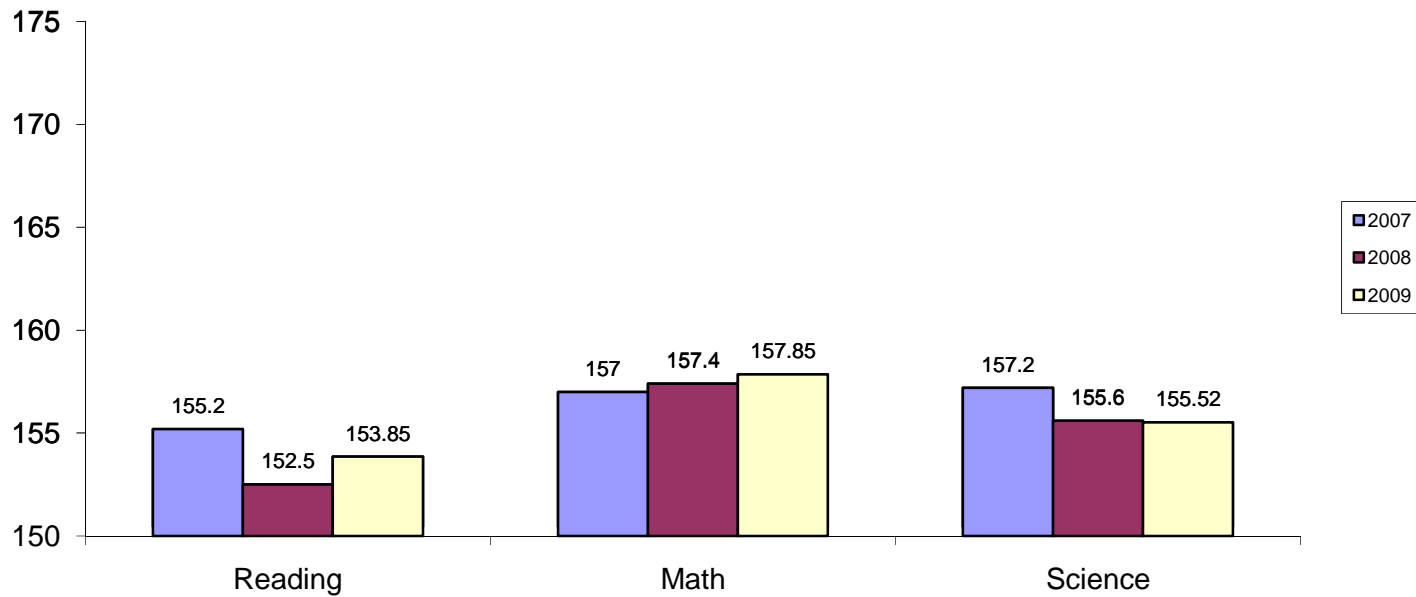


* Prairie State Achievement Exam (PSAE) is an Illinois state mandated test for all juniors beginning in 2001. PSAE Science Scores range 120-200.

Average Science PSAE Score (By Ethnicity)

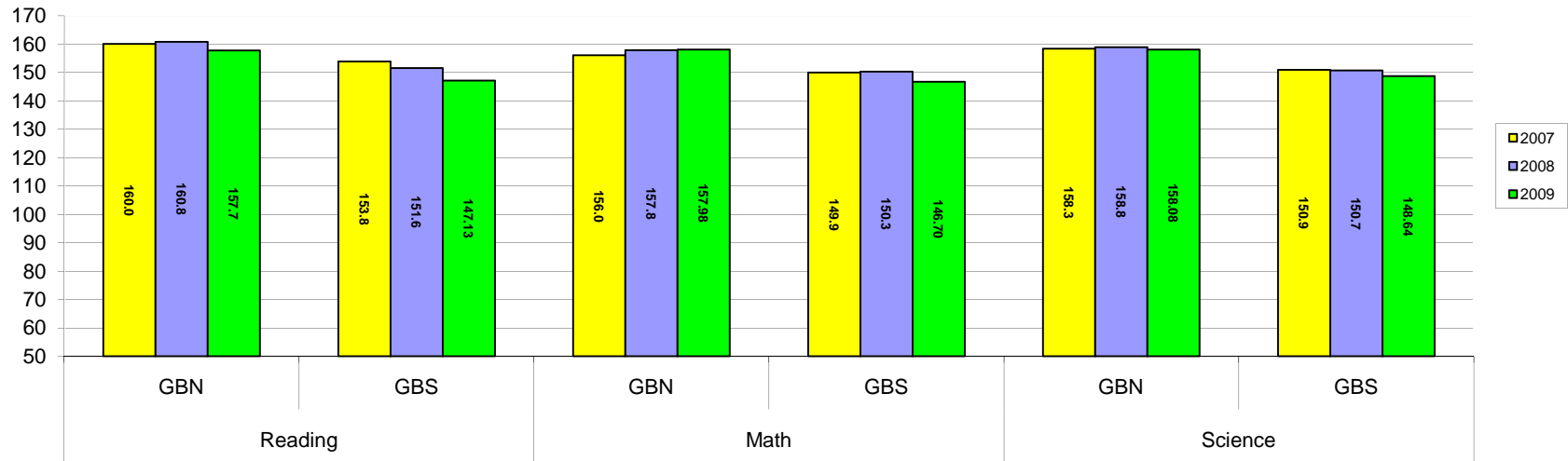
	White	Black	Hispanic	Asian/Pacific Islander
2005	168.0	146.3	153.3	168.8
2006	166.8	147.7	153.9	171.0
2007	168.5	152.5	155.9	168.9
2008	168.8	155.3	150.6	169.1
2009	168.6	155.7	154.9	168.0

**Average PSAE Scores by Subject Area (Low Income Students)
2007-2009
Glenbrook High Schools**



	2007	n	2008	n	2009	n
Reading	155.2	81	152.5	107	153.9	103
Math	157	81	157.4	107	157.9	103
Science	157.2	81	155.6	107	155.5	103

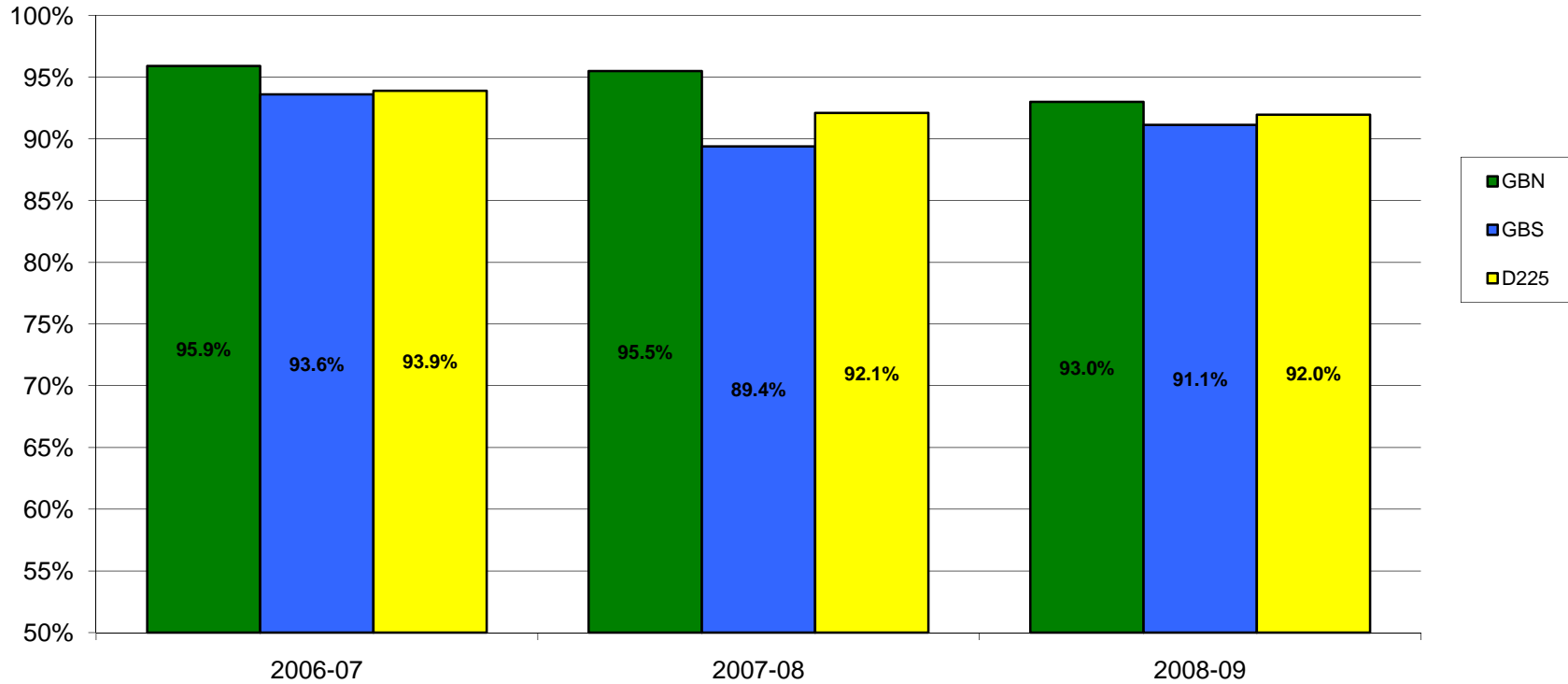
**Average PSAE Scores by Subject Area (Special Education)
2007-2009
Glenbrook High Schools**



Average PSAE Scores by Subject Area (Special Ed)

	Reading				Math				Science			
	GBN	n	GBS	n	GBN	n	GBS	n	GBN	n	GBS	n
2007	160.0	63	153.8	55	156.0	63	149.9	55	158.3	63	150.9	55
2008	160.8	61	151.6	55	157.8	61	150.3	55	158.8	61	150.7	55
2009	157.7	50	147.1	49	158.0	50	146.7	49	158.1	50	148.6	49

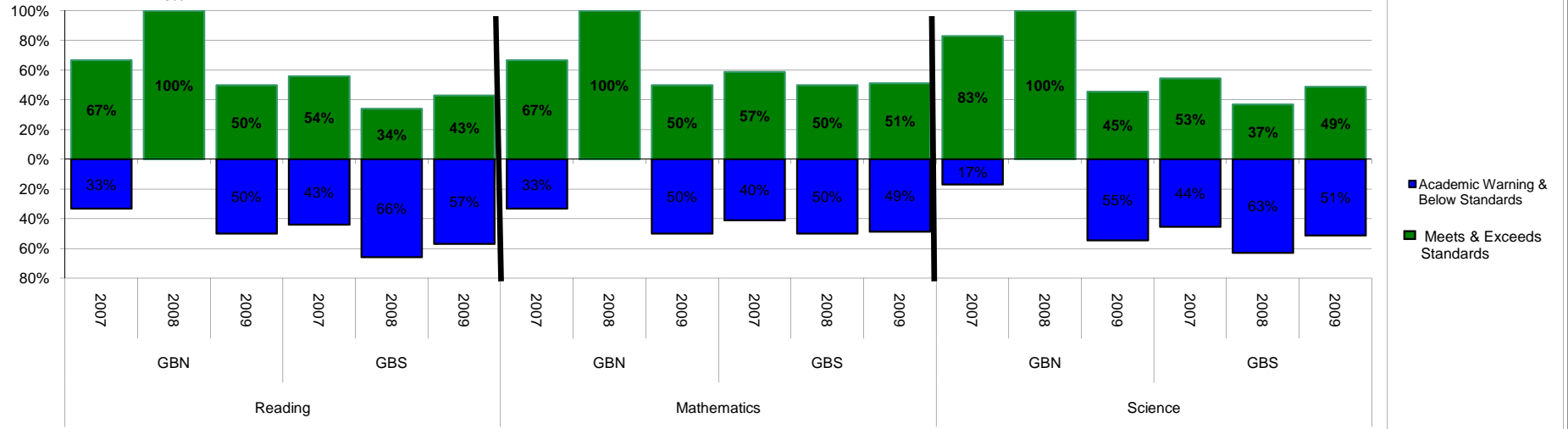
**PSAE - Percentage of Students Meeting or Exceeding in at Least One PSAE Subject Area
Glenbrook High Schools
2006-2007 to 2008-2009 School Years**



PSAE - Percent of Students Meeting or Exceeding

	GBN	GBS	D225
2006-07	95.9%	93.6%	93.9%
2007-08	95.5%	89.4%	92.1%
2008-09	93.0%	91.1%	92.0%

**2007-2009 PSAE - Low Income Students Performance Levels
Glenbrook High Schools**



	Reading										Mathematics										Science															
	GBN					GBS					GBN					GBS					GBN					GBS										
	2007	n	2008	n	2009	n	2007	n	2008	n	2009	n	2007	n	2008	n	2009	n	2007	n	2008	n	2009	n	2007	n	2008	n	2009	n						
Exceeds	*		25.0%	*	9.1%	*	8.6%	*	7.0%	*	10.1%	*	*	*	25.0%	*	9.1%	*	4.3%	*	9.0%	*	11.3%	*	16.7%	*	25.0%	*	4.5%	*	4.3%	*	7.0%	*	10.0%	*
Meets	66.7%	*	75.0%	*	40.9%	*	45.7%	32	27.0%	26	32.9%	26	66.7%	*	75.0%	*	40.9%	*	52.9%	37	41.0%	39	40.0%	32	66.7%	*	75.0%	*	40.9%	*	48.6%	34	30.0%	29	38.8%	31
Below	33.3%	*	0.0%	*	45.5%	10	35.7%	25	52.0%	50	43.0%	34	33.3%	*	0.0%	*	50.0%	1	31.4%	22	39.0%	37	42.5%	34	16.7%	*	0.0%	*	54.5%	12	37.1%	26	48.0%	46	40.0%	32
Academic Warning	*		0.0%	*	4.5%	*	7.1%	*	14.0%	13	13.9%	11	*	*	0.0%	*	0.0%	0	8.6%	*	11.0%	11	6.3%	*	-11.0%	*	0.0%	*	0.0%	*	7.1%	*	15.0%	14	11.3%	*

* Indicates there are less than 10 students in at least one or both of the schools in the district.