

**GLENBROOK HIGH SCHOOLS  
District Business Office**

**TO: Dr. Riggle  
Hillarie Siena**

**FROM: Kimberly L. Ptak**

**DATE: August 13, 2012**

**RE: Discussion/Action: Paving and Fencing Projects**

Recommendation

It is recommended that the Board of Education approve \$459,600 for paving, paths and fencing work for the summer of 2013.

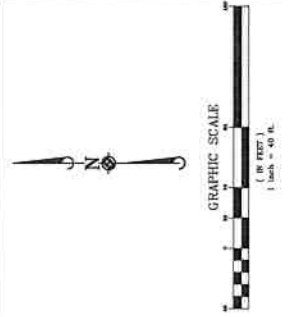
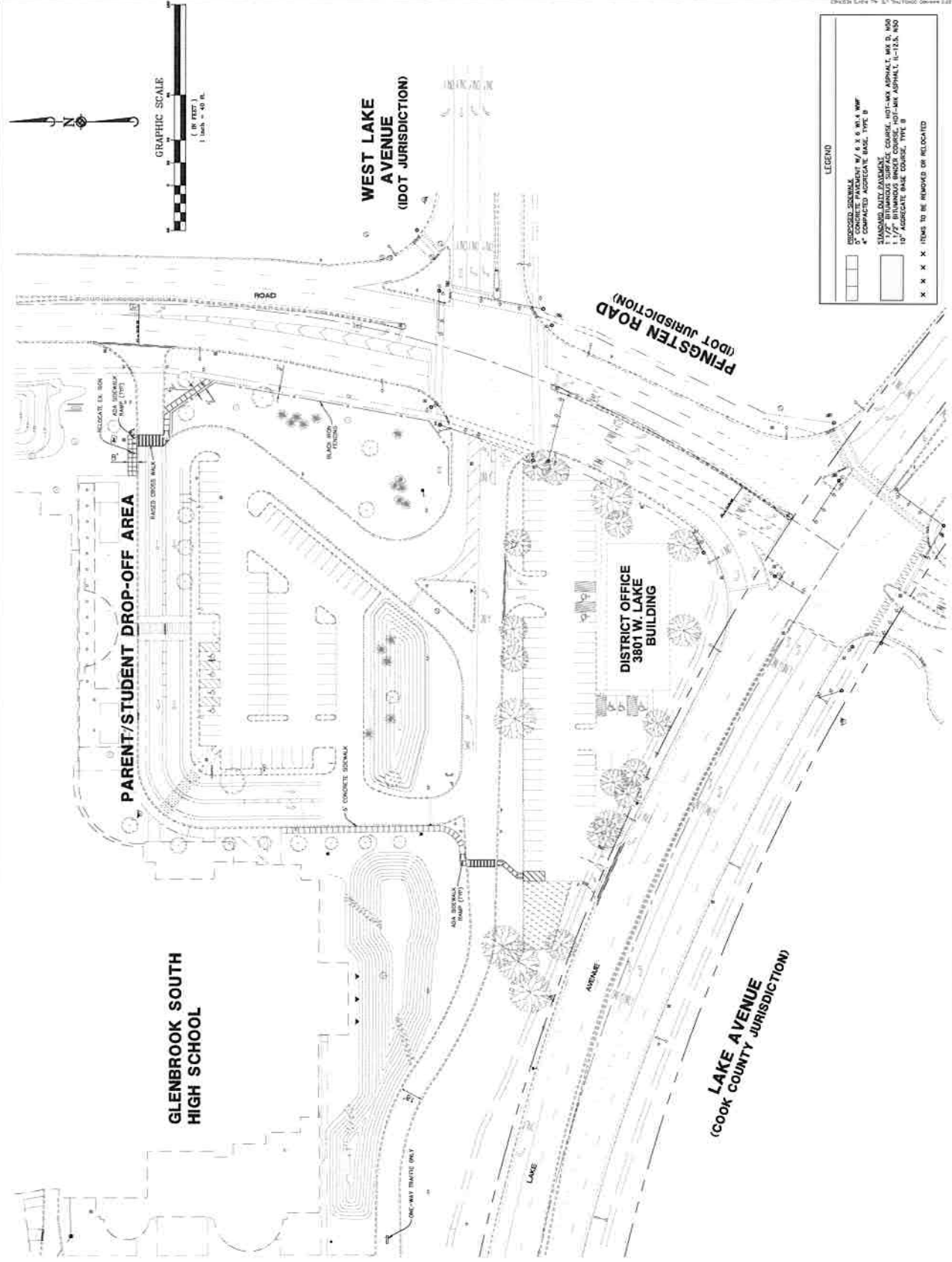
Background

ARCON performed a review of all lots, concrete paths and fencing at all Glenbrook locations. The majority of lots are in good condition and can last the next five years with seal coating and patching. The following areas are recommended for work the summer of 2013.

<b><u>GLENBROOK NORTH FENCING</u></b>	
Area GG: Parking lot AA fencing replacement	\$8,000
Area HH: Replacement of football field perimeter fencing (2,270 LF)	\$100,000
Area JJ: Replacement of track perimeter fencing	\$40,000
<b><u>GLENBROOK SOUTH PAVING &amp; CONCRETE</u></b>	
Area G: Drive North to Hospital Road sealcoat	\$10,000
Areas H&J: Sealcoat areas east and south of Lacrosse Field	\$15,000
Area MM: Sidewalk and Fencing to Main Entrance (sketch attached)	\$40,000
Area NN: Sidewalk from District Office to GBS (sketch attached)	\$10,000
Area LL: Three Lane Egress to Pfingsten Ave (sketch attached)	\$100,000*
<b><u>GLENBROOK SOUTH FENCING</u></b>	
Area GG: Replace Football field perimeter fencing (1,700 LF)	\$60,000
<b>TOTAL:</b>	<b>\$383,000</b>
<b>TOTAL with Fees &amp; Contingencies</b>	<b>\$459,600</b>

\* Additional cost estimate data will be shared with the Board in the November time-frame, prior to bidding. Depending on conversations with the Illinois Department of Transportation (IDOT), this number could range from \$30,000 - \$150,000.

DATE	DESCRIPTION



**LEGEND**

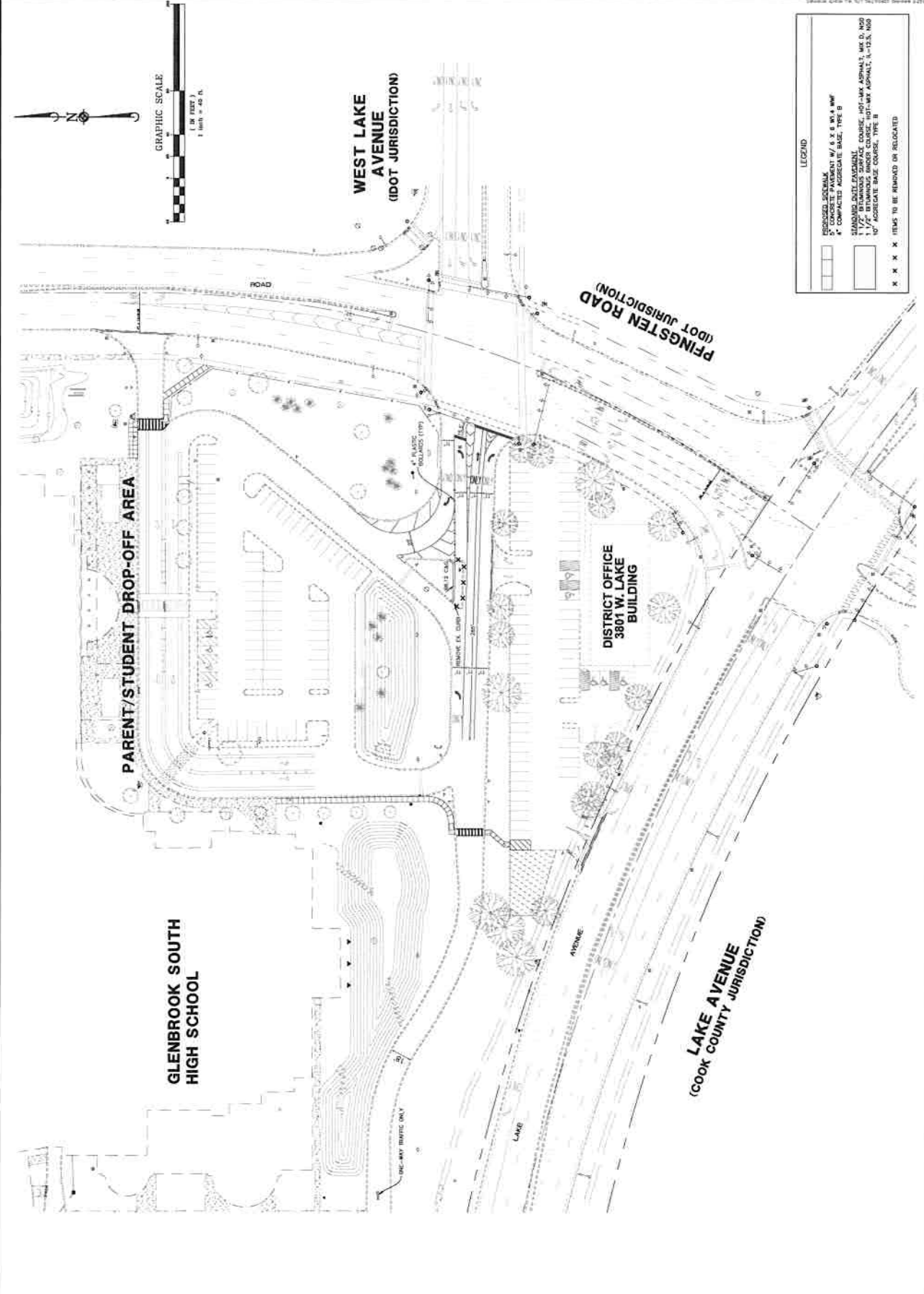
[Symbol]	DESIGNED SIDEWALK
[Symbol]	6" CONCRETE PAVEMENT W/ 4" X 6 W x 8 WWF
[Symbol]	4" COMPACTED AGGREGATE BASE, TYPE B
[Symbol]	STANDARD DUTY GRANULAR COURSE, HOT-LAY ASPHALT, 1 1/2" AND
[Symbol]	1 1/2" BITUMINOUS BINDER COURSE, HOT-LAY ASPHALT, 1 1/2" AND
[Symbol]	10" AGGREGATE BASE COURSE, TYPE B
[Symbol]	ITEMS TO BE REMOVED OR RELOCATED

DATE	DESCRIPTION
12-17-13	REVISED FOR THE CONTRACT
12-17-13	REVISED FOR THE CONTRACT
12-17-13	REVISED FOR THE CONTRACT
12-17-13	REVISED FOR THE CONTRACT
12-17-13	REVISED FOR THE CONTRACT
12-17-13	REVISED FOR THE CONTRACT
12-17-13	REVISED FOR THE CONTRACT
12-17-13	REVISED FOR THE CONTRACT
12-17-13	REVISED FOR THE CONTRACT

**Manhard CONSULTING LTD.**  
 300 West Park Drive, Suite 100, Oak Brook, IL 60110  
 (708) 571-1000  
 Fax: (708) 571-1001  
 www.manhard.com

**GLENBROOK SOUTH HIGH SCHOOL**  
**GLENVIEW, ILLINOIS**  
**CONCEPTUAL PLAN - PHASE 2**

DATE: 12-17-13  
 DRAWN BY: JRM  
 CHECKED BY: JRM  
 SCALE: AS SHOWN  
 SHEET: 20F3  
 PROJECT: GLENBROOK SOUTH HIGH SCHOOL



**LEGEND**

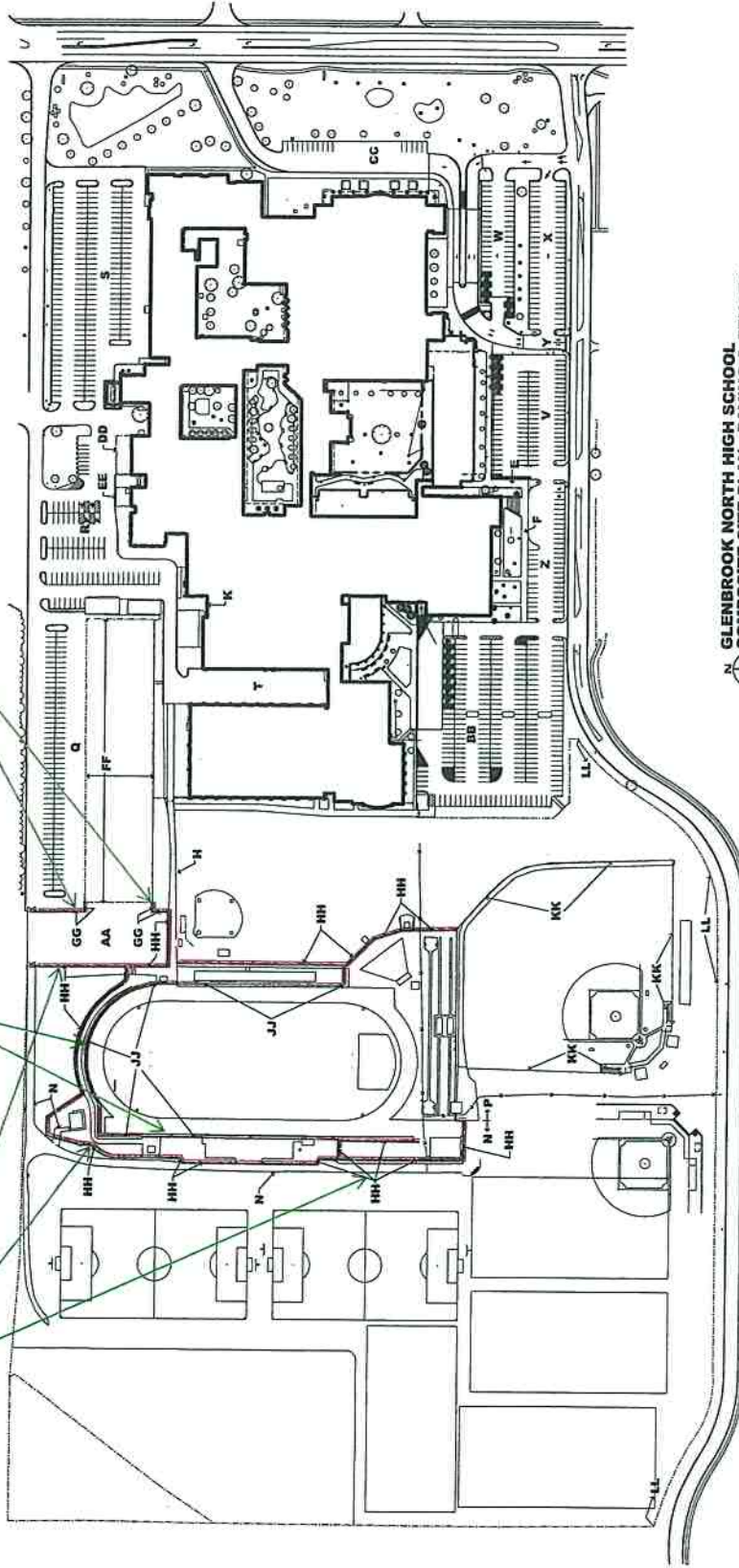
[Symbol]	PROPOSED SIDEWALK
[Symbol]	4" CONCRETE PAVEMENT W/ 1/2" X 1/2" X 1/2" W/F
[Symbol]	4" COMPACTED AGGREGATE BASE, TYPE B
[Symbol]	2" OPEN GRANULAR SUBGRADE
[Symbol]	2" OPEN GRANULAR SUBGRADE COURSE, HOT-MIX ASPHALT, 1 1/2" S, MOD
[Symbol]	1 1/2" BITUMINOUS BINDER COURSE, HOT-MIX ASPHALT, 1 1/2" S, MOD
[Symbol]	1" AGGREGATE BASE COURSE, TYPE B

X X X X X ITEMS TO BE REMOVED OR RELOCATED

**FENCING WORK for AREA HH:**  
REPLACEMENT OF FOOTBALL  
FIELD PERIMETER FENCING  
(2,270 LF)

**FENCING WORK for AREA JJ:**  
REPLACEMENT OF TRACK  
PERIMETER FENCING

**FENCING WORK for AREA GG:**  
PARKING LOT 'A' FENCING  
REPLACEMENT



**GLENBROOK NORTH HIGH SCHOOL  
COMPOSITE SITE PLAN - PAVING & FENCES**



**FENCING WORK for AREA GG:**  
 REPLACEMENT OF FOOTBALL  
 FIELD PERIMETER FENCING  
 (1,700 LF)

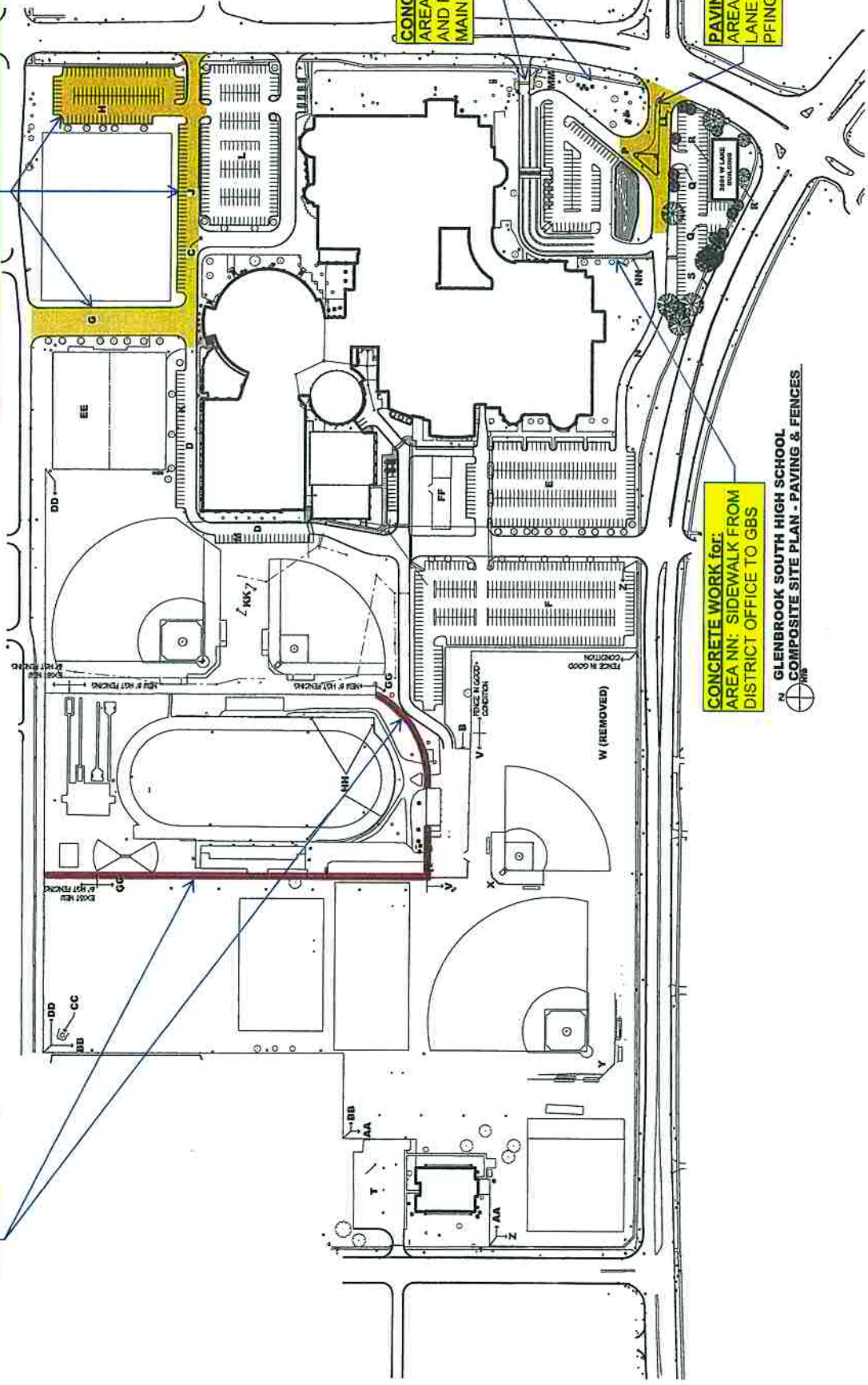
**PAVING WORK for:**  
 AREA G: SEALCOAT NORTH DRIVE TO HOSPITAL ROAD.  
 AREA H & J: SEALCOAT AREAS EAST AND SOUTH OF  
 LACROSSE FIELD.

**CONCRETE WORK for:**  
 AREA MM: SIDEWALK  
 AND FENCING TO  
 MAIN ENTRANCE

**PAVING WORK for:**  
 AREA LL: THREE  
 LANE EGRESS TO  
 PFINGSTEN AVE.

**CONCRETE WORK for:**  
 AREA NN: SIDEWALK FROM  
 DISTRICT OFFICE TO GBS

**GLENBROOK SOUTH HIGH SCHOOL  
 COMPOSITE SITE PLAN - PAVING & FENCES**



SUMMER 2013 WORK  
 As of July 27, 2012

**GLENBROOK HIGH SCHOOL DISTRICT 225**  
 Glenbrook South High School - Paving and Fences Plan

