

Learning Plan for 2020-21

Status Update

July 13, 2020

Guidance from State Agencies

Preparing for the 2020-21 School Year

The Illinois State Board of Education (ISBE) issued guidance on June 23, 2020 to support local school districts in preparing for the 2020-21 school year. This guidance has been updated several times through the issuance of Frequently Asked Question documents. ISBE's guidance provides the required framework for public schools. Within that framework, there is local control.



Illinois
State Board of
Education



RESTORE ILLINOIS

A Public Health Approach To Safely Reopen Our State

Phase 1 Rapid Spread	Phase 2 Flattening	Phase 3 Recovery	Phase 4 Revitalization	Phase 5 Illinois Restored
<p>Strict stay at home and social distancing guidelines are put in place, and only essential businesses remain open.</p> <p>Every region has experienced this phase once already and could return to it if mitigation efforts are unsuccessful.</p>	<p>Non-essential retail stores reopen for curb-side pickup and delivery.</p> <p>Illinoisans are directed to wear a face covering when outside the home and can begin enjoying additional outdoor activities like golf, boating & fishing while practicing social distancing.</p>	<p>Manufacturing, offices, retail, barbershops and salons can reopen to the public with capacity and other limits and safety precautions.</p> <p>Gatherings of 10 people or fewer are allowed.</p> <p>Face coverings and social distancing are the norm.</p>	<p>Gatherings of 50 people or fewer are allowed, restaurants and bars reopen, travel resumes, child care and schools reopen under guidance from the Illinois Department of Public Health.</p> <p>Face coverings and social distancing are the norm.</p>	<p>The economy fully reopens with safety precautions continuing.</p> <p>Conventions, festivals and large events are permitted, and all businesses, schools and places of recreation can open with new safety guidance and procedures.</p>

ISBE Guidance Theme

“This fall will not be business as usual, and we will update our guidance as needed in response to changing public health conditions. All schools and districts must be prepared to return to remote learning if the virus surges again.”

ISBE Guidance Theme

“In-person instruction is strongly encouraged in Phase 4; however, it is critical to note that this does not signify a return to pre-pandemic operations.”

ISBE Guidance

General Requirements

Require use of appropriate personal protective equipment (PPE), including face coverings:

- All individuals in school buildings...must wear face coverings AT ALL TIMES; unless they are younger than 2 years of age; have trouble breathing; or are unconscious, incapacitated, or otherwise unable to remove the cover without assistance.
- Face coverings must be worn at all times in school buildings, even when social distancing is maintained.
- Face coverings do not need to be worn outside if social distancing is maintained.
- Schools should require physicians notes for students and staff who are not able to wear a face covering due to exceptions listed above.
- Districts need to update policies to reflect requirements to wear masks.

ISBE Guidance

General Requirements

- Prohibit more than 50 individuals from gathering in one place.
 - Room, portions of a hallway, etc.
 - Outside - A 30 foot gap between groups of people differentiate spaces.
- Require 6 feet social distancing be observed, as much as possible.
 - Room arrangements must be considered.
 - Scheduling should be adjusted to minimize congregation.
- Require that schools conduct symptom screenings and temperature checks or require that individuals self-certify that they are free of symptoms before entering the school buildings.
 - Verification of symptom screenings.

ISBE Guidance

General Requirements

- Require an increase in schoolwide cleaning and disinfection.
- School districts “adopt a Remote Learning and Blended Learning Day Plan approved by the district superintendent”.
 - Must get a formal e-Learning plan approved. This includes collaboration with the union, a public hearing and Board approval.
- E-Learning/Remote Learning Plans.
 - Must have 5 clock hours that incorporate a combination of instruction and school work for each student. More guidelines are coming.
 - Grades count.
 - Attendance counts; must take attendance and gauge engagement.
- Districts allocated up to five Remote and Blended Learning Planning Days.

ISBE Guidance

Course Specific Requirements

- **Music/Band**
 - No sharing of equipment.
 - Conductors more than 10 feet away or behind plexi screen.
 - Consider outdoor rehearsals
- **Physical Education**
 - Students should not change in locker rooms.
 - Activities must allow for six foot space/no more than 50 students in a space.
 - Activities that require close guarding or physical contact must be avoided.
 - Shared equipment is not recommended. If equipment is shared, it must be cleaned between each student use and disinfected at the end of each class.
 - Hand hygiene should be performed at the start and end of each class.
- **CTE and Fine Arts**
 - Gloves should be provided.
 - No sharing of food in FACS - discuss with local health department.

ISBE Guidance

Students with Disabilities

- ISBE encourages districts to provide special populations, which may include students with Individualized Education Programs (IEPs), English Learners, and those who received incompletes during remote instruction, with priority consideration for in-person services.
- **Social Distancing**
 - Special education classrooms are required to follow social distancing requirements.
 - PPE may be worn by staff and students when providing physical support.
 - Consideration to social and emotional needs of students with disabilities (transitions, understanding social boundaries/personal space, counseling).

ISBE Guidance

Students with Disabilities

- **Personal Protective Equipment**

- Consideration should be given to the impact of protective face coverings on students who suffer from a respiratory disease, sensory processing sensitivity, and/or expel bodily fluids orally.
- Students with disabilities who are unable or refuse to wear a face covering may be provided reasonable accommodations per the Americans with Disabilities Act.
- Consideration should be given to the impact that staff wearing protective face coverings may have on students with disabilities (e.g. students with hearing impairments).
- Consideration must be addressed so that students and staff members understand and normalize that some persons may not be wearing a face covering.

ISBE Guidance

Students with Disabilities

- Students who are medically-fragile or immunocompromised
 - If in-person instruction would place a student at higher risk, the IEP Team may consider alternative placement options such as continuing the implementation of remote learning, a hybrid, etc.
- It is recommended that districts and other serving entities consult with their local health department and legal counsel when resuming off campus transition services.
- Students placed in private special education schools remain the responsibility of their resident district.
 - The district will remain responsible for provision of educational services to the student, including transportation.

ISBE Guidance

Other Guidance

- Back-to-School Events
 - Schools are strongly encouraged to hold events (back-to-school nights, open houses, conferences, etc) remotely
- Limit non-essential visitors to the building
- Develop health and safety protocols
 - Hand hygiene
 - Building sanitation schedule
 - Protocols for when students get ill
 - Isolation rooms for sick students
 - Limit shared objects
 - Limit locker usage
 - Safety drills

ISBE Guidance

Other Guidance

- Transportation
 - Students must wear masks on buses
 - Students must undergo a symptom and temperature checks, which may include self certification
 - No more than 50 individuals allowed on a bus at one time
- Other
 - Spacing/plexi in bathrooms
 - Must use water bottles/cups in drinking fountains
 - Food must be “grab and go” style. No buffet options
 - Offices and teachers lounge must adhere to social distancing

ISBE Guidance

Other Guidance

- Plans could change as circumstances and directives/guidance from ISBE, IDPH, or the Governor's Office dictate.
- We must respect and honor our collective bargaining agreements.
- We must adhere to Special Education requirements
- We need to recognize that this public health emergency has impacted EVERY person in our community--but the needs and mindsets are all different. We need to respect these differences.
- We need to be mindful that plans developed by workplaces and other school districts where our staff lives impacts our plan development.
- Sourcing PPE and other equipment and supplies is difficult.
- Students will have gaps in learning that need to be accommodated.
- Social emotional supports are essentials.
- Schedules, routines, and time may need to be adjusted to accommodate social distancing.

Stakeholder Feedback

Feedback from Parents and Students Return to School Survey

In an effort to inform our plans for the 2020-2021 school year, we ask that you complete the following survey. Your response is not a commitment to a particular plan for your child(ren); instead, we are trying to get a general sense of how each family plans to approach the new school year, given the global pandemic. Please complete the survey one time per household, even if you have multiple children attending high school. Thank you for completing this survey as soon as possible, but no later than July 9, 2020.

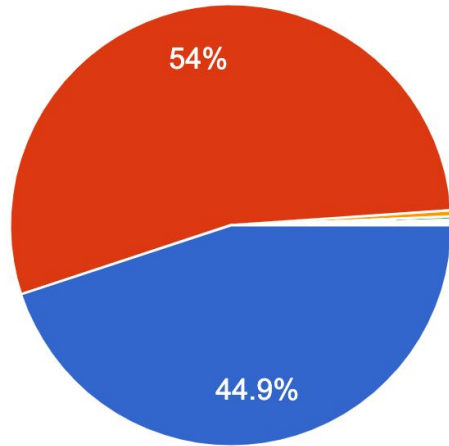
The Illinois State Board of Education has mandated that all staff and students wear face masks while in the school building (face shields are not permitted). Face masks do not need to be worn outside when physical distancing is possible, and face masks do not need to be worn when eating if physical distancing is maintained. Daily certification of students and staff being symptom-free is another required measure. Understanding these guidelines for attendance, please select the choice that best reflects your plans for the upcoming school year. *

- Our family understands the safety measures required and we will send our student to school for in-person learning if that option is available.
- Our family will not be sending our student to school in-person due to a student health concern or a health concern of someone living in the home. We understand this means our student will participate in e-learning from home.
- Our family will not be sending our student to school in-person due to other personal reasons. We understand this means our student will participate in e-learning from home.
- Other: _____

Feedback from Parents and Students Return to School Survey

Where will your student(s) attend?

6,442 responses

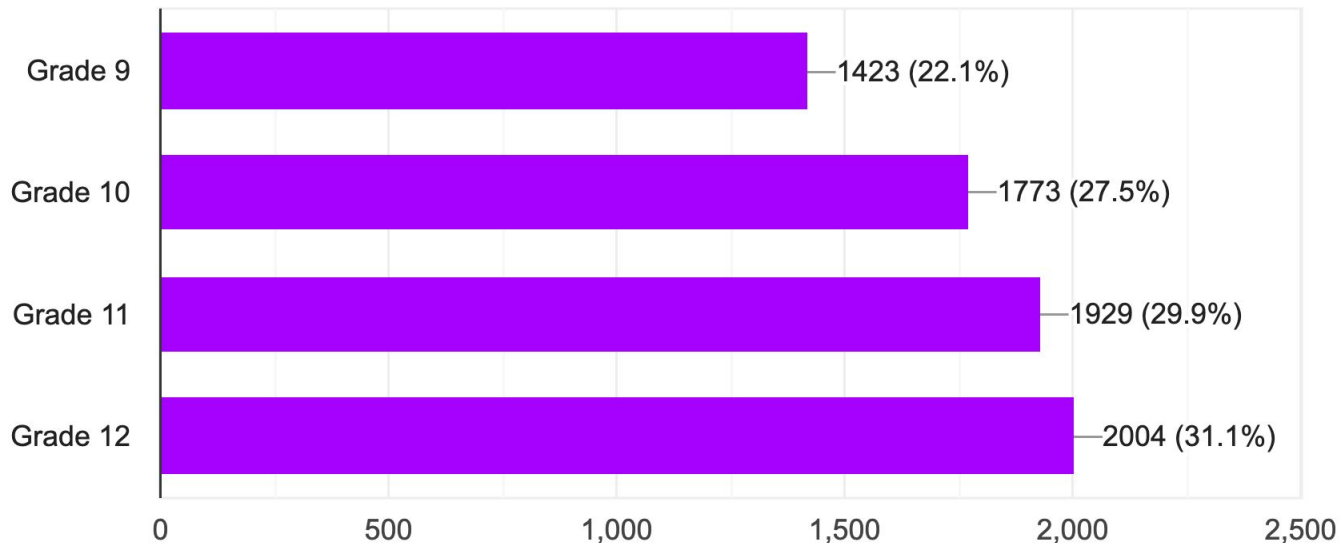


- Glenbrook North
- Glenbrook South
- Glenbrook Off Campus
- Glenbrook Transition Services
- GBN for the most part. GBS for one cl...
- Connections Academy East
- Home school b an accredited program
- The Cove School

Feedback from Parents and Students Return to School Survey

What grade is your student entering this fall? Check all that apply for your family.

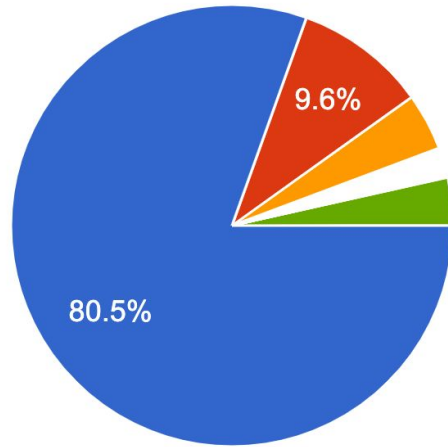
6,442 responses



Feedback from Parents and Students Return to School Survey

The Illinois State Board of Education has mandated that all staff and students wear face masks while in the school building (face shields are not p...t reflects your plans for the upcoming school year.

6,442 responses



- Our family understands the safety me...
- Our family will not be sending our stud...
- Our family will not be sending our stud...
- If the school opens May do rotations a...
- I have not made a final decision as I w...
- Because of the mandates of wearing...
- If the requirements will be mandatory...
- Undecided.

Feedback from Parents and Students

Professional Development Workshops

Through the summer our instructional coaches and teachers leaders have facilitated workshops to “dig into topics that staff indicated are of high interest”, in preparation for the 2020-21 school year. Workshops included discussions on best practices and strategies from leading researchers and universities divided into four categories: engaging instruction, content, assessment, and community. Many sessions included over 120 teachers, and sessions were also recorded and made available to view at any time by those that were not able to attend.

Asynchronous Classroom Discussions	Creating a Sense of Belonging in the E-Learning Environment	Formative Assessment and Feedback in a Synchronous Lesson	Formative Assessment and Feedback in an Asynchronous Lesson	Supporting Students to be Successful E-Learners	Synchronous Classroom Discussions	Developing Expectations in the E-Learning Environment	Grand Total
106	71	94	84	128	137	88	708

Approximately 10 additional sessions are schedule during the remainder of the summer

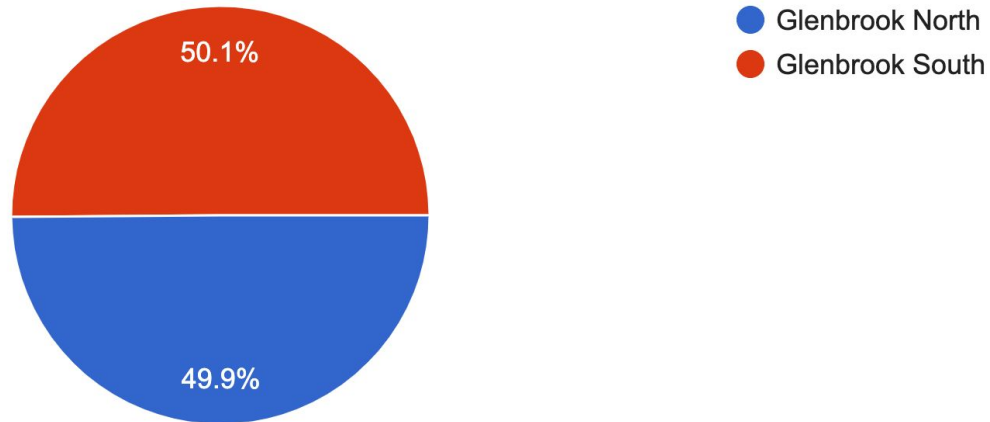
Feedback from Parents and Students

Parent Focus Groups

Please fill out this form to express your interest in participating in the Parent Focus Groups to be scheduled between July 13 - 22.

I am a parent of a student at:

429 responses

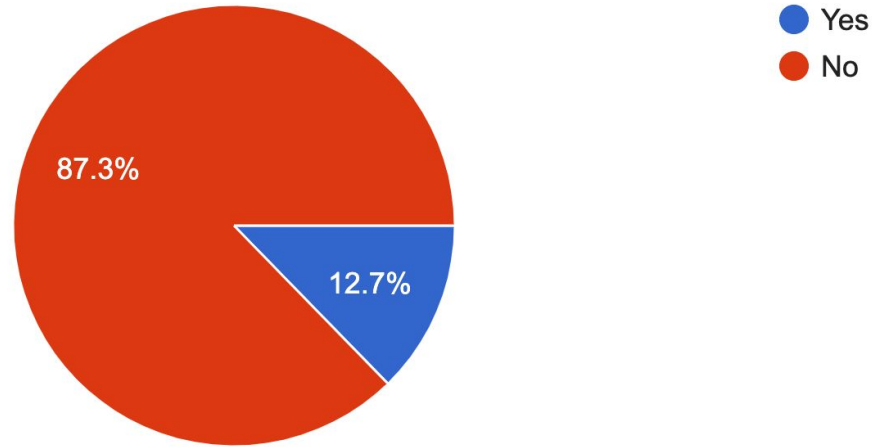


Feedback from Parents and Students

Parent Focus Groups

I am a parent of a student with special needs and would also like to participate in a disability-specific focus group.

401 responses



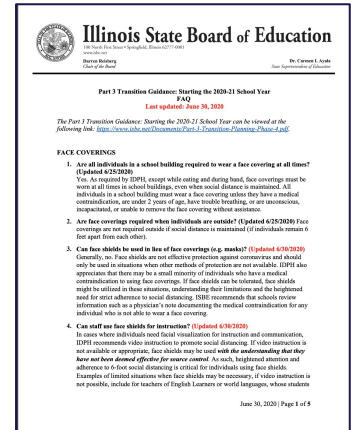
Continuing to Evaluate Options

Options Under Consideration

As the district continues to gather feedback from stakeholders regarding the 2020-21 learning plan, the operations team has been planning the following scenarios:

- A full return to school for all students;
- A hybrid model where the student population is divided into two groups, for example:
 - Hybrid Model 1: 50% of each school's enrollment attends class for two consecutive days from 8:00 AM - 3:15 PM, while the other group remotely attends class through Zoom from home;
 - Hybrid Model 2: 50% of each school's enrollment attends from 8:00 AM - 11:10 AM, while the other group remotely attends class through Zoom from home. A lunch break takes place between 11:15 AM and 12:15 PM. After the lunch break, the group that was at home attends class in school from 12:15 PM - 3:25 PM, while the other group remotely attends class through Zoom from home; or
- A gradual return model where e-learning serves as the primary form of instruction, with small groups of students receiving in-person services based on need.

Each model is being carefully considered based on the most recent guidance from ISBE and IDPH.



Wellness Considerations

Student Wellness

Social Emotional Learning Curriculum (Tier 1 - all students)

- GBS/GBN committee created 4 - 6 week curriculum to be delivered within PE classes
- Counselors, Psychologists, and Social Workers co-teach lessons with PE/Health teachers
- Topics include
 - Creating a Collective Community
 - Building Resiliency
 - Coping with Anxiety, Fears and Stress
 - Accessing Resources and Supports
- Exit Slip to determine students needing additional support
- Review feedback and determine what lessons plans should be offered in future weeks

Counseling Support (Tier 2 - identified students)

- Community agency to provide office hours for individual, virtual tele-therapy sessions
- Virtual Drop-In Center staffed by clinical team members
- Group and Individual counseling based on identified needs (i.e., anxiety, grief, trauma, etc.)
- Crisis management (i.e., health/safety assessments, threat assessments, etc.)

Weekly Problem Solving Meetings with Counselors, Psychologists, Social Workers and Deans

- Identify students displaying academic and/or social emotional concerns

Webinar Series for Parents/Students

- Coping with COVID-19, 3-part series (Strategies for Summer, The Return to School, Moving Forward with Meaning)

Staff Wellness

Therapeutic Support Groups for Staff

- Co-facilitated by community agency and GBS/GBN clinical team members
- Prior to the start and during the first two weeks of the school year
- Provide support as we transition into the 20-21 school year

Pre-Recorded Webinar for all Staff to View on Glenbrook Day

- 30-45 minutes in length
- Presented by community agency
- Help staff identify their own trauma and what trauma looks like in the classroom
- Strategies teachers can use to help students feel safe and comfortable

Touchpoints

- Community agency to offer weekly Zoom meetings (10-15 minutes)
- Provide information/strategies and allowing reflection
- Agency currently providing these services to Northfield Township First Responders

Employee Assistance Program

Operational Considerations

Operational Considerations

On Monday, June 22, 2020, the learning plan development team provided an update regarding completed efforts and the upcoming plans to address the following operational considerations:

- School Building Entry Procedures;
- Health Services;
- Learning Spaces;
- Common Spaces;
- Personnel;
- Students; and
- Facility Maintenance.

This evening, we will provide an in-depth review of several operational considerations that have been finalized.

Table 1
School Building Entry Procedures

According to the school district's most recent enrollment forecast¹, it is estimated that the school district will enroll 5,274 students, with 2,072 at Glenbrook North and 3,202 at Glenbrook South for the fall semester. Additionally, each school building has a large staff with several hundred full-time employees. Acknowledging the large number of individuals that are in each building on a daily basis, maintaining social distance, and implementing other safety measures will be challenging.

Completed Efforts	Next Steps as of June 18, 2020
<ul style="list-style-type: none">● Created a kiosk-based sign-in and sign-out system for students and staff (see pictures below). Upon entry, individuals are prompted to answer several health-related questions and to record body temperature. This will be implemented on July 1st for athletic camps and summer driver education programs.● School facility hours have been limited for staff during the summer months (e.g., 7:00 AM - 4:30 PM). Sign-in and sign-out procedures must be followed.● Face coverings are required upon entry and when in common areas for both students and staff (note: exceptions may be made for individuals with specific health conditions). Disposable coverings are available at the front entrance of all buildings; washable coverings or face shields for staff are being distributed as needed.	<ul style="list-style-type: none">● The health team is working to develop protocols for students or staff members that arrive on campus and are unable to successfully complete the health questionnaire.● We are in the process of designing signage to illustrate recent health guidance.● The dean's office team is considering changes to entry procedures for students when school resumes, including possible adjustments to the open lunch process.● The leadership teams at both schools are working together to discuss adjustments to the visitor procedure (e.g., who is allowed to visit the building and how they are signed into the building).

Excerpt from:
Learning Plan for the 2020-21 School Year - Operational Considerations

School Building Entry Procedures

Daily Health Questionnaire

Prior to arrival each school day, students and staff will complete a short health questionnaire through an online form. Based on the responses provided, users will be directed to go to school or stay home and contact the school nurse.

Upon arrival at school, students and staff will check-in by scanning their ID. This process documents the individual's arrival, and also validates that they successfully completed a health questionnaire. If the student or staff member did not complete the questionnaire, the paraprofessional will collect and document this information, and also perform a temperature check.

Individuals that report that they might need additional evaluation or medical assistance will be immediately directed to a satellite nurse's office for consultation. An email will also be automatically sent to the student's parents/guardians.

The image displays two screenshots of a mobile application used for daily health questionnaires. The top screenshot shows the main questionnaire interface for a user named Susan Gravel (ID 197000) on 7/10/2020. The questions are: "Have you experienced any of the following?", "1. Fever, Cough, Chills, and/or Muscle Aches?", "2. Sore Throat, Runny Nose, and/or Loss of Taste or Smell?", and "3. Nausea, Vomiting, and/or Diarrhea?". The bottom screenshot shows the "Check in Confirmed" screen, indicating that the user has successfully completed the questionnaire. It displays the user's name (Test Student), ID (77777), and grade (12). A green banner with a white checkmark and the text "Check in Confirmed Test Student 7/10/2020 2:15:27 PM" is overlaid on the screen. Below the banner, the question "6. Your temperature" is visible with a response of "99.4°".

School Building Entry Procedures

School Hours and Entrances

In general, the school building will be accessible from 6:45 AM - 4:00 PM. Throughout this time designated entrances will be staffed to facilitate the check-in process.

Students and staff will continue to enter through each school's regular entrances. Signage will remind students to remain socially distant during the check-in process, and to proceed immediately to their scheduled destination.

In an effort to decrease the number of students entering/exiting the school at one time, the leadership team is considering expanding late start/early release to all grade levels, and allowing students to not be present during SRT or study hall.

Until further notice, only essential visitors will be permitted to enter the school building during the school day.



Building Guidelines



Let's protect each other by wearing masks in all shared spaces



Maintain physical distance by keeping at least 6 feet apart



Wash your hands often using soap and water for 60 seconds



Keep the flow of traffic moving. Do not stop to talk or congregate in common spaces



Stay to the right and avoid passing others when possible



Please take the stairs if you are able in consideration of those who need the elevator

GLENBROOKSOUTH

School Building Entry Procedures

Face Coverings

Board Policy 5010 - Safety and Security provides that,
“Every reasonable precaution be taken to ensure the safety of students, and employees of, and visitors to the school district . . . [and to] maintain a safe and secure program, complying with . . . Illinois State Board of Education Rules” (Section A).

In accordance with the joint ISBE and IDPH guidance, face coverings will be required for all students, staff, and other individuals entering the school building. Accommodations will be made for individuals with disabilities with medical documentation from a provider.

Every student and staff member will be provided a reusable face covering, and will also have access to disposable masks upon entry to the school building. The bookstore will also be selling school-branded masks for those that are interested.

Students may wear their own face mask, but it must comply with CDC recommendations and not violate other school rules.



Common Areas

Bathrooms

The Buildings and Grounds team is actively inventorying the equipment and fixtures in each single and multi-person bathroom. The following changes have been recommended for implementation during the 2020-21 school year:

- All multi-person bathroom doors will be appropriately propped open throughout the school day;
- Automatic sink faucets and soap dispensers will be installed where they are not already present;
- Existing hand dryers will be deactivated, and paper towel dispensers will be installed;
- Urinals that are not separated with a divider will be blocked-off or a divider will be installed;
- Large waste baskets will be placed in each washroom to manage the paper towels;
- Signage to promote social distancing and proper hand washing will be installed;
- Bathrooms will be cleaned throughout the school day, in accordance with the district's cleaning protocol.



WASH YOUR HANDS



Common Areas

Cafeteria and Lunch Time

Should the school day include lunch service, each school will need to identify additional areas for students to eat that provide for:

- 6 feet of social distance;
- No more than 50 students in an area.

Assuming the school population is split in half, Glenbrook North will have a maximum of 400 students in each of its (3) lunch blocks, and Glenbrook South will have a maximum of 600 students. To accommodate this, Glenbrook North will need (2) spaces in addition to its cafeteria, and Glenbrook South will need (8) spaces. We have identified a sufficient number of spaces to accommodate lunch for 50% of the student population. This was accomplished by relocating a small number of classes that utilized large spaces to other available locations, and installing rented, all-season tents in designated courtyard areas.

Lunch service will also look different. Students will be encouraged to pre-order their lunch through an app, and all meals will be pre-packaged to support a grab-and-go service model. To support students that will not be eating in the cafeteria, a number of pop-up lunch stations will be established throughout the school building.

Additionally, in an effort to further decrease the number of students for lunch, the leadership team is considering expanding open lunch to all grade levels.

Contact Tracing

Protocol and Implications

In order to activate our contact tracing protocol, students will be assigned seats when they are in a scheduled class or at lunch. This means that:

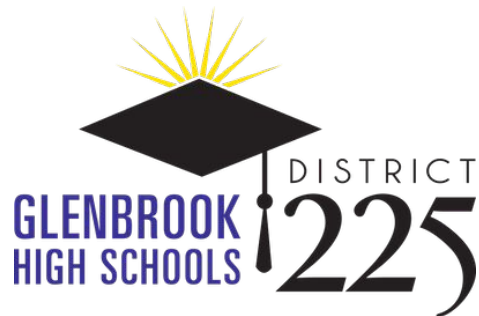
- Teachers will establish seating charts for each of their classes;
- Students will be assigned a specific location for their SRT, as well as an assigned seat;
- During the lunch period, students will be assigned a specific room where they will eat lunch, as well as an assigned seat.

By establishing seating charts, our Safety and Security team will be able to more efficiently identify and notify individuals that have been in close contact with a person that is infected with COVID-19 should a new case arise.

Aligned with contact tracing best practices, the school district will initiate contract tracing upon notification of a confirmed or probable case (as determined by a medical professional) of COVID-19. Once notification is made, the school district's Safety and Security Manager will conduct the necessary contract tracing interviews to determine those individuals that have been in close contact with the infected person.

All individuals that have been in close contact with the infected individual must be quarantined for 14 days after the last most recent contact with the infected person when the case was infectious. Individuals that have not been identified as being in close contact with the infected person will not be quarantined.

Every contact tracing event is unique and treated as such. Additionally, confidentiality of all parties involved is essential.



Learning Plan for 2020-21

Planning Status Update

July 13, 2020