

Progress Updates

Learning and Operational Plan for the 2020-21 School Year

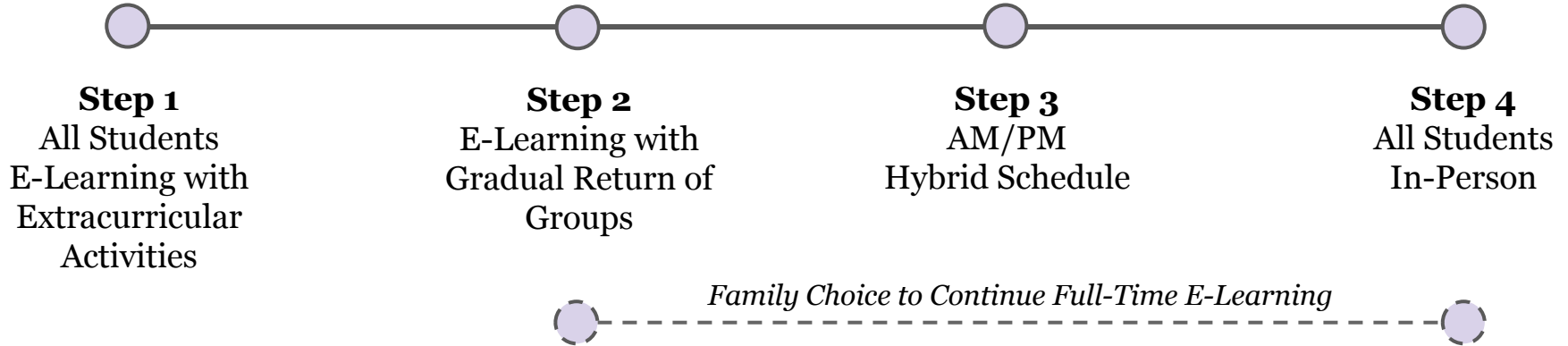
Monday, October 13, 2020

Our Guiding Principles

1. Maintain the health and safety of all students and staff;
2. Provide meaningful and engaging academic experiences for all students;
3. Address the social and emotional needs of all students;
4. Provide consistency and stability for all students and staff; and
5. Provide continuous professional learning opportunities for staff that address learning needs unique to this time.

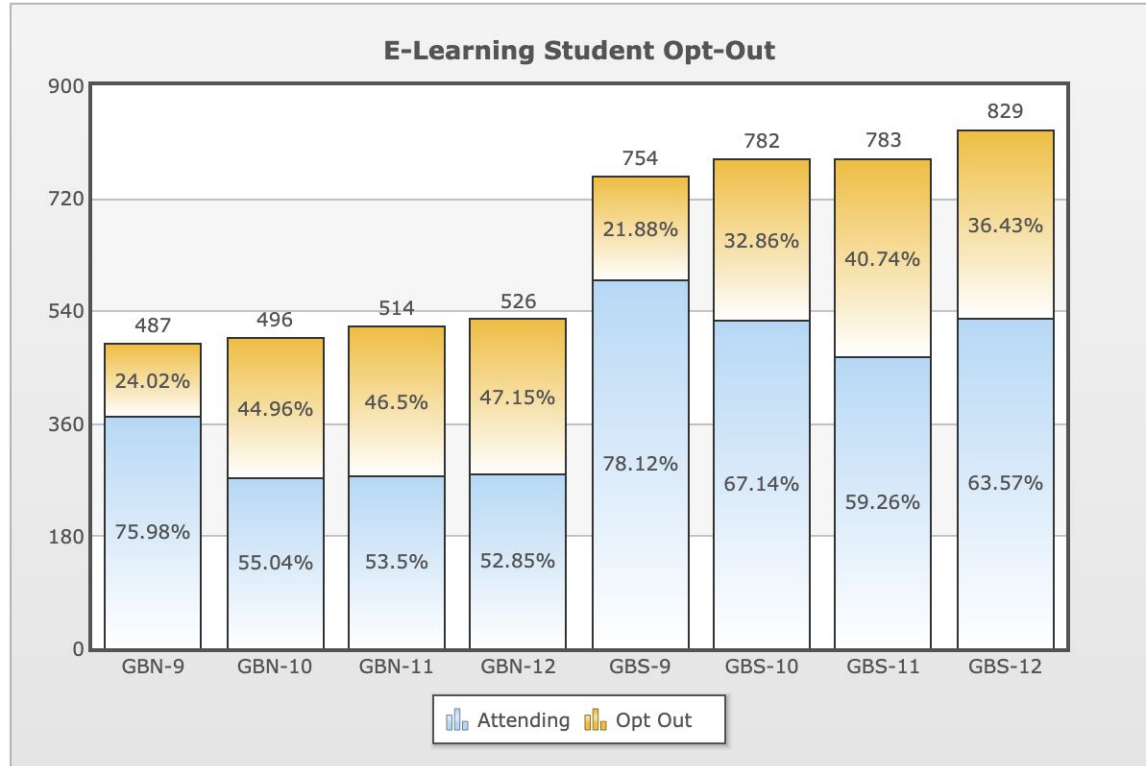
Learning Plan Continuum and Indicators

We are committed to providing live touchpoints every day for every student with every teacher in every class.



- Compliance with Cook County Department of Public Health Guidance
- Implemented Contact Tracing Protocol and Measures to Support Contact Tracing
- Implementation of 6 Foot Social Distancing Strategies
- Implemented Cleaning Protocol and Supplies
- Sufficient Inventory/Access to Required PPE
- Sufficient Staff to Provide Supervision (Including Substitute Availability)
- Pedagogical Considerations (Instructional Integrity and Stability for All)

Update on Transition to Step 3



Update on Transition to Step 3

Represents the total number of unique student/staff kiosk entries between Monday, October 5, 2020 and Monday, October 12, 2020. This includes school day and before/after activity entries.

	Glenbrook North	Glenbrook Off Campus	Glenbrook South
Grade 9	185	0	272
Grade 10	315	5	408
Grade 11	315	2	387
Grade 12	350	3	470
<i>Total Students</i>	1,165	10	1,537
Staff	323	18	382

Metrics

Health Metrics

Local, state, and federal health agency information, data, and guidance.

1. Average Weekly Cases Per 100,000
2. Test Positivity %
3. Increased Cases - Rolling 7 Day Average
4. Increased Youth Cases - Rolling 7 Day Average

Operations Metrics

The resources and preparations necessary to safely and effectively bring students back on campus for learning.

1. Sufficient Inventory / Access to Required PPE
2. Implementation of 6 Foot Radius for Learning Spaces
3. Personnel

Health Metric Definitions

Geographic Region	Description
IDPH Region 10 [Link]	All of Cook County excluding the City of Chicago
Cook County - North Health District [Link] - School Metrics	North Suburban Cook County
Glenbrook + Border Zip Codes [Link]	60025, 60026, 60062, 60015, 60016, 60022, 60029, 60035, 60053, 60056, 60070, 60077, 60089, 60090, 60091, 60093, 60714
Glenbrook [Link]	60025, 60026, 60062

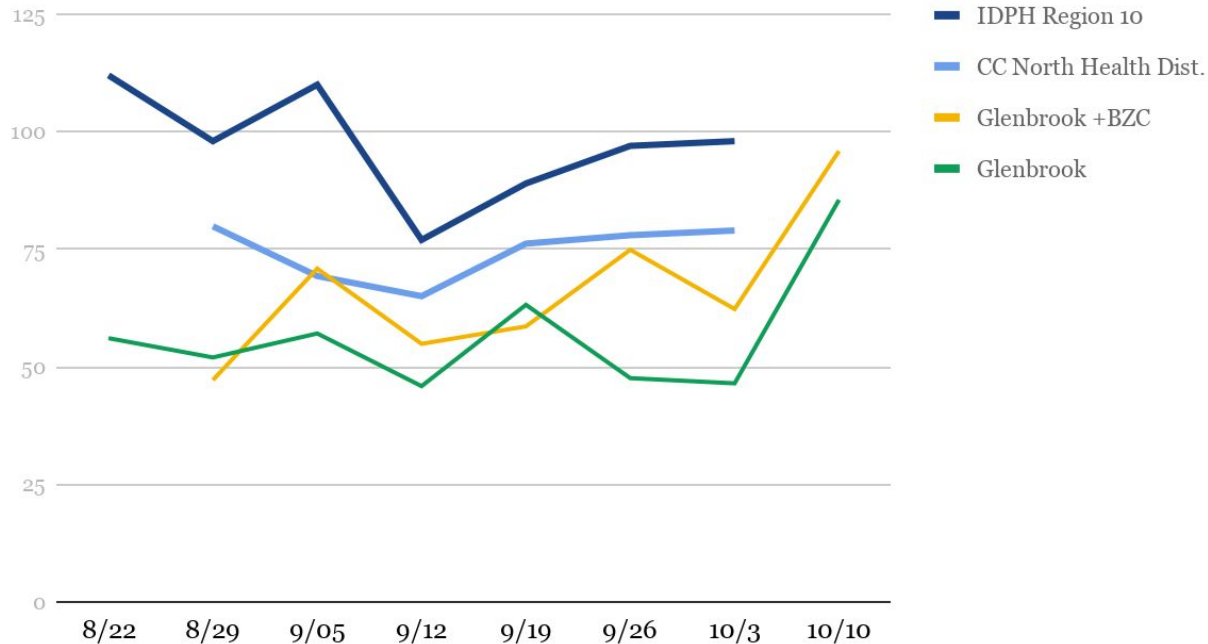
Health Metric 1: Average Weekly Cases Per 100,000

Learning Continuum Step Risk of COVID-19 Spread	Step 4	Step 3	Step 2	Step 1
	None	Minimal	Moderate	Substantial
Case Count	Less than 10	10 - 49	50 - 99	More than 100
IDPH Region 10*			98	
Cook County - North Health District*			79	
Glenbrook + Border Zip Codes			95.9	
Glenbrook Zip Codes			85.5	

* Data from October 3, 2020

Health Metric 1: Average Weekly Cases Per 100,000

Average Weekly Cases Per 100,000



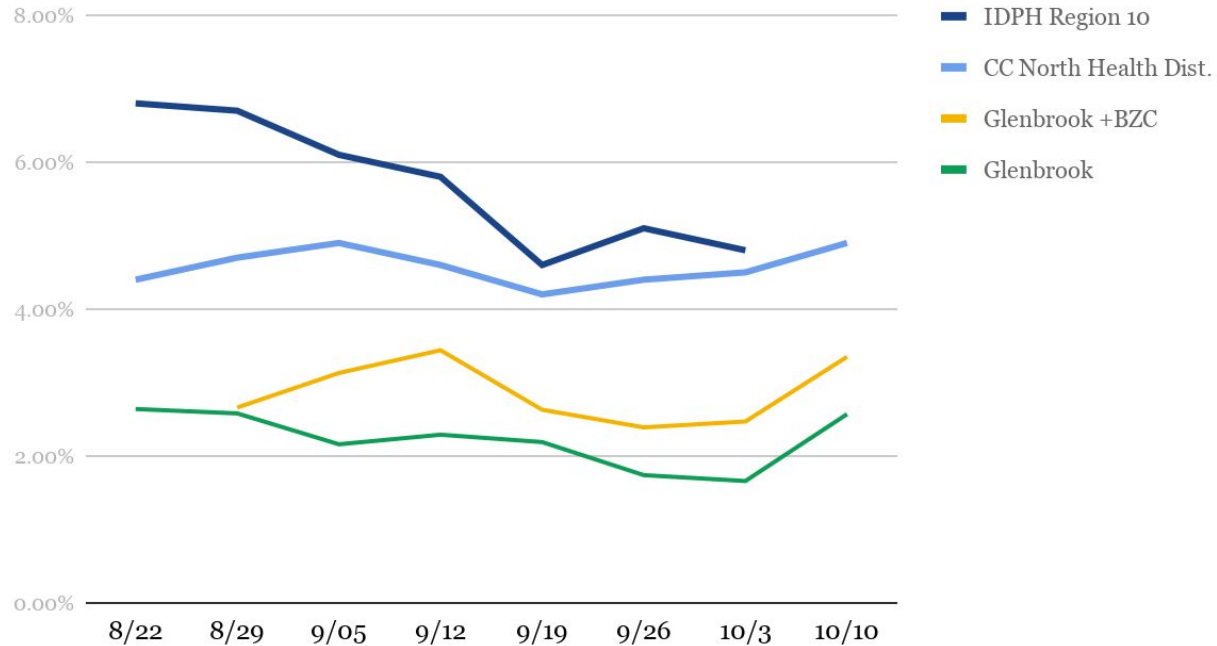
Health Metric 2: Test Positivity %

Learning Continuum Step Risk of COVID-19 Spread	Step 4	Step 3	Step 2	Step 1
	None	Minimal	Moderate	Substantial
Positivity Percentage	Less than 1%	Between 1% and 5%	Between 5% and 8%	Greater than 8%
IDPH Region 10*		4.8%		
Cook County - North Health District		4.9%		
Glenbrook + Border Zip Codes		3.35%		
Glenbrook Zip Codes		2.57%		

* Date from October 3, 2020

Health Metric 2: Test Positivity %

Test Positivity %



Health Metric 3: Increased Cases - Rolling 7 Day Average

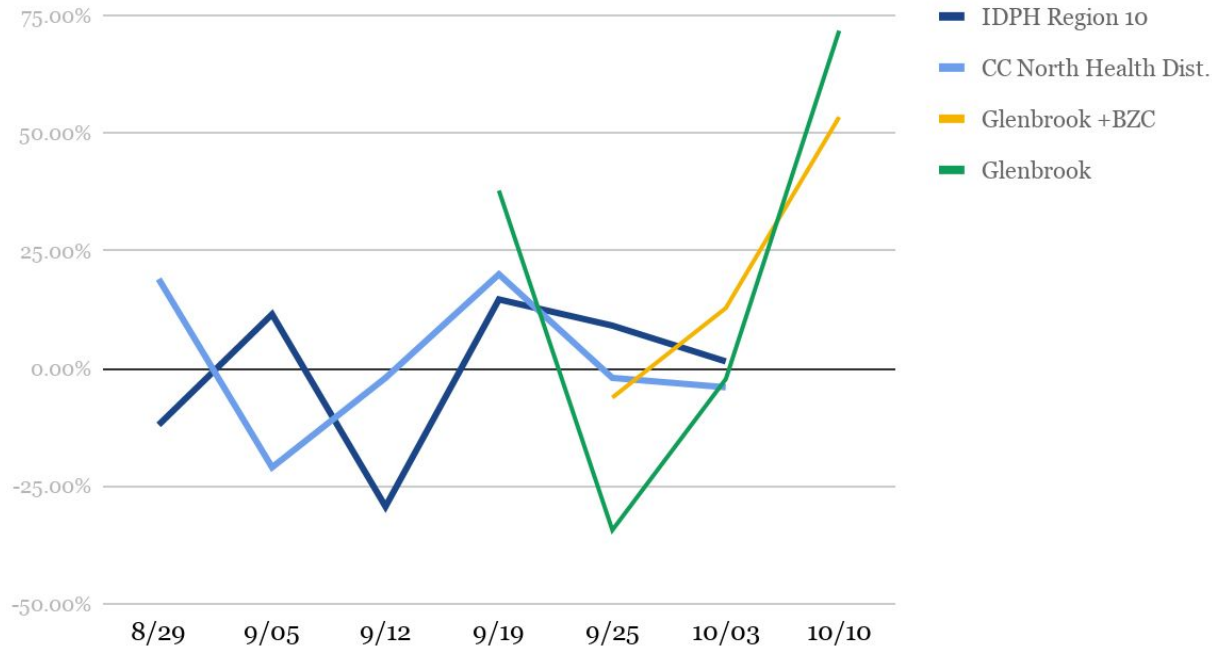
Learning Continuum Step Risk of COVID-19 Spread 7 Day Increased Cases Rate of Change	Step 4 None		Step 3 Minimal		Step 2 Moderate		Step 1 Substantial	
	Less than 5%		Between 5% and 10%		Between 10% and 20%		Greater than 20%	
IDPH Region 10*	1.5%							
Cook County - North Health District*	-4%	703						
Glenbrook + Border Zip Codes							53.40%	474
Glenbrook Zip Codes							71.74%	79

* Data from October 3, 2020

+Requires two weeks at this threshold to be regarded as being in a higher category

Health Metric 3: Increased Cases - Rolling 7 Day Average

Increased Cases - Rolling 7 Day Average



Health Metric 4: Increased Youth Cases - Rolling 7 Day Average

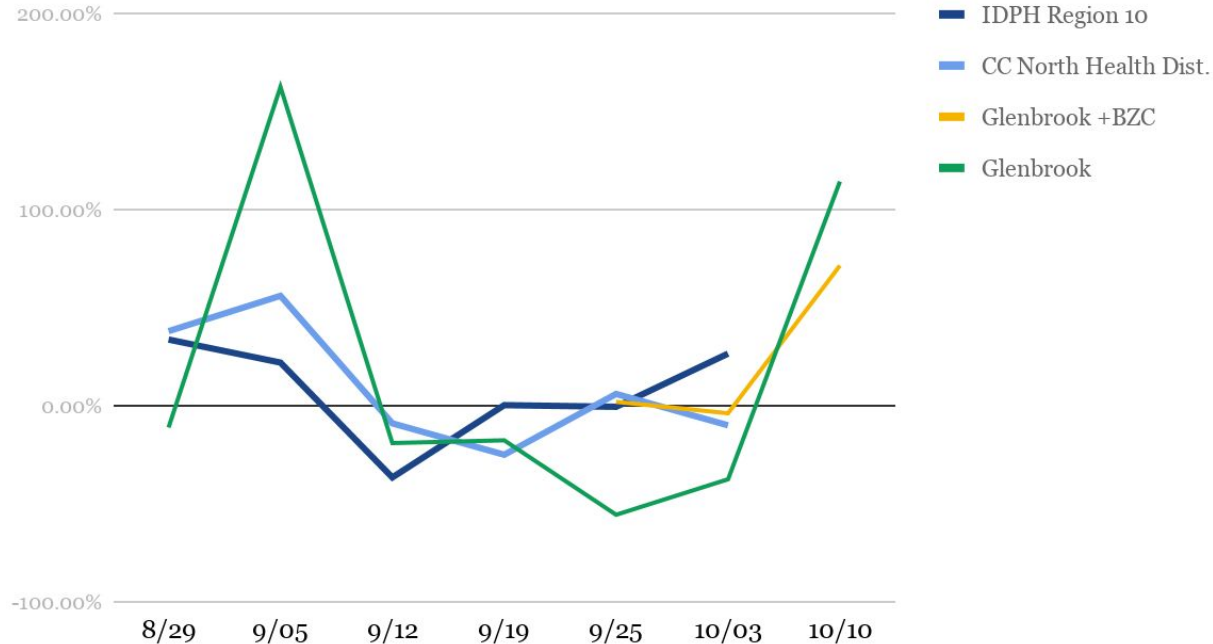
Learning Continuum Step Risk of COVID-19 Spread 7 Day Increased Youth Cases Rate of Change	Step 4 None		Step 3 Minimal		Step 2 Moderate		Step 1 Substantial	
	Less than 5%		Between 5% and 10%		Between 10% and 20%		Greater than 20%	
IDPH Region 10*							26.5	453
Cook County - North Health District*	-10%	114						
Glenbrook + Border Zip Codes							71.43%	84
Glenbrook Zip Codes							114.3%	15

* Data from October 3, 2020

+Requires two weeks at this threshold to be regarded as being in a higher category

Health Metric 4: Increased Youth Cases - Rolling 7 Day Average

Increased Youth Cases - Rolling 7 Day Average



Operations Metric 1: Sufficient Inventory / Access to Required PPE

Months or Weeks on Hand	Multiple Months	1 Month	2 Weeks	1 Week
Gloves	X			
Face Masks	X			
Clear Face Masks	X			
Face Shields with Glasses	X			
General Face Shields	X			
Isolation Gowns	X			
Disinfectant Wipes	X			
Hand Sanitizer	X			
Nurse-Specific PPE (e.g., N-95 Fitted)	X			

Operations Metric 2: Implementation of 6 Foot Radius for Learning Spaces

Sample Capacity Analysis

Term	School	Room	Sq. Ft.	6 Ft. Radius Cap.	Actual Soc/Dis Cap.	Scheduled	Block 1			
							50%	33%	25%	100%
S1	GBS	333	1390	52	14	Yes	13	8	7	23
S1	GBS	339	690	26	15	Yes	15	9	9	26
S1	GBS	340	1305	49	14	Yes	12	10	8	24
S1	GBS	341	1230	46	14	Yes	10	8	5	17
S1	GBS	344	1305	49	14	Yes	9	6	6	16
S1	GBS	345	1305	49	14	Yes	10	7	7	18
S1	GBS	348	1370	51	14	Yes	13	11	8	24
S1	GBS	349	1410	53	14	Yes	16	10	9	24
S1	GBS	360	1495	56	14	Yes	12	10	9	22
S1	GBS	362	1500	56	14	Yes	11	9	8	20

Operations Metric 2: Personnel

	Total Count
Certified Staff on Accommodation	220
Highest Number of Additional Staff Required Per Block at Schools to Supervise Classrooms	$52 \text{ (GBN)} + 80 \text{ (GBS)} + 3 \text{ (GBOC)} = 135$
Short-Term Instructional Assistants Confirmed (to Supervise Classroom while Teacher is Remote)	123

Childcare Opportunity

- The Glenview Park District and Wesley Child Care are offering a **Camp REC** program at Park Center (in the Glen) to support students in e-learning and hybrid programs.
- Students in Kindergarten through 8th Grade are placed in a pod of 10-15 students with two adult supervisors. The adults facilitate the student's e-learning and provide activities during breaks throughout the day.
- Standard pricing includes a 8-hour program costs \$400/week per child; an 11-hour program costs \$550/week per child. This cost includes lunch and snacks for participants.
- The Glenview Park District does have capacity, and is willing to work with the school district to customize a program to meet the needs of our staff.